

WEATHER			
	Min.	Max.	Precip.
Wednesday, May 5	45	67	0.06
Thursday, May 6	42	68	0.13
Friday, May 7	48	70	0.00
Saturday, May 8	41	73	0.00
Sunday, May 9	42	71	0.00
Monday, May 10	38	75	0.00
Tuesday, May 11	46	76	Trace

ONE HUNDRED-FIRST YEAR—No. 47

14 Pages This Week

CHELSEA, MICHIGAN, THURSDAY, MAY 13, 1971

15c per copy

SUBSCRIPTION: \$4.00 PER YEAR

The Chelsea Standard

QUOTE

"When duty whispers low 'thou must,' the youth replies 'I can!'"
—Ralph Waldo Emerson
1803-1887



MRS. CLARENCE FELDKAMP

AFTER 46 YEARS:

Mrs. Clarence Feldkamp Retiring from Teaching

Open House will be held Sunday, May 16, from 2 until 5 p.m. at the Pleasant Lake school in honor of Mrs. Clarence Feldkamp, who is retiring at the end of this year following 46 years of teaching in local schools. Sponsored by the Pleasant Lake PTO, the event is open to all friends and former students of Mrs. Feldkamp who would like to wish her well in her new life.

Mrs. Feldkamp has lived in Washtenaw county since she was eight years old. During her high school years, the family moved to 6370 Chelsea-Manchester Rd. She was graduated from Chelsea High school, and attended Eastern Michigan University in 1924. That same year she began teaching at Beach school, on Chelsea-Dexter Rd. Following one year, she changed schools, and taught at St. Thomas school on Ellsworth Rd. for three years.

In 1928, Mrs. Feldkamp began teaching at the Dresselhouse school on Pleasant Lake Rd., where she taught for two years. She then took a year off and went back

to school at Eastern Michigan University to study, and to student teaching.

Mrs. Feldkamp then taught at Knight school on Scio Church Rd., for 24 years, following her return to the classroom in 1931.

In 1955 she was building principal and kindergarten teacher at the Pleasant Lake school, where she has taught since that time. Presently, Mrs. Feldkamp is teaching first graders.

Winter home of Mrs. Feldkamp is on Fletcher Rd., although she and her husband spend their summers at Feldkamp's Landing at Clear Lake. Mrs. Feldkamp says she and her husband plan to travel in their retirement.

Beach School Plans Art Fair May 24-25

Beach school will have an Art Fair May 24 and 25 from 8 until 9 p.m. There will be art work from the 6th, 7th, and 8th graders at the school on display, outdoors at the main entrance. There is no admission fee.

Mysterious Grass Fires Break Out

A rash of grass fires which occurred Saturday, May 8 in the area kept firemen busy. Chelsea fire officials suspect many of the fires were set by someone playing "cat and mouse" with them.

Fire calls started Saturday afternoon, at 12:45, when grass was reported on fire at the corner of Garvey Rd. and Cavanaugh Lake Rd. Owner of the land is unknown, although Chief Gaken said he believed it was part of an estate.

Fifteen minutes later, at 1 p.m., state-owned land at the corner of Waterloo Rd. and M-52 was reported ablaze.

Next call came at 2:55 p.m., when state-owned land on Joslin Lake Rd. was on fire. Five minutes later land owned by the state at the corner of M-52 and Green Lake Rd. was reported burning.

Seven minutes later, at 3:07 firemen were summoned back to the corner of Waterloo Rd. and M-52 to extinguish flames on the same state-owned land. And, at 3:20 they were recalled to the corner of Garvey Rd. and Cavanaugh Lake Rd., for the same reason.

All was quiet until 11:18 that evening, when grass on property belonging to Fabius Nadeau on Old US-12 was reported on fire. Later, at 12:25 a.m., last call of the day came, (or first for Sunday!) for a grass fire at the end of Monroe St. Owner of the land was unknown, Chief Gaken reported.

Chelsea fire officials are investigating the string of fires, although at present they have no "prime suspects."

Sunday, at 8 p.m. a car belonging to Betty Otto of Ann Arbor was reported on fire, and firemen had to extinguish that blaze. Only small damage to the car was reported.

At 8:20 p.m. state land on the west side of Loveland Rd. was on fire, and Chelsea fire officials were called to the scene.

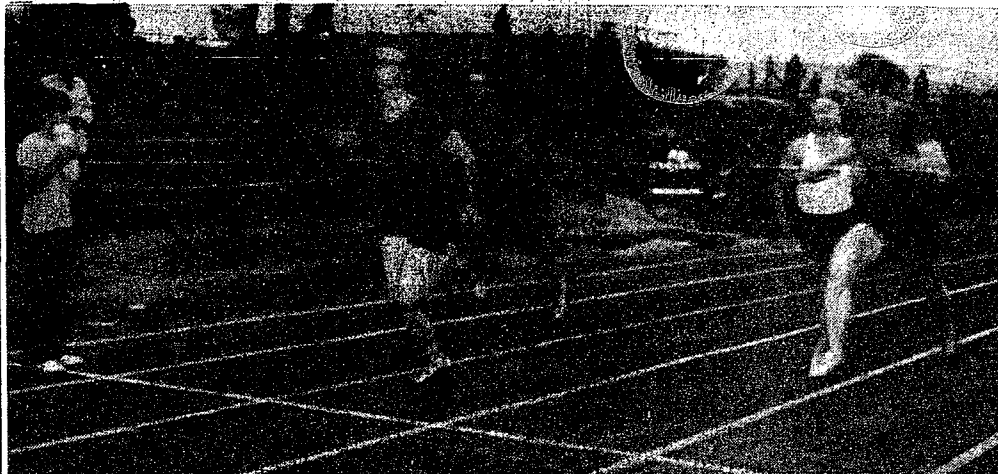
Tuesday afternoon, a grass fire was reported on Freer Rd., on land owned by Dr. Palmer and Leigh Palmer. The fire was caused by children playing with matches.

C. Bycraft Hospitalized

Charles Bycraft is in Chelsea Community Hospital, room 149.



KIM ARONSON came in first in the 440-yard dash Tuesday in a record setting time of :50.9. coming Thursday, May 20, at the Conference Meet in South Lyon.



BULLDOGS' SWEEP 100: Chelsea runners closely by Bob Salyer, and Mark Collins, who was came in one, two and three in the 100-yard dash. third. Winning time was :10.5. Hughes, left, was first in the event, followed

Trackmen Down Dexter In Title Race

Chelsea trackmen soundly trounced Dexter Tuesday afternoon, May 11 at home track by the score of 72-46. This win gave the Bulldogs an over-all 8-0 record for dual meets, and a 7-0 record in the conference, giving Chelsea the number one spot on the first half of the Conference Championship. Over-all Championship winner will be decided Thursday, May 20 at the Conference Meet held at South Lyon. Dual meet standings count toward half of the conference title. Second half is decided at the Conference meet.

First-place winners from Chelsea are Randy Seitz, who took top honors in the shot put, with a toss of 48' 6 1/2". Tim Lancaster was first in the pole vaulting event in 11' 13".

880 relay team of Larry Gorton, Mark Collins, Kim Aronson, and Jeff Hughes took first place in that event. George Cameron was first in the 880-yard run.

Dave Buxton was first in the mile run, with a fast time of 4:38.1.

Kim Aronson set a record in the 440-yard dash which he ran in :50.9.

Jeff Hughes took first in the 220-yard dash in :23.2.

Mile relay runners were also first, in 3:40.4. Runners on that team were Mark Collins, Dan Hooper, Dave Buxton, and Kim Aronson.

Dexter's Tom Snyder won three events, long jump, high hurdles, and low hurdles. He also placed second in the 220-yard dash.

This coming Saturday, Chelsea will travel once again to Michigan Center to take part in the Regional meet. Sixteen teams are entered in this particular region. Jackson Lumen Christi and Chelsea are favored to battle it out. First three qualifiers in each event qualify for the state meet, which will also be held at Michigan Center on Saturday, May 22.

Band-A-Rama Slated Tonight

Chelsea High school bands and choirs will present "Sound-A-Rama II" May 13, tonight, at 8 p.m. in the high school auditorium. The show, which is to be emceed by Keith Pfeifle and Laurie Lancaster will be in vaudeville style. Performing groups will include the stage band, Madrigals, Mixed Choir, glee club, and the bands.

Further entertainment will be provided by the Rebelettes, the Dixieland band, and the vipers.

Postal Rate Hike Effective Sunday

Penny postcards will no longer cost a nickel to mail, after this week. In an effort to attain self sufficiency as required by the Postal Reorganization Act, the U. S. Postal Service will increase most postage rates effective May 16.

New rates will increase the cost to mail a letter from six to eight cents, while airmail letter rates will climb from 10 to 11 cents an ounce to post, and airmail postcards will cost 9 cents. Second and third-class mail rates, plus some fourth-class rates, will jump from 10 percent to 20 percent. Special delivery and registered mail costs will also go up. The price of a "penny" postcard will be six cents.

The boost comes under what the U. S. Postal Service claims is its authority to make temporary increases in postal rates, pending a recommendation by the Postal Rate Commission.

General postage rates have not been increased since 1967, when Congress passed their final legislative act in this respect. Earlier, requests for rate increases were proposed to Congress in 1969 by both President Johnson and President Nixon. In addition, President Nixon proposed an increase again in 1970, although none of the proposed increases were acted upon by Congress.

The Postal Service officials claim that the new increases are

authorized on a temporary basis until the newly-created Postal Rate Commission can make recommendations to the governors of the Postal Service on permanent changes. It was announced in February that the Postal Service intended to make the temporary increases if the Postal Rate Commission did not make the recommended decision within 90 days of their request.

The Rate Commission recently confirmed that it will not be able to make a decision within the 90 days, and Sunday, May 16 was selected as the date on which the rates would become effective.

The action was challenged by a group of mail users, led by magazine and newspaper publishers, who sought to halt the increases until the rate commission has time to act. A U. S. District Court judge denied this request.

Hearings by the commission are scheduled to begin Monday, May 17 on a permanent \$1.45-billion-a-year revenue proposal.

The increases in postage rates will be borne more by businesses than individuals, Postal Service officials point out, since about 75 percent of first class and airmail is from commercial mailers.

When the domestic changes go into effect, there will be conforming increases in letter rates to Canada and Mexico.

Plans Complete For Observing Michigan Week

Annual 'Brag Week' Activities Start Saturday with Clean-Up Campaign

Michigan Week, the annual reminder to Michiganders of the values, and values that abound within the boundaries of their home state, will be celebrated May 15 through 22 across the state.

Chelsea chairman of Michigan Week is Louis Schneider, patrolman on the Chelsea Police Department.

Activities for Chelsea's celebration of the week-long event will begin Saturday, May 15, which has been dubbed "Community Pride Day." Under the leadership of Schneider, boys in Boy Scout Troops 420, 476, 425, and Cub Scout Pack 455 will participate in a massive community clean-up campaign. Cubs and Boy Scouts will work to clean the town's alleys, parking lots, and streets free from litter, and other refuse. Lunch will be served the eager ecologists at 11:30 a.m.

Sunday, May 16 is called "Spiritual Foundations Day." Activities for that day are under the direction of the Rev. Fr. C. Walton Fitch, vicar of St. Barnabas Episcopal church. All local churches will emphasize the role of the church across the state.

Biggest day on the Michigan Week calendar is Monday, May 17, "Our Government Days." Characterized by the traditional exchange of mayors with a neighboring city, Monday will be a busy, exciting whirlwind of events. Richard Slayton, mayor of Howell, will be visiting mayor for the day. He will be accompanied by his wife, and Mr. Scofield, president of the Howell Chamber of Commerce. The visiting dignitaries will meet with Chelsea Village President A. E. Fuchs at 8:15 a.m. at the Korman House, as guests of the Chelsea Senior Citizens. Following a breakfast of coffee and donuts, the officials will be paraded through town in a gala parade at approximately 9 a.m. with the Chelsea High school band and the village police department in accompaniment.

Tours of the Medical Clinic, and the Chelsea Community Hospital, Chelsea Milling, Chrysler Proving Grounds, and other points of interest within the community will be given him. A Michigan Flag in honor of the celebration will be raised, along with an American Flag, a gift from the guest mayor.

Heritage Day, which is Tuesday, May 18, will be a day when according to Chairman Schneider, "each citizen should give thoughtful appraisal to the resources, traditions, cultures, and skills that made Michigan great." No particular activities have been planned for this day.

Wednesday, May 19, "Our Livelihood Day," is a day when the ways by which Michiganders earn their living are celebrated. Products made in Michigan or by its residents are celebrated on this day, which will find local expression in a huge display. Starting at 1:30 p.m., local citizens will be treated to a display of antique and modern day automobiles.

which may be viewed in the parking lot between Merkel's Store, and the McKune Memorial Library.

Boy Scout Troop 420 will also have a display on that day, and local industries have planned to display their products.

"Education Day" is Thursday, May 20. Chairman for the day is Doug Robeson of the Chelsea Jaycees. Robeson's program will celebrate the entire educational system of the state and community, citing the present facilities and future needs.

Friday, May 21 is marked "Hospitality Day," whose motto is "Michigan, Land of Hospitality." Chairman Schneider commented that on this day, each person should try to do his part to make Michigan the "friendliest place on earth."

Art Steinaway of the Chelsea Jaycees will be chairman for Saturday's activities commemorating "Our Youth Day." Theme for this day's celebration deals with the future of the community, which rests on the shoulders of its youth. Youths and youth groups doing outstanding service to the community will be cited on this day.

When asked "Why Michigan Week?" Schneider claimed that this annual celebration is designed to promote Michigan at home, to the nation, and the world, and to steadily improve Michigan through the co-operation of its citizens.

Objectives of the celebration were adopted by the Board of Governors of the Greater Michigan Foundation, the educational foundation through which all the people of the state sponsor Michigan Week. They are:

—To give Michigan citizens greater knowledge and appreciation of their state;

—To expound the state's assets and resources for industry, business, education and recreation, and to afford the nation and the world an inspired view of Michigan's advantages;

—To foster a spirit of co-operation (Continued on page three)

Golf Team Wins Title

Bulldog golf team finished first in dual meet competition in the Southeastern Conference with a record of 12-4-1. Winning three matches in the past week helped decide the standings. The team defeated Novi on Thursday, 175-202. Jim Wojcicki, Mark Policht, and Don Konklm, each shot scores of 42, while Dave and Mike Powers each shot 49.

Monday, at Milan, Chelsea won a double dual from Milan and South Lyon. The Bulldogs had 159, Milan 176, and South Lyon 182.

Dave Powers was medalist with a score of 37, Don Konklm had 39, Glen Musolf, 41, and Mark Policht 42.



NO. 1 CHAPTER AWARD: Walter Brown, State Records and Recognition chairman and a member of the Chelsea Jaycees, presented Art Steinaway, chairman of the Chelsea Jaycees, with the Henry Giessenbier Memorial Trophy for the most outstanding chapter in the state. Chelsea Jaycees have won this event two years in succession.

Jaycees, Auxiliary Both Rate Among Top Chapters in State

Members of the Chelsea Jaycees and the Jaycee Auxiliary were honored as the best chapters in the state in their population classification at the 46th annual Michigan Jaycee state Convention held this past week-end in Grand Rapids.

For the second year in succession, local Jaycees received the Henry Giessenbier Memorial Award, the highest award that a local chapter can receive. The award is based on the chapter's over-all programming for the year. Chelsea Jaycees also received four first-place awards, one second place, and two third-place honors, out of the eight project activities entered in the State Records and Recognition program. Books were entered which covered all activities completed by the chapter.

They were judged by members of the Ohio Jaycees at the year-end judging.

First-place awards were received in the areas of chapter management and individual development, public relations, youth assistance and community involvement.

Second-place awards were received in the area of inter-club relations and third-place honors were taken in ways and means, and international involvement.

Newly-elected Michigan Jaycee president is Pat Sheridan, of Detroit. Internal vice-president is Don Waddell of Huntington Woods, and external vice-president is Bill Dyke of Wyoming. Jayceettes were also cited for outstanding achievement in the

past year by receiving the first-place award in their population division. This award is based on the Auxiliary's over all program during the past year, with emphasis on Jaycee assistance projects, community service and money-making projects.

Michigan Jaycee Auxiliary president, Mrs. Art (Anne) Steinaway recognized her own local president, Mrs. Robert (Barb) Updegraff, by presenting the award to her. She also presented Mrs. Updegraff with a single long-stemmed rose as a token of appreciation.

A second local Auxiliary member singled out for recognition for service and assistance to the state president was Mrs. Mike (Judy) Eubanks, who was awarded

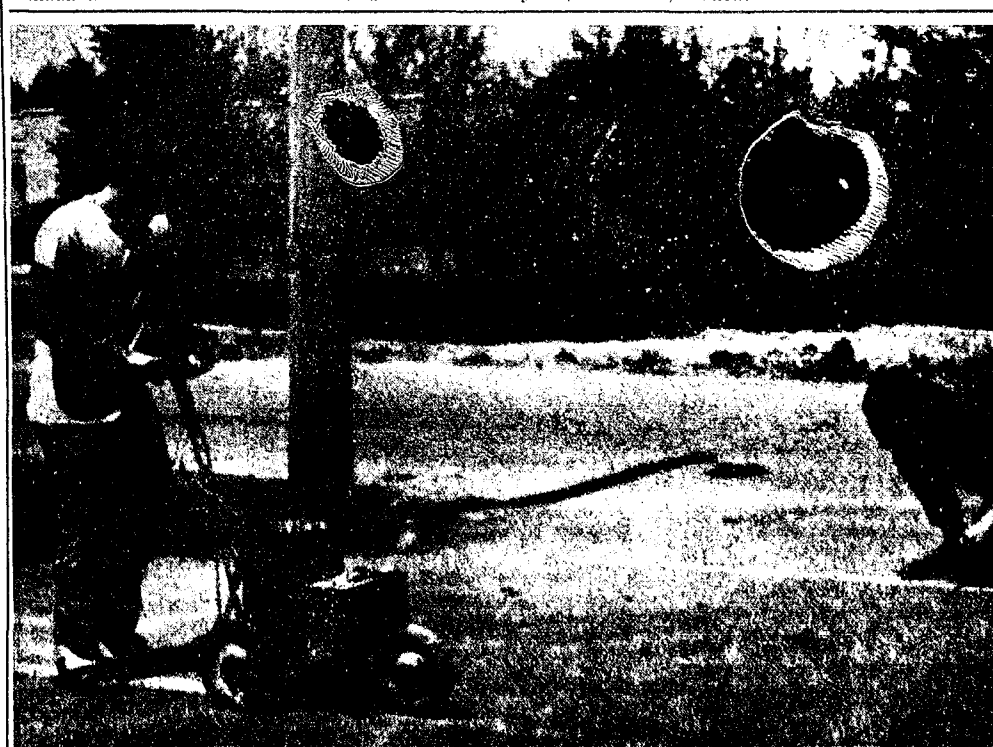
(Continued on page five)

Kindergarten Enrollment Set Tuesday

Parents of children who will be five years old on or before Dec. 31, 1971, who will enter school for the first time in September, 1971 will enroll their children at North school, Tuesday, May 18. Registration which has in the past been held at South school, will be held at 2 p.m. at North school. Mothers must present a birth certificate, in compliance with state law, and have their children counted as future students.

A short period for comments from the administrative staff, kindergarten teachers, speech correctionist, and school nurse will begin at 2:30 p.m. Coffee and refreshments will be served following the talks.

Parents not able to attend the meeting of May 18 are urged to call the school offices on or before May 18, or shortly thereafter. Children may be registered by phone, although a birth certificate must be presented to school officials. (Continued on page two)



JEFF BUST, left, makes his mark for Chelsea High school as he paints a stripe marking parking spaces in the high school parking lot. In the background, Ron Landwehr measures a previously painted stripe. The boys are members of the Kiwanis sponsored Key Club at Chelsea High School.

Tracksters Fall Short, 37-35, in Cardinal Relays

Bulldog tracksters came up a little short Saturday evening in the Cardinal Relays held at Michigan Center, as they finished second behind Lumen Christi, 37-35. Sixteen teams took part in the relay, which featured relays in all events, including field events.

In the field events, three men were entered, and the best throws or jumps of each were used to determine the outcome.

Chelsea's 35 points, gained the team the runner-up trophy, but the relay lead which the team built up was not enough to withstand the late surge of Lumen Christi.

Final scores were: Lumen Christi, 37; Chelsea, 35; Northville, 28; followed by Holt, Mason, Haslett, and the rest of the field.

Chelsea had built up an early lead by finishing second in the long jump relay, and fifth in the high jump during the afternoon festivities. The long jump team of Mank Collins, Jeff Hughes, and Bruce Guster had a combined distance of 57' 2", and the high jump relay of Roger Fitch, David Porath, and Jon Lantis jumped 16' 2".

After the first four running events in the evening, it looked like Chelsea would clean up, as

the shuttle hurdle team of Mark Collins, Mitchell Heard, Jeff Hughes, and Larry Gorton won in 41.3, the 440-yard relay of Mark Collins, Bob Salter, Kim Aronson, and Jeff Hughes won in 45.3, and the two mile relay team of George Cameron, Tom McKernan, Dan Hoover, and Dave Buxton won in 8:32.1.

Lumen Christi, however, came on strong in the last four events, to gain the meet. Chelsea's heavily favored 880 relay team had a bad exchange in the next to the last event, and finished third behind Lumen Christi, which, according to Coach Bert Kruse marked the turning point in the meet.

Lumen Christi finally clinched the meet by winning the pole vault relay, an event that took more than seven hours to finish. Chelsea's pole vaulting team of Tim Lancaster, Dan Hoover, and Bruce Guster finished second with a total of 31' 6".

Other placing teams were the Spring Medley team of Mitchell Heard, Kim Aronson, Bob Salter, and Larry Gorton, who finished fourth in 2:33.5, and a third-place finish by the mile relay team of George Cameron, Dan Hoover, Dave Buxton, and Larry Gorton in 3:34.8.

House By the Side of the Road Expanding Its Services

"Let me live in the house by the side of the road and be a friend to man," is a line from the poem which a unique poverty alleviation program, "The House by the Side of the Road" operates. Located in one of the buildings on the former Holy Ghost Seminary, on Washtenaw Rd., which was purchased by the county, the "House," provides used clothing for members of the economically disadvantaged classes.

The project, which had used of their facilities rent-free from the county, is not sponsored by the county, or the Council of Churches, or the Church Women United. It is primarily operated by individual women who volunteer their time and resources to collect, wash and mend, label, and distribute to

needy families, good used clothing. Chelsea's Church Women United has recently been quite active in supporting this operation, which was originally started by two Ann Arbor women, Mrs. Raymond Crabtree, and Mrs. Sigismund Binowski.

Chelsea women have sponsored several clothing drives to collect clothing for the "House," which they have then mended, labeled, and washed, when necessary, to take to Ann Arbor for distribution.

Clothing is distributed on the "referral system." Referrals are made by organizations such as the Department of Social Services, the County Health Department, Crisis Walk-In Clinic, hospital, police, churches, and other sources. Originally started as an extension of two small church operated clothing distribution centers, "The House by the Side of the Road" has expanded tremendously since its inception. Presently, the House plans to expand their facilities by adding a room at the rear of the building to be used for storage, washing, ironing, and mending of clothes that are constantly pouring in. The sum of \$20,000 has been allocated by the County Board of Commissioners for the purpose of building this addition.

In a recent report concerning the operation of the "House," it was noted that about 30,000 garments were given to the needy in the first three months of the "House's" operation, following their opening last July. In a report to the County Board of Commissioners Mrs. Crabtree claimed that 29,390 garments were distributed in that time, and 2,785 articles of hardware and household appliances were given out. A total of 63 laundries, with 65 to 80 items, each, were provided to the needy also.

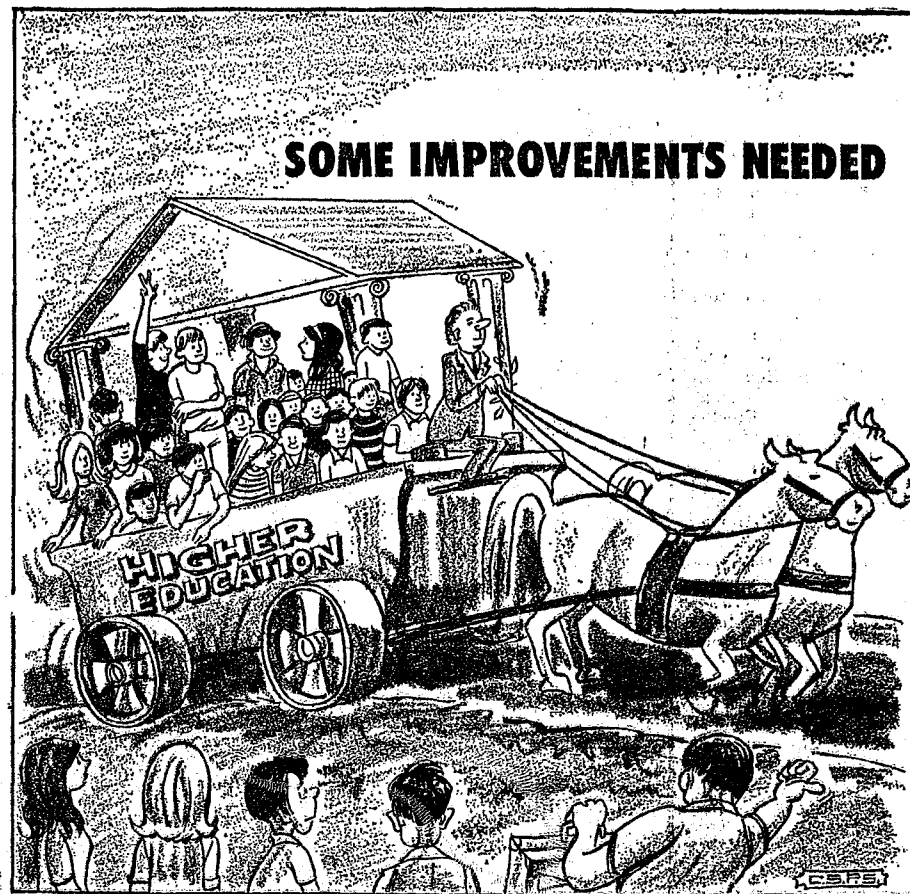
Kindergarten Day

(Continued from page one)

icals on or before the first day of school in September. Phone numbers to call for registration are: North school, 475-2577, or South school, 475-2913.

Prior to school's opening in September, an entering student must have a doctor's statement verifying that the child has been immunized against diphtheria, tetanus, whooping cough, smallpox, and polio, and has had a TB test. Forms for the immunization are available at registration.

Robert Benedict, principal of North school, urged that parents be on hand on May 18 to take the first all important step in assuring their child's education. For the best education of all of next year's kindergartners it is important for school officials to know how many eager little ones to expect in September. The earlier the children are counted, the better the schools may plan to provide for their education.



SOME IMPROVEMENTS NEEDED

★ MICHIGAN MIRROR ★

By Elmer E. White, Secretary, Michigan Press Association

Easier Divorce

A marriage on the rocks is difficult for everyone, and a group of lawmakers are trying to make it easier for some of those involved. They are proposing changes in the law which would permit a great simplification in the divorce granting process. This would make divorces available to those who cannot afford legal fees; make the divorce less painful for all; help free up court dockets which are clogged with divorce proceedings.

The lawmakers, whose numbers include House Judiciary Chairman Robert Traxler, D-Bay City; want to change Michigan's 120-year-old divorce statute to give the state a "no-fault" approach to divorce. The dramatic proposal already has been adopted in differing forms by the states of Iowa, Texas and California.

Under the proposed law the tests for dissolving a marriage would be the contention that "the legitimate objects of matrimony" had been destroyed in the relationship of the couple and that no "reasonable likelihood" exists that a reconciliation could be made.

Current law requires a Michigan resident filing for divorce to prove that the marriage partner was guilty of mental cruelty, adultery, drunkenness, criminality resulting in imprisonment, or mental incompetency.

The way it is now, our divorce law presumes that one party must be completely snow-white clean and the other guilty of marital wrongdoing," Traxler said. "That defies nature. That one party should be found totally innocent and the other totally responsible is absurd."

"And yet," he adds, "many people don't understand this, if the court finds that both husband and wife contributed to the marital breakdown, the court is powerless to grant a divorce."

The current setup does more than any other factor to clog the state's court dockets and help produce the backlog of cases which plague Michigan's judicial system. For example, of the 105,213 civil and criminal cases filed in Michigan circuit courts last year, nearly 45 percent—46,954 to be exact—were divorce actions. The year before 45,849 of 98,129 suits nearly 47 percent were for divorce.

But that isn't the reason it has had such a receptive audience among some lawmakers.

"When two people who are married grow to hate each other, it's tough enough on them without making them live with each other," said one.

Effort To Update
Unenforceable and outdated laws make for hypocrisy in government. There is a growing effort

to get some of these off the books so that people today are not under pressure from laws passed years ago. Laws about smoking are in this category.

State Rep. Bert C. Brennan thinks the state ought to repeal the laws which bar smoking of plain old cigarettes by persons under 21.

"If the law were followed strictly, every pre-21 smoker would be subject to misdemeanor penalties including a fine or up to five days in the county jail," Brennan says. "Persons who sell or give cigarettes to those under 21 would face a fine or imprisonment of up to 30 days. Persons who 'harbor' youngsters for the purposes of 'indulging' would face the same penalties as the sellers and givers of cigarettes."

Brennan, who does not smoke, thinks the question of whether smoking is harmful to a person doesn't really enter into the picture.

"I'm not trying to encourage the use of cigarettes by anyone, young or old," he says. "I personally accept the medical evidence that smoking is harmful. But I do want to rid our law books of irrelevant, archaic and meaningless acts, and this cigarette law certainly qualifies."

"One of the most nonsensical provisions of the law prohibits 'harboring' of minors for the purpose of indulging in the use of cigarettes," he says. "This may have seemed very righteous back in 1915 when the cigarette law was passed, but in my opinion it just seems ridiculous in light of present conditions and enforcement practices."

The two laws he wants to repeal were enacted in 1915 and 1889.

Minorities Gain Jobs

The State Highway Commission says a program spearheaded by the federal government has increased the number of minority group employees working on federal aid highway projects in Michigan more than 60 percent in just two years.

In 1969, it says, 510 of the 3,853 workers on such projects in Michigan belonged to minority groups, while in 1970 the number has jumped to 809 of 4,393 workers.

The commission says the main impetus for the increase was establishment two years ago of a department program to make sure all federal hiring standards were complied with in Michigan.

The commission's urban pro-

JUST REMINISCING

Items Taken from the Files of The Chelsea Standard

4 Years Ago...

Thursday, May 18, 1967—

Mike Funderburgh, son of Mr. and Mrs. Richard Funderburgh, will be featured trumpet solo at the Chelsea High school band "Sousa Memorial Concert," to be held Sunday, at 2:30 p.m. Mike will play the solo in Clifton Williams' "Dramatic Essay."

Mr. and Mrs. John A. Miller of 17370 Cassidy Rd., attended the 19th annual Honors Convocation in Pease Auditorium at Eastern Michigan University Thursday evening, May 11, as their daughter, Judy Miller, received recognition for scholastic achievement. Miss Miller, a senior, maintains a 4.0 grade point average at the university.

Jill Lantis, 15, daughter of Mr. and Mrs. Edwin Lantis, took first place in the senior division of the sports-wear category at the 4-H sponsored "County Fair of Yesteryear of Greenfield Village," which is an annual event sponsored by the Wayne county 4-H clubs. In the senior division of the best-wear category, a third place was taken by Charlene Powers, 16, daughter of Mr. and Mrs. H. Charles Powers.

The largest class in the history of St. Paul United Church of Christ was confirmed Sunday, with 23 confirmands, Jeff Parsons, Darrell Passow, Jim Bauer, Neil Rothfuss, Jill Plintoff, Laurel Lancaster, Dorothy Gauss, Gayle Winans, Wendy Weston, Anita Martin, Susan Blass, Jill Kipf, LuAnn Strieter, Janice Guenther, Linda Hale, Patrice Stofor, Robert Pickell, Marilyn Welshans, Joan Schmidt, Jack Wellnitz, Jeff Bust, David Heydlauff, and Richard Pichea.

14 Years Ago...

Thursday, May 16, 1957—

Sandra Buehler, a junior at Chelsea High school, has been chosen to attend Wolverine Girl's State at Ann Arbor next month as the representative of Herbert J. McKane Unit No. 31 of the American Legion Auxiliary. Miss Buehler is the daughter of Mr. and Mrs. Leroy Buehler of Elm St., and her father is a veteran of WW II. Rebecca Slane was chosen as alternate. She is the daughter of Mr. and Mrs. Charles Slane of North St.

Otto Karl Riegger, son of Mr. and Mrs. Karl Riegger, received an honor award when the University of Michigan honored undergraduate students for outstanding

grades, officer, Ralph W. Bonner, says its eventual goal is to have 25 percent of the work force composed of minority group members, since that roughly is the makeup of the population in areas where most of the work is being done.

scholastic achievement during the past two semesters.

The Lutheran God-Home-Country award for 4-H club members is to be presented to Marlene M. Kuhl at the morning service at Zion Evangelical Lutheran church at Rogers Corners next Sunday. Miss Kuhl, who is 18 years old, is the daughter of Mr. and Mrs. Arthur Kuhl.

Included on the list of Michigan State University students whose names appear on the Honors List for the winter term of 1957 are three Chelsea young people, Nancy Atkinson, Constance Steinbach, and Janet Widmayer. Miss Atkinson is the daughter of Mr. and Mrs. George W. Atkinson, of Madison St.; Miss Steinbach's parents are Mr. and Mrs. Martin Steinbach of Harrison St., and Miss Widmayer is the daughter of Mr. and Mrs. Harold Widmayer of Hayes Rd. Students on the list have maintained a 3.50 or higher average for the term, equivalent to a B plus or better.

24 Years Ago...

Thursday, May 15, 1947—

Helen Harker, daughter of Emmett M. Harker, and the late Mrs. Emmet Harker, has been named valedictorian of the senior class, with a 3.8 average out of a possible 4.0. Helen was born Aug. 26, 1929 in Chelsea, and previous to entering high school she attended St. Mary school. She is treasurer of her class and has been very active in girls' athletics.

Robert Daniels, son of Mr. and Mrs. Warren Daniels, is salutatorian of the Class of 1947 with an average of 3.7 out of a possible 4.0. Bob was born March 10, 1929, and has always attended the Chelsea Public schools. Throughout his high school career he has been active in athletics and in his senior year was editor to the Annual.

Chelsea's High school chorus, under the direction of Arthur L. Redner, will present the musical comedy, "In Old Vienna" by Benedict, Crane and Wilson. Cast of principals will find Robert Merkel as "Hans Maier, proprietor of the inn." Marilyn Eschbach will play the part of "Louisa, waitress

of the inn," while Jack Wellnitz is to be "Kinski, chief of police in Vienna." The part of "Bumski" is to be played by Loren Munro, while Robert Barlow is to be "Rumski." Bragdon Barlow is to be "J. Jenson Jones, advertising expert," while Nancy Loose will play "Ilona, a gypsy girl." "Jago, a gypsy chieftain," will be played by Jerome Burg. Anne Lamberton plays "June Pennington," and Dave Slane plays "Arthur Crefont, an artist." Jack Merkel will take the part of "Jonas Pennington, pickle manufacturer," while Wilma Koenigster is to play "Lady Vivian DeLancy."

34 Years Ago...

Thursday, May 13, 1937—

Commencement speaker for Chelsea High school's annual commencement exercises, to be held June 3, at the high school will be Dr. T. Luther Pardon, who is in charge of the placement bureau at the University of Michigan. Members of the class of 1937 are: Jane Alexander, Marian Ashfal, Eileen Adam, Paul Bristle, Harrie Bleecker, Jr., Elsie Bareis, Charles Eyerat, Robert Gilbert, Harold Grove, George Goodwill, Bernice Howe, Harold Harrison, Dorothy Honeck, Earl Hafley, Virginia Liebeck, Sophia Koneski, Ruth Lindemann, Grace Kiss, Muriel Martin, Mark McKernan, Monica McKernan, Edward Myers, Kenneth Niehaus, Harley Prudden, George Prizing, Jane McGaffigan, Paul Pielemeier, Helen Pritchard, Ralph Quillen, Wilma Runciman, Doris Rogers, Clara Schenk, Edwin Spiegelberg, Ruth Spooner, Ruth Utend, Bernadine Wheeler. Officers of the class are Marian Ashfal, president; George Prizing, vice-president; Harley Prudden, secretary; Paul Pielemeier, treasurer. Paul Pielemeier is valedictorian, and Marian Ashfal is salutatorian.

MONEY TROUBLE?
ONE PLACE TO PAY!
Credit Management Service
662-2565
215 South Fifth Ave.
Ann Arbor
State Licensed and Bonded

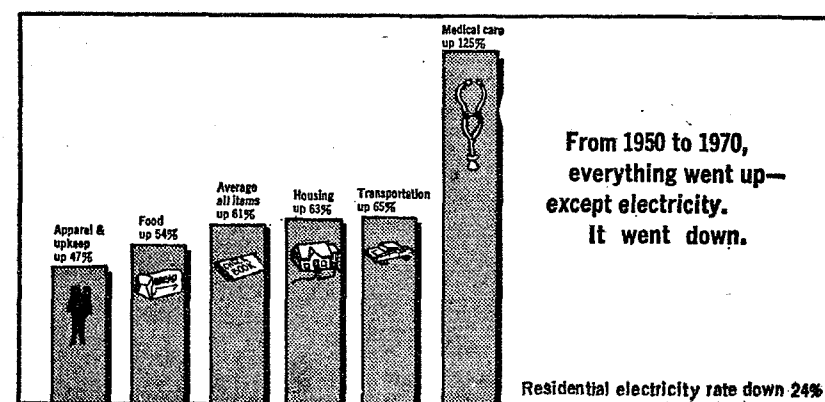
SING-ALONG MUSIC at INVERNESS INN

NORTH LAKE

Saturday Nights - 9:30 p.m. to 1:30 a.m.
Music by JIM ROMINE & GARY SCRIPPER

YOUR FAVORITE SANDWICHES
SHRIMP, CHICKEN & FISH DINNERS

We need to raise our rates...



... From here to here.

We've just asked the Michigan Public Service Commission to allow us to raise our electric rates for industries, businesses, and homes.

If approved, the new rates would provide about 11% more revenue to enable us to keep up with population growth. This works out to about a nickel a day extra for our average domestic customer.

We don't minimize the importance of a nickel a day. That's \$18.00 a year, which can buy quite a few good things.

But we do want to put it in perspective. And we want you to know why we need it, and what we're going to do with it.

First, to put it in perspective, we didn't want to ask for this increase. We were forced to. We need additional revenue to build the facilities to provide, in the future as in the past, fully reliable electric service for every purpose.

If the new rates are approved—and the Public Service Commission will spend months evaluating our need—the average cost of a kilowatt-hour for domestic customers will still be less (as the graph above shows) than it was in 1950. In that year, it was just over 3 cents. With the new rates, it will be about 2.6 cents.

Now why do we need it? In a word,

inflation. Our costs have gone up tremendously. In the past five years, fuel has gone up 38%, labor 32%, local taxes 23%, and interest on bond issues 88%.

The cost of running our company this year will increase far more than the amount of our last rate increase.

What are we going to do with the proceeds of this rate increase? The most discouraging experience in these days of inflation is to pay more, and get less. Not so with this increase. It will enable us to construct the facilities to keep pace with the ever-increasing demand for electricity for home and factory.

Building new power plants is a job that never ends because the demand for electricity doubles every ten years. But, in the last 3 years, the cost of installing each new kilowatt of capacity rose 40%.

We will also be able to continue, and indeed to enhance, our vital programs for the improvement of air, land, and water resources of the area.

We do not expect anyone to be pleased with a rate increase. But we do ask them to try to understand why we need it.

By receiving a little more in rates today, we will be better able to meet our many responsibilities tomorrow.

Detroit Edison

2000 Second Avenue, Detroit, Michigan 48226

Howell Livestock Auction

The Wise Owl Says Ship to Howell
SALE EVERY MONDAY, 2 p.m.
Phone 546-2470, Jim Franklin
Mason 677-8941

Market Report for May 10

CATTLE—

Good to Choice Steers, \$32 to \$34
Good-Choice Heifers, \$29 to \$32
Fed Holstein Steers, \$26 to \$29
10-12s, \$25 and down

COWS—

Heifer Cows, \$24 to \$26
10-12s, \$22 to \$24.50
Canner-Butter, \$19 to \$22
Fat Beef Cows, \$20 to \$22

BULLS—

Heavy Bologna, \$27 to \$30
Light & Common, \$25 and down

CALVES—

Prime, \$42 to \$46
Good-Choice, \$35 to \$42
Heavy Decans, \$38 to \$45
Cull & Med., \$25 to \$35

FEEDERS—

800-600 lb. Good to Choice Heifers, \$25 to \$28
400-500 lb. Good-Choice Steers, \$30 to \$36
800-500 lb. Holstein Steers, \$20 to \$24
Common-Med., \$25 and down

SHEEP—

Woolled Slaughter Lambs:
Choice-Prime, \$27 to \$30
Good-Utility, \$23 to \$27
Slaughter Ewes, \$17.50 to \$19
Feeder Lambs, all weights, \$24 to \$27

HOGS—

800-600 lb. No. 1, \$18.50 to \$19.50
200-240 lb. No. 1, \$17.50 to \$18.50
240 lb. and up, \$15 to \$17.50
Light Hogs, \$16 and down

Sows:

Fancy Light, \$14 to \$15
800-500 lb. \$11 to \$15
500 lb. and up, \$13 to \$14

Boars and Stags:

All Weights, \$18 to \$16

Feeder Pigs:

Per Head, \$8 to \$14

HAY—

1st Cutting, 60c to 80c
2nd Cutting, 50c to \$1.00

STRAW—

Per Bale, 50c to 60c

COWS—

Tested Dairy Cows, \$300 to \$400
Tested Beef Type Cows, \$250 to \$325

Established 1871 The Chelsea Standard Telephone GR 5-3531

Excellence Award By Michigan Press Association
1951-1952-1960-1964-1965-1966

Walter P. Leonard, Editor and Publisher

Publishes every Thursday morning at 800 North Main Street, Chelsea, Mich. 48118, and second class postage paid at Chelsea, Mich., under the Act of March 3, 1879.

ADDRESS CORRECTION REQUESTED

Subscription Rates (Payable in Advance)

In Michigan:	Outside Michigan:
One Year: \$4.00	One Year: \$6.00
Six Months: \$2.25	Six Months: \$3.50
Single Copies: \$.15	Single Copies: \$.20

Service men or women, anywhere, 1 year \$4.00

MEMBER National Advertising Representatives MICHIGAN NEWSPAPERS, INC.

457 Michigan Ave. East Lansing, Mich. 48823

Association - Founded 1888

OPEN

For the Season
Wednesday thru
Sunday
11 a.m. to 9 p.m.

DELICIOUS FRIED CHICKEN

Individual Chicken Dinners

Includes cole slaw, french fries

BUCKET OF CHICKEN

ROOT BEER BY THE GALLON

ALSO: SANDWICH & FOUNTAIN MENU

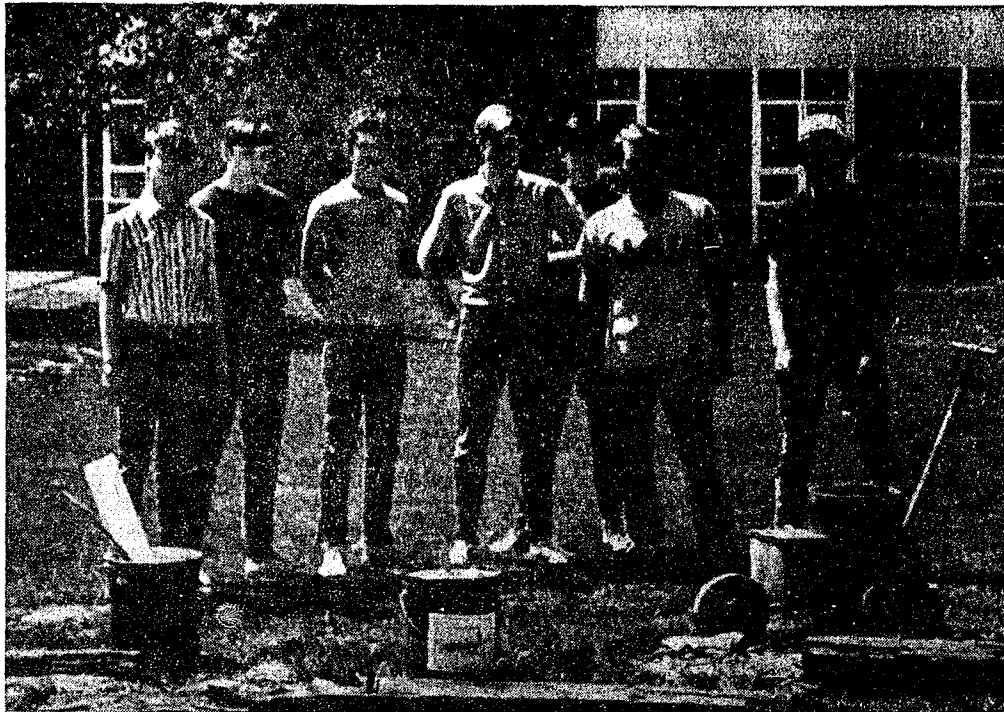
L. & R. DRIVE-IN

North Territorial and Dexter Townhall Rd.

PHONE 426-8666

(Call ahead and your take-out order will be waiting)





KEY CLUB MEMBERS who painted the 160 parking spaces back onto the Chelsea High school parking lot Saturday, are from left, Houston Hardy, Norbert Weber, Dennis Landwehr, Ken Kusterer, Ron Landwehr, Jeff Bust, and Martin Johnson.

Michigan Week...

(Continued from page one)
operation among all communities and people to the end that all of Michigan will work together to make the state even more livable and attractive.

The first auto traffic tunnel built between two nations was the mile-long Detroit-Windsor tunnel.

Key Club Members Paint Lines on School Parking Lot

Saturday, May 8 members of the Key Club at Chelsea High school with the co-operation of village employees, painted 160 parking spaces on the parking lot at the school. Village officials loaned the use of their painting machine, and instructed on the project. They also thoroughly swept the area prior to the painting with the street sweeping machine.

Those who participated in the project include Houston Hardy, Ken Kusterer, Ron Landwehr, Jeff Bust and Martin Johnson, Key Club members. Faculty advisor of the Key Club at Chelsea High is Fred Elmore.

Tennis Team Wins 2 More For 3-0 Record

Chelsea's tennis team has been doing well, as they defeated two more teams this past week to bring their record to 3-0 for the year.

Meeting the Marshall JV team on Monday, Chelsea took top honors with a score of 4-2. All doubles contests were won by the Chelsea team, as Lynn Houle, and John Gilbert took two straight sets, followed by Steve Knickerbocker and John Porter who also took two straight sets.

Singles were split two and two as Tom Hubert took two straight sets, followed by Mike Herger, who won 2-1. Bill Stevens, third singles, lost, 2-0, as did Doug Van order, 2-1. Van Gorder's match lasted more than two hours, which caused team members to return to Chelsea, very late Monday evening.

Tuesday, Chelsea trounced Stockbridge, 5-1. All doubles won as Lynn Houle and John Gilbert took two straight games followed by Steve Knickerbocker and John Porter who also took two straight games. Number three doubles, Doug Van Gorder and Ed Koenigster won their match, 2-1. First singles, Bob Rutherford lost his match two straight, but Tom Hubert and Mike Herger both came back winning their matches two straight.

Track Machine Tramples Over Saline, 86-32

Chelsea trackmen kept their dual meet record clean by running over Saline, 86-32, Thursday, May 6. Chelsea's dual meet record of 7-0 over-all, and 6-0 in the league was maintained in the meet as the Bulldogs built up a 29-7 lead in the field events, continuing to lead with a high number of first and second placings in the running events.

For the third week in succession, Kim Aronson lowered his 140-yard dash time, setting a school and track record of :51.3. The 880-yard relay team also set a new school and track record by lowering their time to 1:32.1. Members on that first-place team were Lary Gorton, Mark Collins, Kim Aronson, and Jeff Hughes. Randy Seitz was first in the shot put, with 46' 9 1/2", while Dale Robbins was third with 41' 5". Mark Collins took top honors in the long jump, leaping 20' 1/4". First, second, and third-place winners in the pole vault event were Chelsea trackmen Tim Lancaster, in 11' 6", Dan Hoover, second with 11', and Bruce Guster, third, with 10'.

Roger Fitch was first in the high jump, with 5' 10", followed by a two-way tie for second between Jon Lantis and Dave Porath, with 5' 8".

First and second places in the 880-yard run were garnered by George Cameron, 2:07, and Dan Hoover, 2:12.7, respectively.

Mitchell Heard placed first in the 120-yard high hurdles event in :15.6. Only three-tenths of a second behind the winner, but commanding third place was Lary Gorton in :15.9.

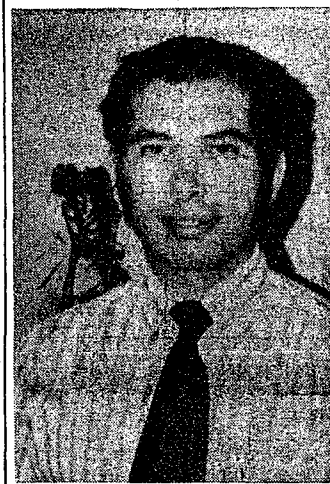
Winner of the mile run was Dave Buxton in 4:46.7. Second and third places in the 100-yard dash were gathered by Jeff Hughes, :10.7, and Mark Collins, :10.8, respectively.

Kim Aronson was first in the 440-yard dash in :51.3, followed by George Cameron in second with :54.3.

Lary Gorton was first in the 880-yard low hurdles in :21.3, followed by Mitchell Heard in second with :21.4.

Kim Aronson was first in the 220-yard dash with :23.2, followed just a hair's breadth behind by Jeff Hughes in second with 23.3.

Chelsea took first place in the mile relay in 3:40.3, with runners George Cameron, Dan Hoover, Mark Collins, and Dave Buxton.



DR. DONALD S. SAFER

Kiwanians See Slides of Trip to Japan

Forty-eight Chelsea Kiwanians and several guests were present Monday evening, May 10 for their regular meeting, to hear Dr. Donald S. Safer, of the University of Michigan School of Orthodontics. Assisted by his wife, "Ricky," Dr. Safer presented a slide presentation entitled "Occidental's View of Japan," which chronicled his travels to that country recently. Pictures of the cities of Kyoto, Osaka, and Hiroshima were shown, as well as views of World Expo '70.

Charles Cox, an associate of Safer's at the University, presented him to the Club.

Guests for the evening included Mrs. Charles (Betty) Cox, and Frederick Morris, Terre Haut, Ind., father of the Rev. John Morris of Zion Lutheran church.

It was announced that proceeds from the Kiwanis Mothers' Day Flower Sale exceeded last year's sum by \$400.

Program for May 17 will be Thomas Hodgson, park naturalist of the Waterloo Recreation Area. He will be introduced by Glenn Kraai.

SPECIALS

12-OZ. CAN ALL FLAVORS

FAYGO POP, 6 for 49c

With 4 pages Pantry Stamps

GRADE A, MEDIUM

EGGS doz. 19c

With 4 Pages Pantry Stamps

Open 6 a.m. to 11 p.m. 7 Days a Week

GALLUP-SILKWORTH PUMP & PANTRY

295 S. Main St., Chelsea

Phone 475-7051

NEW ARRIVAL at your Jiffy Market PATENTED 2 CYCO POWER FUEL

For the first time in the Chelsea area we bring you a superior Chelsea product at a lower retail price that will save you money. This outstanding 2-cycle engine fuel is available to you 7 days a week from 7 a.m. to 10 p.m.

Works Wonders for Your
OUTBOARDS
SNOWMOBILES
POWER MOWERS
ALL-TERRAIN VEHICLES
CHAIN SAWS
GO-KARTS
UTILITY ENGINES

Endorsed By Thousands

Remember—Patented 2 CYCO POWER FUEL is not a "refinery mix of gasoline and oil" but a proven, patented, permanent blend of superior and costly lubricants with a high octane non-leaded marine gasoline base.

ONE USE CONVINCES

Unique, new patented 2 CYCO POWER FUEL makes all other fuels . . . including "homemade" mixes of gas and oil . . . forever obsolete—because

2 CYCO POWER FUEL
Offers These Exclusive Advantages

- ★ **CONVENIENT**—2 CYCO POWER FUEL is a permanently blended complete fuel . . . nothing for you to add.
- ★ **PROTECTS PROPERLY**—Contains more lubricants, as recommended for top engine performance.
- ★ **CLEANER BURNING**—Smokeless . . . no carbon, gum, varnish, plug fouling deposits.
- ★ **SMOOTHER ENGINE PERFORMANCE**—Contains no lead compounds.
- ★ **LONGER ENGINE LIFE** . . . with fewer repairs.

For Convenience

More Power
Superior Lubrication
More Mileage

Continuous
Instant Starting
Cleaner Burning
Power

Use This Specialized

2-Cycle Fuel

Fill Up Now

With New, Patented

2 Cyco Power Fuel

Jiffy market

BIG ENOUGH TO SERVE YOU.....SMALL ENOUGH TO KNOW YOU!

Corner of SIBLEY & WERKNER RDS.....CHELSEA, MICHIGAN

COMPLETE SUPER MARKET

SALE PRICES EFFECTIVE THURSDAY, MAY 13, THRU SUNDAY, MAY 16, 1971.

Store Hours Are 7 a.m. to 10 p.m. 7 Days A Week

AGAR BONELESS, COOKED	GROUND FRESH DAILY
CANNED HAM 5 lbs. \$3.99	HAMBURGER . . lb. 65c
	SATISFACTION GUARANTEED
SOLD OUT LAST WEEK!	FARMER PEET'S
FROG LEGS . . . lb. 89c	HOT DOGS 69c

Holsum Hamburger or Hot Dog	OPEN PIT	PURE
SOF-BUNS 8 Count Pkg. 29c	BARBECUE SAUCE 1-Lb., 2-Oz. Pkg. 39c	ORANGE JUICE 1/2 Gal. Plastic 59c
MICHIGAN	CHARCOAL BRIQUETS 20 lb. bag \$1.19	ICE CUBES 49c bag
SOUR CREAM 1 Pint 39c		

RISDON'S TOP QUALITY HOMOGENIZED
1/2 gal. 49c MILK gal. 88c

Easy Monday	CIGARETTES	COMPLETE STOCK	ALL FLAVORS
PINK LOTION FOR DISHES 1/2 Gal. 49c	YOUR FAVORITES 39c \$3.39 Pack Ctn.	BEER & WINE SUPERMARKET PRICES	KOOL-AID 5 pkgs. 29c

MEADOWDALE	PEPSI-COLA	AJAX
Margarine 1-Lb. Pkg. 19c	8 1-Lb. 10-Oz. Non-Return Bottles 99c <i>Pepsi and a price that's hard to beat!</i>	Laundry Detergent 3-Lb., 1-Oz. Box 75c

MARATHON GAS PUMPS
REGULAR 33.9 **TOP QUALITY GAS!** **PREMIUM 37.9**
NOTE: Our Gas Prices INCLUDE ALL TAXES
Includes All Taxes

OPEN DAILY and SUNDAY, 7 a.m. to 10 p.m.

GAMBLES

110 N. Main St. Phone 475-7472

WORKS YEAR 'ROUND

8-HP, 32-Inch MTD '800' LAWN TRACTOR

Use Our Budget Payment Plan **\$629**

Instant key-starting tractor-mower hauls supplies, plows or throws snow with optional attachments! Briggs & Stratton engine. 3 speeds forward and reverse. Handy controls for tool lift, power takeoff. Delco-Remy generator system.

COMPACT! Priced Low!

8-HP, 30-Inch 'Superide' Twin Blade Rotary Mower

Use Our Budget Payment Plan **\$399**

Easy tractor-style handling at this low priced Differential slows inside wheel on turns, resists scuffing lawn. 30" twin blade floating deck has 1-lever height adjustment. Clutch/brake pedal. Recoil-starting Briggs & Stratton engine.

Ads
Taken
Till 5 p.m.
Tuesday

IT'S EASY TO
BUY-SELL-RENT-
HIRE & FIND WITH

WANT ADS

Just
Call
GR 5-3581

WANT ADS

The Chelsea Standard

WANT AD RATES

PAID IN ADVANCE—All regular advertisements, 50 cents for 25 words or less, each insertion. Count each figure as a word. For more than 25 words add 2 cents per word for each insertion. "Blind" ads or box numbers add 50 cents per insertion. CHARGE RATES—Same as cash in advance, with 15 cents bookkeeping charge if not paid before 5 p.m. Tuesday preceding publication. Pay in advance, send cash or stamps and save 15 cents. DISPLAY WANT ADS—Rate, \$1.10 per column inch, single column width only. 6-inch and 14-column light type only. No borders or boldface type. CARDS OF THANKS or MEMORIALS—Single paragraph style, \$1.00 per insertion for 50 words or less; 2 cents per word beyond 50 words. Minimum, 1 inch. COPY DEADLINE—5 p.m. Tuesday week of publication.

FOR REAL DOLLAR SAVINGS be sure and see before you buy any new or used car. Palmer Motor Sales, Inc. Your Ford Dealer for over 50 years. 24tf

ALLSTATE INSURANCE
AUTO - BOAT - COMMERCIAL
LIFE - HEALTH - HOME
Phone Even. or Week-ends for
N. H. MILES, Agent
GR 5-8334 44

'68 PONTIAC 4-door for sale. Good running condition. \$125. Phone 426-5731 days; 426-4169 evenings. -x47

LOST—All white male cat, name Snowball. Missing since April 27. Reward. If you have any information. Phone 475-7509. -x48

Hearthside Yarn Shop
5450 Conway Road
Yarns, needles, accessories
Free instructions in knitting and crocheting with follow-up assistance.
Orders taken for hand-made items.
Ph. 475-2014 36tf

CHELSEA JAYCEES annual rummage auction sale coming June 26. For pick-up of your articles call Glenn Weir, 475-7509, Dan Eder, 475-2663, or Mitch Zink, 475-7912. 44tf

3 BEDROOM home for sale, separate dining room. Full, walk-out basement. Two-car garage with upstairs. 8015 Forest. 426-8698. -x45tf

COMPLETELY FINISHED 3-bedroom home on your lot for \$16,500. Wal-Bilt Builders, 6160 Dexter-Pinckney Rd. Ph. 426-4311. Model open Sunday. 47

Public Nursery Auction!
Sunday, May 16
beginning at 2 p.m.
Evergreens, shrubs and trees, all kinds and sizes. Blue Spruce, Japanese Yews, Mountain Ash, Holly, Sunburst Locust, Red Maple, Rhododendrons, Red Barberry, flowering trees, etc.
All plants fresh dug and ready to go. Buy at your price—why pay more? Leave anytime. Inspection invited.
We guarantee 50-50 and will deliver.
Mason's Nursery
Phone 429-5034
8794 Macon Rd., Saline, Mich.
1/4 mile south of cemetery
x46tf

Evergreens, shrubs and trees, all kinds and sizes. Blue Spruce, Japanese Yews, Mountain Ash, Holly, Sunburst Locust, Red Maple, Rhododendrons, Red Barberry, flowering trees, etc.
All plants fresh dug and ready to go. Buy at your price—why pay more? Leave anytime. Inspection invited.
We guarantee 50-50 and will deliver.
Mason's Nursery
Phone 429-5034
8794 Macon Rd., Saline, Mich.
1/4 mile south of cemetery
x46tf

Evergreens, shrubs and trees, all kinds and sizes. Blue Spruce, Japanese Yews, Mountain Ash, Holly, Sunburst Locust, Red Maple, Rhododendrons, Red Barberry, flowering trees, etc.
All plants fresh dug and ready to go. Buy at your price—why pay more? Leave anytime. Inspection invited.
We guarantee 50-50 and will deliver.
Mason's Nursery
Phone 429-5034
8794 Macon Rd., Saline, Mich.
1/4 mile south of cemetery
x46tf

Evergreens, shrubs and trees, all kinds and sizes. Blue Spruce, Japanese Yews, Mountain Ash, Holly, Sunburst Locust, Red Maple, Rhododendrons, Red Barberry, flowering trees, etc.
All plants fresh dug and ready to go. Buy at your price—why pay more? Leave anytime. Inspection invited.
We guarantee 50-50 and will deliver.
Mason's Nursery
Phone 429-5034
8794 Macon Rd., Saline, Mich.
1/4 mile south of cemetery
x46tf

Evergreens, shrubs and trees, all kinds and sizes. Blue Spruce, Japanese Yews, Mountain Ash, Holly, Sunburst Locust, Red Maple, Rhododendrons, Red Barberry, flowering trees, etc.
All plants fresh dug and ready to go. Buy at your price—why pay more? Leave anytime. Inspection invited.
We guarantee 50-50 and will deliver.
Mason's Nursery
Phone 429-5034
8794 Macon Rd., Saline, Mich.
1/4 mile south of cemetery
x46tf

Evergreens, shrubs and trees, all kinds and sizes. Blue Spruce, Japanese Yews, Mountain Ash, Holly, Sunburst Locust, Red Maple, Rhododendrons, Red Barberry, flowering trees, etc.
All plants fresh dug and ready to go. Buy at your price—why pay more? Leave anytime. Inspection invited.
We guarantee 50-50 and will deliver.
Mason's Nursery
Phone 429-5034
8794 Macon Rd., Saline, Mich.
1/4 mile south of cemetery
x46tf

Evergreens, shrubs and trees, all kinds and sizes. Blue Spruce, Japanese Yews, Mountain Ash, Holly, Sunburst Locust, Red Maple, Rhododendrons, Red Barberry, flowering trees, etc.
All plants fresh dug and ready to go. Buy at your price—why pay more? Leave anytime. Inspection invited.
We guarantee 50-50 and will deliver.
Mason's Nursery
Phone 429-5034
8794 Macon Rd., Saline, Mich.
1/4 mile south of cemetery
x46tf

Evergreens, shrubs and trees, all kinds and sizes. Blue Spruce, Japanese Yews, Mountain Ash, Holly, Sunburst Locust, Red Maple, Rhododendrons, Red Barberry, flowering trees, etc.
All plants fresh dug and ready to go. Buy at your price—why pay more? Leave anytime. Inspection invited.
We guarantee 50-50 and will deliver.
Mason's Nursery
Phone 429-5034
8794 Macon Rd., Saline, Mich.
1/4 mile south of cemetery
x46tf

Evergreens, shrubs and trees, all kinds and sizes. Blue Spruce, Japanese Yews, Mountain Ash, Holly, Sunburst Locust, Red Maple, Rhododendrons, Red Barberry, flowering trees, etc.
All plants fresh dug and ready to go. Buy at your price—why pay more? Leave anytime. Inspection invited.
We guarantee 50-50 and will deliver.
Mason's Nursery
Phone 429-5034
8794 Macon Rd., Saline, Mich.
1/4 mile south of cemetery
x46tf

Evergreens, shrubs and trees, all kinds and sizes. Blue Spruce, Japanese Yews, Mountain Ash, Holly, Sunburst Locust, Red Maple, Rhododendrons, Red Barberry, flowering trees, etc.
All plants fresh dug and ready to go. Buy at your price—why pay more? Leave anytime. Inspection invited.
We guarantee 50-50 and will deliver.
Mason's Nursery
Phone 429-5034
8794 Macon Rd., Saline, Mich.
1/4 mile south of cemetery
x46tf

Evergreens, shrubs and trees, all kinds and sizes. Blue Spruce, Japanese Yews, Mountain Ash, Holly, Sunburst Locust, Red Maple, Rhododendrons, Red Barberry, flowering trees, etc.
All plants fresh dug and ready to go. Buy at your price—why pay more? Leave anytime. Inspection invited.
We guarantee 50-50 and will deliver.
Mason's Nursery
Phone 429-5034
8794 Macon Rd., Saline, Mich.
1/4 mile south of cemetery
x46tf

Evergreens, shrubs and trees, all kinds and sizes. Blue Spruce, Japanese Yews, Mountain Ash, Holly, Sunburst Locust, Red Maple, Rhododendrons, Red Barberry, flowering trees, etc.
All plants fresh dug and ready to go. Buy at your price—why pay more? Leave anytime. Inspection invited.
We guarantee 50-50 and will deliver.
Mason's Nursery
Phone 429-5034
8794 Macon Rd., Saline, Mich.
1/4 mile south of cemetery
x46tf

WANT ADS

BOARDING, trimming, training. Town and Country Kennels, Jackson Rd. at Baker. NO 8-7200. 7tf

Gem Travel Trailers and Campers
PICK UP COVERS
4" ————— \$100.00
26" ————— \$179.00 and up

Triangle Sales
Chelsea 475-4302 40tf

CLOGGED SEWER
Reynolds Sewer Service
We Clean Sewers Without Digging
Drains Cleaned Electrically
FREE ESTIMATES
2-YEAR GUARANTEE
Phone Ann Arbor NO 2-5277
"Sewer Cleaning Is Our Business—Not a Side Line" 38tf

6 ACRES for Sale—2 miles north, paved road, half wooded. Phone 475-8739. -47

KNAPP SHOES
For Cushion Comfort
Robert Robbins
475-7282 48tf

LUGGAGE
Discount Prices
at
DANCER'S 47

FOR SALE—15 ft. fiberglass boat with steering gear, running lights, air horn and spotlight, 18 h.p. electric start Johnson motor and trailer, \$450. Call 475-5181 evenings. -x47tf

FOR SALE—Welch pony, bridle, saddle, also harness, pony cart with hydraulic brakes, and speedometer. Ph. 475-2782 any time. x48

NEW ARRIVAL at JIFFY MARKET
2 CYCO FUEL
Specialized, Patented Fuel for all 2-cycle engines.
At Lowest Retail Price in Chelsea Area. 47

2-CYCO FUEL
For All 2-Cycle Engines
WHITE GAS
Available at
Gateway Sports Centre, Inc. 45tf

CAR RENTAL by the day, week, end, week or month. Full insurance coverage, low rates. Call Lyle Chriswell at Palmer Motor Sales GR 5-3271. 25tf

FORMAL WEAR
RENTAL SERVICE
Proms - Weddings - Special Events
6 different colors.
Foster's Men's Wear 48tf

WILLIS Real Estate
(517) 522-8481 47

WALLPAPER
New Books
Quick Delivery
DANCER'S BASEMENT 47

NEW ARRIVAL at JIFFY MARKET
2 CYCO FUEL
Specialized, Patented Fuel for all 2-cycle engines.
At Lowest Retail Price in Chelsea Area. 47

CHELSEA JAYCEES annual rummage auction sale coming June 26. For pick-up of your articles call Glenn Weir, 475-7509, Dan Eder, 475-2663, or Mitch Zink, 475-7912. 44tf

EVERETT'S annual rummage auction sale coming June 26. For pick-up of your articles call Glenn Weir, 475-7509, Dan Eder, 475-2663, or Mitch Zink, 475-7912. 44tf

EVERETT'S annual rummage auction sale coming June 26. For pick-up of your articles call Glenn Weir, 475-7509, Dan Eder, 475-2663, or Mitch Zink, 475-7912. 44tf

EVERETT'S annual rummage auction sale coming June 26. For pick-up of your articles call Glenn Weir, 475-7509, Dan Eder, 475-2663, or Mitch Zink, 475-7912. 44tf

EVERETT'S annual rummage auction sale coming June 26. For pick-up of your articles call Glenn Weir, 475-7509, Dan Eder, 475-2663, or Mitch Zink, 475-7912. 44tf

EVERETT'S annual rummage auction sale coming June 26. For pick-up of your articles call Glenn Weir, 475-7509, Dan Eder, 475-2663, or Mitch Zink, 475-7912. 44tf

EVERETT'S annual rummage auction sale coming June 26. For pick-up of your articles call Glenn Weir, 475-7509, Dan Eder, 475-2663, or Mitch Zink, 475-7912. 44tf

EVERETT'S annual rummage auction sale coming June 26. For pick-up of your articles call Glenn Weir, 475-7509, Dan Eder, 475-2663, or Mitch Zink, 475-7912. 44tf

WANT ADS

ROBERT PATRICK for home improvement, building and maintenance. Ph. 475-7460. 45tf

HAMMOND ORGAN teachers
wanted to teach in their own homes. Call Grinnell Brothers, Ann Arbor, 682-5687. 34tf

CALL FRANK for all your carpet cleaning jobs, moving or weekend. No less than 3 hours to dry. Only 10c per square foot. Phone now for free estimate, 761-4328. All work guaranteed. 33tf

PIANO TUNING, Chelsea and area. Facilities for reconditioning and rebuilding. Used piano sales; reconditioned grands and verticals. E. Eklund. 426-4429. x50tf

Contractor Servicing Chelsea, Dexter and Manchester Areas
Complete Home Remodeling Inside and Outside
Specializing in extra living space, recreation rooms, kitchens and paneling. Installing all aluminum products, 5" eavestroughs, custom-made awnings, windows and doors, aluminum siding in many selected colors and styles.
Please Call
DALE COOK
Chelsea 475-8863 50tf

Seamless Aluminum Gutters
White or brown.
5-Year Guarantee.
WILSON METAL SHOP
428-8468 - Manchester x40tf

PATCHING and PLASTERING.
Call 475-7489. 33tf

USED CARS
'70 Ford 4-dr.
'70 Mustang Fastback
'69 LTD 2-dr. Hardtop. air
'69 Torino GT
'69 Ford Station Wagon
'68 Chev Impala (2)
'68 Ford Convertible
'62 Falcon Wagon
'62 Fairlane 500 4-dr.

TRUCKS
'67 International 1/2 ton pick-up. \$795
'67 Ford 1/2 ton
'67 Chevrolet 1/2 ton
'65 Ford 1/2 ton

PALMER FORD
Open Mon., Wed., Thurs., Till 9:00
Chelsea GR 5-3271 x44tf

Stop Paying Rent
Buy this immaculate 3-bedroom 2-year-old rancher, with full basement and attached garage. Near Win Schuler's Restaurant. \$20,500, with small down payment.

Willis Real Estate
(517) 522-8481 47

WALLPAPER
New Books
Quick Delivery
DANCER'S BASEMENT 47

NEW ARRIVAL at JIFFY MARKET
2 CYCO FUEL
Specialized, Patented Fuel for all 2-cycle engines.
At Lowest Retail Price in Chelsea Area. 47

WORK SHOE HEADQUARTERS
Famous Red Wing Brand
\$12.95 to \$26.95
Foster's Men's Wear 34tf

Real Estate For Sale
CLARENCE WOOD BROKER
Efficient PERSONAL Service
646 Flanders St.
Phone 475-2033 45tf

Real Estate Listings Wanted
Sold out of Chelsea properties. Have buyers waiting.
NO RENTALS
R. D. Miller REAL ESTATE
Real Estate Broker
475-7311
15775 Cavanaugh Lake Rd.
Chelsea, Mich. 44tf

NEW ARRIVAL at JIFFY MARKET
2 CYCO FUEL
Specialized, Patented Fuel for all 2-cycle engines.
At Lowest Retail Price in Chelsea Area. 47

CHELSEA JAYCEES annual rummage auction sale coming June 26. For pick-up of your articles call Glenn Weir, 475-7509, Dan Eder, 475-2663, or Mitch Zink, 475-7912. 44tf

EVERETT'S annual rummage auction sale coming June 26. For pick-up of your articles call Glenn Weir, 475-7509, Dan Eder, 475-2663, or Mitch Zink, 475-7912. 44tf

EVERETT'S annual rummage auction sale coming June 26. For pick-up of your articles call Glenn Weir, 475-7509, Dan Eder, 475-2663, or Mitch Zink, 475-7912. 44tf

EVERETT'S annual rummage auction sale coming June 26. For pick-up of your articles call Glenn Weir, 475-7509, Dan Eder, 475-2663, or Mitch Zink, 475-7912. 44tf

EVERETT'S annual rummage auction sale coming June 26. For pick-up of your articles call Glenn Weir, 475-7509, Dan Eder, 475-2663, or Mitch Zink, 475-7912. 44tf

EVERETT'S annual rummage auction sale coming June 26. For pick-up of your articles call Glenn Weir, 475-7509, Dan Eder, 475-2663, or Mitch Zink, 475-7912. 44tf

EVERETT'S annual rummage auction sale coming June 26. For pick-up of your articles call Glenn Weir, 475-7509, Dan Eder, 475-2663, or Mitch Zink, 475-7912. 44tf

EVERETT'S annual rummage auction sale coming June 26. For pick-up of your articles call Glenn Weir, 475-7509, Dan Eder, 475-2663, or Mitch Zink, 475-7912. 44tf



"Hello, mother—guess whose goose a Standard Want Ad and I cooked today!"

WANT ADS

CHELSEA JAYCEES annual rummage auction sale coming June 26. For pick-up of your articles call Glenn Weir, 475-7509, Dan Eder, 475-2663, or Mitch Zink, 475-7912. 44tf

PLANTS—Strawberry, raspberry, blackberry, currant and gooseberry, asparagus roots. Makieleski Berry Farm, 7130 Platt Rd., 1 mile south of US-12, 1/2 mile west of US-23. 434-3673 and 429-9355. -x48

Real Estate For Sale
BRAND NEW — 3-bedroom brick ranch. Perfect country view. 2 ceramic baths, 2 fireplaces, large (unfinished) rec-room, 2-car attached garage. \$43,500.
7 1/2 ACRES — All inside village limits. Has 3-bedroom house, garage. 745 feet of railroad frontage. \$30,000. Terms.
BUILDING LOT — One mile east on Old US-12. 135 feet of frontage. 1 1/4 acres. \$4000.
10 ACRE LOTS—Several to choose from, 2 1/4 miles out. From \$7,500 up.

CLARENCE WOOD BROKER
Efficient PERSONAL Service
646 Flanders St.
Phone 475-2033 45tf

Real Estate For Sale
55 ACRES on blacktop road.
LISTINGS NEEDED
Call
Kern Real Estate
Phone 475-8563 -39tf

Listings Wanted
Sold out of Chelsea properties. Have buyers waiting.
NO RENTALS
R. D. Miller REAL ESTATE
Real Estate Broker
475-7311
15775 Cavanaugh Lake Rd.
Chelsea, Mich. 44tf

NEW ARRIVAL at JIFFY MARKET
2 CYCO FUEL
Specialized, Patented Fuel for all 2-cycle engines.
At Lowest Retail Price in Chelsea Area. 47

WORK SHOE HEADQUARTERS
Famous Red Wing Brand
\$12.95 to \$26.95
Foster's Men's Wear 34tf

Real Estate Listings Wanted
Sold out of Chelsea properties. Have buyers waiting.
NO RENTALS
R. D. Miller REAL ESTATE
Real Estate Broker
475-7311
15775 Cavanaugh Lake Rd.
Chelsea, Mich. 44tf

NEW ARRIVAL at JIFFY MARKET
2 CYCO FUEL
Specialized, Patented Fuel for all 2-cycle engines.
At Lowest Retail Price in Chelsea Area. 47

WORK SHOE HEADQUARTERS
Famous Red Wing Brand
\$12.95 to \$26.95
Foster's Men's Wear 34tf

Real Estate Listings Wanted
Sold out of Chelsea properties. Have buyers waiting.
NO RENTALS
R. D. Miller REAL ESTATE
Real Estate Broker
475-7311
15775 Cavanaugh Lake Rd.
Chelsea, Mich. 44tf

NEW ARRIVAL at JIFFY MARKET
2 CYCO FUEL
Specialized, Patented Fuel for all 2-cycle engines.
At Lowest Retail Price in Chelsea Area. 47

WORK SHOE HEADQUARTERS
Famous Red Wing Brand
\$12.95 to \$26.95
Foster's Men's Wear 34tf

Real Estate Listings Wanted
Sold out of Chelsea properties. Have buyers waiting.
NO RENTALS
R. D. Miller REAL ESTATE
Real Estate Broker
475-7311
15775 Cavanaugh Lake Rd.
Chelsea, Mich. 44tf

NEW ARRIVAL at JIFFY MARKET
2 CYCO FUEL
Specialized, Patented Fuel for all 2-cycle engines.
At Lowest Retail Price in Chelsea Area. 47

WORK SHOE HEADQUARTERS
Famous Red Wing Brand
\$12.95 to \$26.95
Foster's Men's Wear 34tf

Real Estate Listings Wanted
Sold out of Chelsea properties. Have buyers waiting.
NO RENTALS
R. D. Miller REAL ESTATE
Real Estate Broker
475-7311
15775 Cavanaugh Lake Rd.
Chelsea, Mich. 44tf

NEW ARRIVAL at JIFFY MARKET
2 CYCO FUEL
Specialized, Patented Fuel for all 2-cycle engines.
At Lowest Retail Price in Chelsea Area. 47

WANT ADS

MEL HARTMAN, residential builder. Free estimates: houses, garages, kitchens. Flat work and roofs. Call 878-6514. 13tf

WORK SHOE HEADQUARTERS
Famous Red Wing Brand
\$12.95 to \$26.95
Foster's Men's Wear 34tf

ALCOA SIDING with Remodeling—Since 1938. Prompt service, professional workmanship. William Davis Contractor, Ann Arbor, Mich. Estimate, no obligation. Phone (813) 663-6635. Completed work near you. -x6

USED TRACTOR TIRES—Large inventory on hand. Also used passenger - truck - grader tires. Jackson Tire Brokers, M-106, Munith, Mich. Ph. 596-2925. 32tf

Receptionist Admissions Clerk
Previous experience helpful, recent references, good fringe benefits, ideal working conditions.
Apply in Person
Chelsea Medical Center, Inc.
Chelsea Community Hospital
775 S. Main St.
An Equal Opportunity Employer 47

SHOES - SHOES
Many Other
Real Bargains.
1/3 to 1/2 Off
DANCER'S BARGAIN FLOOR 47

NEW ARRIVAL at JIFFY MARKET
2 CYCO FUEL
Specialized, Patented Fuel for all 2-cycle engines.
At Lowest Retail Price in Chelsea Area. 47

WORK SHOE HEADQUARTERS
Famous Red Wing Brand
\$12.95 to \$26.95
Foster's Men's Wear 34tf

Real Estate Listings Wanted
Sold out of Chelsea properties. Have buyers waiting.
NO RENTALS
R. D. Miller REAL ESTATE
Real Estate Broker
475-7311
15775 Cavanaugh Lake Rd.
Chelsea, Mich. 44tf

NEW ARRIVAL at JIFFY MARKET
2 CYCO FUEL
Specialized, Patented Fuel for all 2-cycle engines.
At Lowest Retail Price in Chelsea Area. 47

WORK SHOE HEADQUARTERS
Famous Red Wing Brand
\$12.95 to \$26.95
Foster's Men's Wear 34tf

Real Estate Listings Wanted
Sold out of Chelsea properties. Have buyers waiting.
NO RENTALS
R. D. Miller REAL ESTATE
Real Estate Broker
475-7311
15775 Cavanaugh Lake Rd.
Chelsea, Mich. 44tf

NEW ARRIVAL at JIFFY MARKET
2 CYCO FUEL
Specialized, Patented Fuel for all 2-cycle engines.
At Lowest Retail Price in Chelsea Area. 47

WORK SHOE HEADQUARTERS
Famous Red Wing Brand
\$12.95 to \$26.95
Foster's Men's Wear 34tf

Real Estate Listings Wanted
Sold out of Chelsea properties. Have buyers waiting.
NO RENTALS
R. D. Miller REAL ESTATE
Real Estate Broker
475-7311
15775 Cavanaugh Lake Rd.
Chelsea, Mich. 44tf

NEW ARRIVAL at JIFFY MARKET
2 CYCO FUEL
Specialized, Patented Fuel for all 2-cycle engines.
At Lowest Retail Price in Chelsea Area. 47

WORK SHOE HEADQUARTERS
Famous Red Wing Brand
\$12.95 to \$26.95
Foster's Men's Wear 34tf

Real Estate Listings Wanted
Sold out of Chelsea properties. Have buyers waiting.
NO RENTALS
R. D. Miller REAL ESTATE
Real Estate Broker
475-7311
15775 Cavanaugh Lake Rd.
Chelsea, Mich. 44tf

NEW ARRIVAL at JIFFY MARKET
2 CYCO FUEL
Specialized, Patented Fuel for all 2-cycle engines.
At Lowest Retail Price in Chelsea Area. 47

WANT ADS

EXPERIENCED CHILD CARE in my home, any time. Ph. 426-4192. x41tf

PIANO TUNING at savings! New man in area offering introductory rates to build clientele. 769-0180. 30tf

USED CARS
1970 Dodge Challenger 2-dr. hardtop. \$2295
1969 Olds Delta 88 Royal 2-dr. hardtop, vinyl top, air cond. \$2395
1969 Olds Delta 88 4-dr. hardtop, vinyl top. \$2295
1969 Dodge Polaro 4-dr. sedan (air cond.). \$1995
1968 Olds 98 Luxury Sedan (air cond.). \$2395

WANT ADS

SEE US for transit mixed concrete. Klumpp Bros. Gravel Co. Phone Chelsea 475-2530, 4920 Loveland Rd., Grass Lake, Mich. x40tf

TRAVEL TRAILERS—13-ft. and up; 10x55 ft. trailers. John R. Jones Trailer Sales, Gregory, Mich. Phone 498-2655. x43tf

FOR SALE—2.3 acres with private drive off Old US-12 West. \$6,500. Phone 475-8904. x44tf

HELP WANTED

We want someone in this area who has

Mechanical Ability for sales and service

Earnings and opportunity is quite high on this job regardless of part-time or full-time. No investment. For complete information

write:

MR. C. E. WOODARD
626 Second
Ann Arbor, Mich. 48103

An Equal Opportunity Employer x47

GET YOUR swimming pool ready for summer. Complete line of pool chemicals. Gambles. Ph. 475-472. x49

CAR & TRUCK LEASING. For details see Lyle Christwell at Palmer Motor Sales, GR 5-3271. x49

FOR SALE—7' x 4' Brunswick pool table. Phone 428-8547 after 5 p.m. x43tf

FOR SALE—8' hydroplane with steering controls. Completely fiberglassed, perfect condition. Phone 663-8228. x45tf

ARBOR GIRL

Ann Arbor's Newest and Rapidly Growing Temporary Help Agency has urgent need for experienced

KEY PUNCH OPERATORS
MT/ST TYPISTS
TYPISTS
STENOS

GENERAL CLERICAL

These are extremely interesting assignments, and are in Ann Arbor. They range from a few to many weeks duration.

ARBOR GIRL

1945 PAULINE BLVD.
ANN ARBOR, MICHIGAN
761-5252 x47

WANT ADS

HORSE SHOEING—Experienced, corrective trimming and shoeing. Prompt service. Borium shoes, Buck Myer. Phone 1-517-546-1510. x47

WANTED TYPIST

Accurate, 55-60 wpm.
Apply in Person

Chelsea Standard
300 N. Main St. Ph. GR 5-8881

NEED 3 MAN and wife teams who would like to earn \$2,000 to \$3,000 per month. For appointment call collect 1-517-764-1261 after 6 p.m. x48

FANCY SANDWICHES of colored bread for graduation, weddings, parties, etc. Reasonable. Phone 475-8863. x47

FOR SALE—Ladders. 1 40-ft. alum., 1 12-ft. alum., 1 24-ft. wood, 1 5-ft. wood. \$100 for all. Phone 475-1228 anytime. x47

STANLEY'S TREE SERVICE

Trimming, removals, cabling, bracing, surgery, etc.

FREE ESTIMATES

Phone 428-8967

If no answer, ph. 428-8066 x43tf

Don't Forget THE DEXTER HOUSE TOUR

Friday, May 14

Contemporary

Historical x47

Chuck's Appliance
Repair Service

Phone 426-4997

Most makes and models
Appliances - Refrigeration
Air Conditioners

Residential - Commercial x1

G. L. WELCH DECORATING CO.
—Licensed and insured. Interior and exterior. Commercial and residential painting. Work guaranteed. 498-2847 Gregory, Mich. x46

FOR SALE—7 hp. electric tractor, 1968 garden Mark mower, snow-blade and tire chains. Best offer takes. Call 475-2832 after 6 p.m. x47

FAST FOOD MANAGER and helpers. Evenings. No experience necessary. Will train. Call 971-0700 Ext. 103 between 6-10 p.m. only. 47 Thursday, May 13. x47

WANT ADS

COMPLETE SANITATION SERVICE—Septic tanks cleaned and repaired. Licensed and bonded. Call anytime. Munith (517) 596-2948 or (517) 596-2116. x48

WANTED—Plaster patch work, brick work, also block work. Phone 475-7515, 218 E. North St. x48

TOP SOIL for sale. Ph. 475-7594. x48

CREATIVE BABYSITTING—in my home weekdays. Full or part-time. 475-7480. x47

NEW ARRIVAL at JIFFY MARKET

2 CYCO FUEL

Specialized, Patented Fuel for all 2-cycle engines.

At Lowest Retail Price in Chelsea Area. x47

LEVI'S

BELL BOTTOMS

Good Selection

at

DANCER'S

THE LITTLE

FLOWER SHOP

3451 Waltrous Rd., Chelsea

Phone GR 5-8508

Flowers, corsages, arrangements and plants.

Weddings and funerals. x47tf

NOTICE—Jack & Son Barber Shop will be closed May 17 through May 23. x47

Ann Arbor Women's City Club

ANTIQUE

SHOW & SALE

May 20, 21 & 22

Luncheon and Dinner

Show Hours: Noon until ten

Sat. noon until six

Free Parking

Donation, \$2.00 - Pre-sale, \$1.50

OPEN TO THE PUBLIC

1830 Washtenaw Avenue

Ann Arbor, Michigan x47

FOR SALE—Bethany tent trailer, sleeps six, good condition. 475-2888. x48

WANT ADS

PIANOS TUNED—Players and reed organs rebuilt. D. Harvey, 1201 Shady Lane, Tecumseh. 423-8045 after 4 p.m. x47

FOR SALE—2-bedroom, 12x60, mobile home, AMC, 1969, excellent condition. Phone 475-7415 after 5 p.m. x47

WANTED—Gardens to plow. Phone 475-8759 after 4 p.m. x47

ARTISTS! ATTENTION! Flushing Art Show, Saturday, June 5, 1971. Enter now. For applications contact Mrs. Jack St. John, 2301 Seymour Rd., Flushing, Mich. 48433. 313-659-9866 x47

WANTED TO RENT—Cottage or home for summer and early fall, for family of 6. Please call 662-5442. x47

FOR SALE—Deca electric guitar used one month. Also, size 9E football shoes, only used once. Phone 663-8228. x46tf

HARADISE COVE Travel Trailer Resort. Open House May 15-16. Register for free vacation. Refreshments. 123 sites, clubhouse, playgrounds, bathhouses. Swim, fish, boat. Hook-up available. Beautiful Sand Lake Shores. Via US-131, West 3/4 mile at Sand Lake, MI. x47

FOR SALE—32 acres on black-top road with stream and trout pond within 10 minutes of city of Alpena. Ideal for subdivision or trailer court, price \$15,000, terms. Lake cottage in excellent fishing and hunting area, \$7,500, terms. Equipped restaurant, Hillman, Michigan, good location. Total price \$15,000, terms. Buy from owner. Norman Smith, Hillman, Michigan Tel. 120-742-4337. x48

GIRLS CLEANING CREW—Call after 5:30 p.m., 475-6101 or 475-2462. x48

Business Opportunity

We are looking for a particular person, man or woman or couple who want a dignified profitable business. No gimmicks—No Vending. We market a quality product through fine shops and stores which is not only a necessity but in great demand. We are a proven company with many successful distributors. Must have a good reputation—be able to invest \$4,000 to \$15,000 for inventory. We provide complete training and have a guaranteed buy back agreement and investment return. Each area is exclusive and protected. For information, write Mr. Charles, P.O. Box 15-561, Salt Lake City, Utah 84115 or call 801-486-0920. x47

NEW ARRIVAL
at
JIFFY MARKET

2 CYCO FUEL

Specialized, Patented Fuel for all 2-cycle engines.

At Lowest Retail Price in Chelsea Area. x47

WANT ADS

FOR SALE—Window air conditioner, 9,500 btu, good condition. Phone 475-8148. x48

BABYSITTING by elderly woman in her own country home, days, Phone 475-8033 anytime. x47

TOP SOIL, railroad ties, for sale. 475-8211, after 3 p.m. x49

SHINGLE ROOFING, all types, barns, and houses. Arnie Rae, 662-1753. x52

DOMESTIC refrigerator-freezer garbage disposer service. Call Bill. 426-8314. x47

NEW ARRIVAL at JIFFY MARKET

2 CYCO FUEL

Specialized, Patented Fuel for all 2-cycle engines.

At Lowest Retail Price in Chelsea Area. x47

FRISINGER

REALTORS

Chelsea Area Homes

3-BEDROOM ranch home, fenced-in back yard. Village of Chelsea. Priced to sell at \$20,000.

NEW LISTING—Early American 3-bedroom, modern large kitchen, dining room, 2-car garage, black-top drive, excellent location. This home has been featured on the Chelsea home tour.

NEW LISTING—117-acre farm, remodeled 3-bedroom, Early American home, excellent location, frontage on 4 roads. Just outside of Manchester.

NEW LISTING—13.8 acres, 5-bedroom remodeled home, beautiful view, excellent rolling land with pine trees, new barn. Chelsea schools.

2 NEW LAKE LISTINGS—1 at Sugar Loaf Lake and 1 at Joslin Lake.

3-BEDROOM 2-year-old ranch in the Village of Chelsea. Fireplace and attached garage.

18225 CAYANAUGH Lake Rd. Excellent decoration, nice hilltop setting, 2 miles west of Chelsea. Priced to sell, \$32,500.

4 ACRES located on Old US-12, \$7,000.

10-ACRE building sites to choose from.

Frisinger Realtors

CHELSEA - 475-8681

Evenings Call

George Frisinger, 475-2903

Herman Koehn, 475-2613

Paul Frisinger, 475-2621

Member Multiple Listing System x47tf

REPAIR WORK

DONE

Garden tractors, lawn mowers, roto tillers, air-cooled engines. Major tune-ups to overhauls.

Duane Bollinger

Phone 475-7383 x50

REAL ESTATE

84 ACRES with better than average two-story 3-bedroom home. 2 small barns. Newly fenced.

4-ACRE CORRAL, white wood fence in front. Good income from land rental. 9644 Lee Rd., just south of Grass Lake. \$56,000.

Willis Real Estate

(517) 522-8481

FOR SALE—1953 Chevy pickup. Good running condition. \$100. 426-3185. x47

FOR SALE—2-bedroom, 8'x40', 1955 Champion house trailer. In good condition. Phone 475-2921 after 5:30 p.m. x47

FLOAT BOAT, 8'x20', new canopy, excellent condition. Phone 475-2751 after 6:30 p.m. x47

ANTIQUES MARKET Sunday, May 16, Ann Arbor, Michigan—130 dealer spaces, antiques only. Lots of furniture, 11 a.m. to 6 p.m. rain or shine, sheltered area. Farmers Market, Detroit Street, Market Town Area. Free admission. Free parking. x47

WANTED—WSI swimming instructors for Chelsea summer recreation program. For information phone 475-7068 after 6 p.m. x47tf

FOR SALE—Walnut pipe rack, smoking stand (see new), Skih hand saw floor stand with guides (no saw), some misc. items, few antiques, toys, children and adult clothing. 221 E. Middle St., Chelsea. Phone 475-7087. x47

FOR SALE—Large refrigerator with freezer, 20-gal. trailer, water heater, 1 ton air conditioner. Many other items including all fixtures. Must vacate by May 31. Ralph's Card Room, 107 W. Middle. x47

GUITAR INSTRUCTION. Classical, folk, pop. Emphasis on the new. Only \$3.50 for 1/2 hour. Phone 475-1120. x47tf

WANTED TO RENT—2 or 3-bedroom house preferably in the Crooked Lake or Cavanaugh Lake area. Call collect (616) 467-3873. x52

APACHE HARD-TO-P CAMPER for sale. May be seen at 627 Flanders St. x47tf

WANT ADS

AUCTION—Unadilla Presbyterian church June 5, at 1 p.m. Also, bake sale. For collection of articles phone 851-8741 or 498-2589. x49

FURNISHED APARTMENT for rent—3 rooms and bath, downtown Chelsea. Couple preferred. \$120 per month, plus deposit. References required. 475-7541. x47

LOST DOG—Sable and white male collie. Answers to name Shane. Child's pet. Please call Gregory 498-2432. x47

FOR SALE—Armstrong flute. Oris. Cost \$162. Used 1 school year, excellent condition, \$90. Phone 475-8825. x48

FOR SALE—Electric exercise, two speed, and electric massage belt, antique dresser with a round mirror, antique combination bookcase and desk. Phone (313) 498-2816. x48

GARAGE SALE—Saturday, May 15, starting at 9 a.m., 47 Chestnut Dr. We are moving and everything must go. All prices reduced. Umbrella tent, kitchen table, desk, dishes and many other household items. x47

FOR SALE—AKC poodle pups, 20100 Old US-12. Phone 475-8784. x48

RUMMAGE SALE—Spaulding for Children Auxiliary, township hall, Friday, May 21, 9 a.m. to 9 p.m. Hall open Thursday, May 20, from 9 a.m. to 5 p.m. to receive rummage. For more information call 475-2781 or 475-4866. x45

FOR SALE—Dining room set, living room set, television, beds, wardrobe. 475-8587. x48

'69 KARMANN GHIA for immediate sale. 475-8172 after 5 p.m. x47

FOR SALE—Conn trombone. Good for beginner. 475-6052. x47

BOAT TRAILER for sale. Slightly used. Carries 600-lb. load. Call GR 5-4981 after 6 p.m. x47

FOR SALE—Nice large building lot on Bear Lake, west of Grayling. Phone 475-2233. x47

FOR SALE—14 inch plow, Ford 3-point hitch. Ph. 479-0761. x47

WANTED—Experienced cosmetologist needed. Excellent working conditions. Phone 475-2769 after 5 p.m. x47

1968 SHASTA HOUSE TRAILER for sale—21', fully self-contained, in like new condition. Reese hitch and electric brake control complete. \$2,150. Ph. 479-6821. x47

FOR SALE—Garden tractor, 5 attachments, \$75; assortment of hand garden tools; Burk pump and tank, \$85. Two 7.50x15 tires, \$5 each. Set tire chains, \$7. Call Friday or Saturday, 10 a.m. to 5 p.m., 475-2242. x47

FOR SALE—1950 Ford 1/2-ton pickup, good condition. New aluminum garage door, 7'x16', everything needed to hang it. 1963 engine, 352 cu. in. 2 barrel carb. Phone 475-5221. After 6 p.m., 475-7365. x47

RUMMAGE & GARAGE SALE—5 dressers, 1 vanity, misc. furniture, toys and books, '62 Falcon wagon, flower pots and vases for Decoration Day. 501 Territorial, Manchester, Mich. 1 block south of the Ford garage. All day May 13th and 14th, 9 a.m. to 6 p.m. x47

FOR SALE—1979 El Dorado 49 truck camper. Phone 475-7784. x49

FOR SALE—German Shepherd puppies of good stock. Six weeks old, \$35. Phone Manchester, 423-8036. x47

FOR SALE—Duncan Phyle dining room set, china cabinet, buffet, table, 6 chairs, \$300. Sofa bed, \$75. Call 475-7836. x48

HORSEBACK RIDING at the Sharon Hills Ranch after 5 and week-ends. Ph. 428-9452. x47

FOR SALE—Electric stove and refrigerator. Both for \$35. Call 475-5782. x48

137 OWEN CT.—3-bedroom ranch, on quiet court, near elementary school. Reasonably priced. Call Don Gray, 761-2361. Paige Real Estate, 800 E. Stadium, 761-2910. x47

FOR SALE—Five string banjo and case. Never been used. 475-8569. x48

FOR SALE—1964 Valiant, 2-door sedan, runs good, \$275. Ph. 475-8253. x47

SALES—High commissioned; wigs, furs and cosmetics. Own your own business, no investment required. Please call 668-9060. x49

BABY-SITTING JOB wanted by high school girl during summer months. Ph. 475-8431. x49

GARAGE SALE—Friday, 10 a.m. to 7 p.m. 527 W. Middle St. x47

THANK YOU

We wish to thank relatives, friends, neighbors, Chelsea Fire Department, and the Burghardt Funeral Home for expressions of sympathy extended to us before and after the death of our mother and grandmother. A special thanks to Pastor Morris for his comforting words and help. The family of Armand Schiller.

THANK YOU

The family of Carl Lake wishes to thank all who sent cards, flowers, and letters to them at the time of his death. Mrs. Juanita Lake. Mr. and Mrs. Clarence Lake.

THANK YOU

It is with sincere appreciation that I wish to thank all the good friends, neighbors and relatives who by their acts of kindness and sympathy helped so much during the illness and recent death of my beloved husband. May God bless you all. Mrs. Vern (Lila) List.

THANK YOU

A hearty thanks to all those who donated and bought at our rummage sale. Our husbands thank you, our children thank you, and we thank you. Chelsea Co-operative Nursery.

408 SIGN PETITION

Martin Miller announced this past week that 408 signatures were sent in to Lansing recently on a petition to reduce Senior Citizens tax assessments to 30 percent.

Jaycees, Auxiliary Among Top

(Continued from page one)

ed the president's "Medal of Devotion."

A second-place award was received for outstanding service in the area of Jaycee assistance for the Auxiliary's work on the Chelsea Jaycee sponsored State Jaycee Basketball tournament.

New state Auxiliary officers were elected and installed at the Saturday meeting and luncheon. President for the coming year is Mrs. Pat Schoenfeld of Swartz Creek, while Mrs. Carol Meil of Stanton is executive vice-president, Mrs. Kathy Miller of Marshall is secretary, and Mrs. Louise Eible of Flint will be treasurer.

At the close of the meeting, president, Mrs. Anne Steinaway was presented with a check to be used to purchase a hutch cabinet for herself. The money was donated by the 188 local Auxiliaries in the state. Her executive board presented her with a check to purchase a pewter tea service of her choice. In addition to a few garlands designed to lighten the sol-

Marine Corps League Meeting Tuesday

Marine Corps League will hold a question and answer meeting at 8 p.m. May 18 at the American Legion Hall in Manchester. Former Marines from the Chelsea-Manchester area are invited to attend.

Team on the agenda will include discussion of the Marine Corps League and its purpose, the Young Marines, veteran services, and veteran benefits and their availability.

TODAY'S THOUGHT

By LOUIS BURGHARDT

"The old man trusts wholly in slow contrivance and gradual progression; the youth expects to force his way by genius, vigor and precipitance. The old man pays regard to riches, and the youth reverences virtue. The old man deifies prudence; the youth commits himself to magnanimity and chance. The young man, who intends no ill, believes that none is intended, and therefore acts with openness and candor; but his father, having suffered the injuries of fraud, is impelled to suspect, and too often allured to practice it. Age looks with anger on the temerity of youth, and youth with contempt on the scrupulosity of age" . . . written by Samuel Johnson over 200 years ago.

</



TOP AWARD FOR CHELSEA JAYCETTES: Mrs. Arthur Steinaway, retiring state Jaycee Auxiliary president, presented Mrs. Robert Updegraff, president of the Chelsea Jaycee Auxiliary, with the first-place award in their population division for the Chelsea Jayettes, at the annual Michigan

Jaycee State Convention held this past week-end in Grand Rapids. Chelsea Jayettes also received second place recognition for their work on Jaycee assistance projects—especially their work during the Chelsea Jaycee sponsored State Basketball tournament.



HONORED BY KIDNEY FOUNDATION: Mrs. Art (Anne) Steinaway, retiring state president of the Michigan Jaycee Auxiliary, was awarded the above plaque by the Michigan Kidney Foundation for the work of Michigan Jayettes to provide kidney machines for those within the state. Through the collection of Betty Crocker Coupons the Jayettes have provided 23 machines to date.

For And About Teenagers



ALL OF MY FRIENDS HAVE GIRLFRIENDS BUT I DON'T...



THE WEEK'S LETTER:

"I am 13 years old and I am feeling depressed. All of my friends have girl friends but I don't. I am not very handsome, though. I guess I am just jealous or something. I am bashful, too."

OUR REPLY: Take your problems one at a time. You cannot cope with the others until you do something about the most important one—feeling depressed. You cannot look your best nor put your best face forward when you're feeling sour on the whole world. Try being a happy guy, even if you don't feel that way. Wear a smile on your face and

try to make friends with the whole world. You won't, you can't—but you'll find fun in trying. If you can't change your looks, look your best—but always wear that smile. Even if you were handsome, you would have few friends if you were not a friendly person. Physical appearance is helpful, but if the REAL YOU is a nice and friendly person, friends are sure to come your way.

If you have a teen-age problem you want to have discussed or an observation to make, address your letter to "For and About Teen-Agers," Community and Suburban Press Service, in care of this newspaper.

An eye for good taste!

My, Junior sure goes for a t-a-l-l glassful of our better-tasting milk which gives him plenty of pep and keeps him mentally alert! Grown-ups, as well as youngsters, appreciate the nourishing goodness . . . flavorful vitality—that makes our milk . . . yours!

WEINBERG DAIRY
Phone GR 5-5771

School State Aid Funds Coming . . . So They Say

Representative Thomas Sharpe announced this past week that \$115,890 will be paid to the Chelsea School District for the June 1 state aid payment. He added that \$9,734 of federal monies will be paid to the school district under Title I.

Chelsea Schools Business Manager Fred Mills claimed that the Title I payment has been received, although he had no idea when the state payment would be made. State aid payments have been slightly delinquent, as the schools have only received 60 percent of the payment for the month of February, while the remaining 40 percent, a total close to \$50,000, has not yet been received. Payments for April were paid up by May 1, although about \$50,000 or 40 percent was unpaid for quite a while.

Mills claimed the state aid payment for June should come by the end of June, although he had no idea when the delinquent February payment would be made.

Fifty-five percent of the world's merchant fleet can reach Michigan harbors via the St. Lawrence Seaway.



MAUSOLEUMS ★ MONUMENTS
BRONZE TABLETS ★ MARKERS

BECKER MEMORIALS

6033 Jackson Road
ANN ARBOR, MICHIGAN

High School Honor Roll

May 4, 1971

GRADE 12

Theda Allen, Pamela Arnett, Virginia Ball, Connie Balogh, John Bassett, Charles Belser, Cathy Benjamin, John Bennett, Michael Bentley, Susan Blaess, Stephen Bott, Douglass Brink, Eileen Bristle, Raylene Buckingham, Elaine Burnett, Jeffrey Bust, George Cameron, Barbara Cavender, Bruce Clark (all A), Laura Clemans, Tonya Clemons, Jerry Collins, Janet Cross, John Dettling, Robert Dickson, Michael Eisemann, Michael Erskine, Martha Ewald (all A), Mary Flintoft, Milton French, Mark Fuhrmann, Mary Kay Gaken, Dorothy Gauss, Michael Giffin, Lawrence Gorton, Jandie Guenther (all A), Kathryn Hafner (all A), Monica Harat, Alfretha Harrison, Jane Haselschwardt, Mitchell Heard, Howard Hercules, Lewis Herr, David Heydlauff, Sharon Heydlauff, Richard Howard, Carol Huelt (all A), Richard Jennings, Shelley Johnson, Jill Kipfmiller (all A), Laurel Lancaster, Jane Mann (all A), Jackie McClain (all A), John McClear, John Merkel, Gordon Morgan, Jo Nevill, Jeanette Newcome, Tina Orbring, Pamela Parnell, Jeffrey Parsons, Norman Passow, Lisa Peppers, Linda Picklesimer, Deborah Pierson, Patrick Pluck, Michael Powers, Susan Rasmussen (all A), Karen Reynolds, Dale Robbins, Neil Rothfuss, John Sacher, Denise Salyer, Robert Schaefer, Joan Schmidt, James Schnaidt, Wesley Schulz (all A), Rebecca Smith (all A), Steven Smith, William Stahl, Susan Stock, LuAnn Strieter, Mary Tandy, Brad Tompkins, Howard Treddo, Rebecca Van Riper, Edwin Wade, Carol Weir, Gayle Winans (all A), James Wojcicki, Richard Worden, Joan Yocum, Patricia Young (all A).

GRADE 11—

Kim Aronson, Debra Barker, Dwight Bolanowski, Mary Jo Bott, Randy Brier, Melvin Buss, Cynthia Chandler, Catherine Clark (all A), Marie Clouse, Garry Collins, Mark Collins, Susan Dirlam (all A), Barbara Duerr, Patricia Eisele, Terri Eisemann, Daniel Gaunt (all A), Greta Graham, Judith Grau, Houston Hardy, Jeanne Haselschwardt (all A), Michael Hertel (all A), Rudy Hertlein, Daniel Hoover, Kathy Hopkins, Larry Hopkins, Bonnie Hosier, Thomas Hubert, Karin Hume, Karen Jones, Marsha Johnson, Larry Jones, Karlene Kargel, Janice King, Edwin Koenigter, Dennis Landwehr, Charles Lane (all A), John Lantis, Kathy Leach, Thomas Lixey, Janice McGaw (all A), Thomas McKernan, Daniel Miller, Katherine Murray, Glen Musolf, Stephanie Nelson, Mary Niehaus, Greg Osborne, Vicki Padgham, Joan Platt, Rita Picklesimer, Pat Poertner, David Porath, Laurel Prinsing, Chris Rasmussen, Michael Reilly, Cynthia Reynolds, Gayle Robbins, Michael Rosbach, Lowene Rowe, Bob Rutherford, Karen Schafer (all A), Kathryn Schaefer (all A), Janice Schenk, Jon Schenk, Janice Schramm, Danny Schuelke, Randall Seitz, Janet Sibbey, Betty Snyder (all A), Michael Spence, Todd Sprague, Robert Stoffer, Martin Straub (all A), Floyd Tanner, Thomas Thornton, Douglas VanGorder, Tim VanSlambrouck,

Ruth Verchereau, Norbert Weber, Wayne Welton, Thomas Winans, Robert Wojcicki, Skeets Worden, Mark Wright.

GRADE 10—

Debra Akin, Stephanie Aldrich, Craig Alter, Patricia Ball, Florence Beach, Elizabeth Belser (all A), Judith Blaess, Beverly Bott, Cynthia Boyer, Barbara Boyan, Phyllis Buss (all A), Kenneth Buxton, Jennell Caudill, Donna Clark, Terry Coley, Jeffrey Daniels, Jane Dickelman, Carole Diettle, Eileen Evans (all A), Carol Ewald, Carol Fairbrother (all A), Lee Ferguson, John Fitzsimmons, Thomas Forner, Cheryl French, Gilda Gillespie, Jerry Hafner, Dennis Huehl, Stephen Keiser, Peggy Kraai, Tim Lancaster, Debra Lyons, John Mann, Sandra Niles, Debra Norris, Randall Norton, Steven Norton, Maralyn Peppers, Christopher Phinney, Alicia Pierson, Bonnie Powers, Connie Salyer, Norman Schaefer (all A), Kenneth Schiller, Phyllis Shadoan, Stephen Siebert, Tom Skittenhelm, Richard Stewart, Karen Sullivan (all A), Rebecca Tibb, William Tite, Robin Vervey, Janet Wackenhut, Donna Wall, Mary Wood (all A), Steven Worden, John Young (all A).

GRADE 9—

Jane Belser, Neil Bollinger, John Brauningner, Vicki Burnett, Jane Buxton, Paul Case, Debra Clark, Richard Clark, Ronald Clark, Charles Clemons, Ronald Collins, Craig Coltre, Christine Duerr, Nancy German, Howard Haselschwardt, Phyllis Jedele, Vickie Joseph, Pat Knickerbocker, Dale Koch, Jennifer Lane (all A), David Lauhon, Jon Lewis (all A), Karen Lingerfelt, Michelle McClear, Ann Markel, Michael Nadeau, Denise Nutt, Deborah Orlovski, Susan Ottoman, Margery Parsons, Janice Powers, Marlene Roney, Donna Reynolds, Pamela Risner, Darlene Robbins, Diane Robbins, Lynne Roskowski, Kathryn Rybka, Gary Sanderson, Gena Shoemaker, Julie Smith, Jeffery Sprague, Barbara Stahl, Leona Stewart, Susan Stoner (all A), Stephen Straub, Jennifer Tandy, Roben Terns, Jolly VanSlambrouck, Mary Verchereau.

4-H Clubs

TERRIFIC TAILORS

Terrific Tailors 4-H club met Saturday, May 8. Election of officers was held. President for the coming year is Laura DeSorge, while Kathy Pierce is vice-president, Vicki Koch is secretary, and Diane Luick is treasurer. Historian for the coming year is Angie Merkel, and Cindy Pierce is recreational chairman.

Hostesses were picked for the summer meeting. Mrs. Smith from Horseshoe Lake showed some arts and crafts that the girls could make for a 4-H project.

Refreshments were served by the hostesses, Beth McCarthy. Next meeting is to be June 5, at the Lima Township Hall at 1:30 p.m.

Michigan has a highly diversified skilled labor force, as shown by the fact that skilled labor in Michigan mans more than 350 different types of industry.



TOM EISELE, right, 148 Van Buren, was third-place winner in the March "Salesman-of-the-Month" contest sponsored by North American Rockwell. Eisele is a salesman for the Automotive Products Division's Mechanical Spring Plant in

Chelsea. Above, John S. Rudd, president of North American Rockwell's Automotive Products Division, presented Eisele with his citation. Division headquarters are in Detroit.

ACSLD Providing Help for Those with Learning Difficulty

A fund raising, and "publicizing" campaign has been started by a small, but growing group of area citizens to bring to the attention of the public an organization known as the "Association for Children with Social and Learning Difficulties," better known as ACSLD.

Purpose of the organization is to assist with the educational development of those children within the communities of Washtenaw county who are of average or above average intelligence who are underachieving to the degree that it causes problems in the classroom. They may be perceptually handicapped or because their nervous systems haven't developed properly, they may not have matured physiologically. Sometimes they may have emotional problems connected with their learning difficulties, but they are not mentally retarded or mentally ill.

Two Chelsea school-age boys have been enrolled in ACSLD's program, and their parents, and two other Chelsea teachers are members of the organization. Mrs. Larry (Nancy) Oswald, teacher of special education at Chelsea High school, and Miss Clare Char-

les, reading teacher in the elementary schools, along with the parents of the two boys belong to the group.

Among the group's many programs is special tutoring on a one-to-one basis of those children who are having difficulties in the classrooms. Tutors are students at the University of Michigan and Eastern Michigan University, who may visit a child either at home, or at school as much as three times a week. Presently, with the end of the school year at both Universities, the program has come to a halt in the Chelsea community, but it is hoped to start up again as soon as the summer sessions get underway.

The group has recently obtained the use of a large home on Miller Rd. in Ann Arbor township which they hope to convert into a service center. Purpose of the center would be to provide such services as academic tutoring, teen-age group meetings, sibling counseling sessions, and family counseling sessions, as well as providing an adult and children's library, and house all ACSLD files and business offices. A social drop-in center will also be provided.

(Any person who would like further information concerning the organization is urged to contact either Mrs. R. V. Worden, or Mrs. James Schnaidt.

HITCHINGHAM ELECTRIC

PHONE (313) 475-1100

449 CHELSEA-DEXTER RD.

CHELSEA, MICH.

RESIDENTIAL - COMMERCIAL - INDUSTRIAL
LIGHTING and POWER

here's why it pays to deal with the savings and loan SPECIALISTS

Our primary business is savings and home loans. We have been doing these two things for eighty one years, so we do them well. Because we have specialized, we have been able to refine our techniques to the point where we offer the broadest, most sophisticated savings and loan services available in Washtenaw County.

SAVINGS

We have consistently paid the highest rates on passbook savings, so your money builds faster at Ann Arbor "FED" than it does at banks. This can be especially significant when you have a long range savings program.

Too, we offer more savings opportunities: passbook savings, and hundreds of perpetual money savings plans. With the perpetual money savings plans, you can save lump sums of twenty, forty, fifty thousand dollars and in addition have monthly income for your lifetime and for

your children thereafter during their lifetime. We have college education savings plans, retirement plans, home savings plans and at the "FED" you reach your savings goals sooner because your money earns more.

MORTGAGES

Because savings dollars go primarily into home loans at the "FED", we have more money available for mortgages. Ann Arbor "FED" is always the first place to go for a mortgage whether you're buying or refinancing a home. We offer conventional loans, HUD (FHA) and VA home loans.

We also have HomeSav plans. You can buy your home and a ten, twenty or thirty thousand dollar savings nestegg at the same time. Ask our money managers about these plans when you are arranging your mortgage.

SAFETY

At the "FED" your capital is completely safe. It never shrinks as some investments do. It just grows and grows. Your savings account is insured to \$20,000 by the FDIC and backed with solid local mortgages. We make it easy to save. You can make your deposits easily and safely by mail. Just send us the coupon below and we'll send you a supply of save-by-mailers and details on our save-by-mail program.

Name _____
Street _____
City _____
State _____ Zip _____
Send me details on your save-by-mail plan and how I can earn highest interest rates.

ANN ARBOR FEDERAL SAVINGS

the savings and loan specialists

Liberty at Division, West Stadium at Pauline,
Huron Parkway at Platt, Plymouth at Nixon.

AAFE

Member Federal Home Loan Bank System & Federal Savings and Loan Insurance Corporation

Co-Op Nursery Elects Officers

Chelsea Co-operative Nursery elected a new board of officers at their last general meeting, Thursday, May 6. Officers for the coming year are: Mrs. Dave Martin, president; Mrs. James Finn, vice-president; Mrs. Fred Mills, secretary; Mrs. Tobias Peterson, treasurer; Mrs. William Ackley, publicity; Mrs. William Robertson, three-year-old area representative; Mrs. Carl Robinson, four-year-old area representative; and Mrs. Dennis Mull, membership chairman.

Cooperative Nursery officials announced that applications are now being taken for the coming year. Classes are filling up fast. To register a three- or four-year-old, parents are urged to call Mrs. Dennis Mull, 4411, or Mrs. Carl Robinson, 426-4125.

VFW Auxiliary Makes Plans for Poppy Day Sale

Regular meeting of the VFW Auxiliary was held Monday, May 10 in the Rebekah Hall with eight members present. Annual yearly reports were given by the chairman present.

Buddy Poppy chairman, Lucy Platt reported that May 29 is the day for the annual poppy sales. She reminded all volunteers of their time to work.

Department of Michigan convention will be held in Kalamazoo, June 24 through 27. Delegates elected to attend are Eulalie Packard, Josephine Eresten, and Mary Kniss. Alternate delegates are Jeanne White, Lucy Platt, and Evelyn Bernice Schneider. President, Geraldine Klink will represent the Auxiliary at the convention.

Installation of officers will be Monday, June 17, in the Rebekah hall. Graf O'Hara Auxiliary of Ann Arbor will assist. Mrs. Harry B. White will be the installing officer.

Refreshment committee for the event will include all past presidents of Auxiliary No. 4076, who are headed by Lucy Platt.

May Social Party will be Monday, May 24, at the home of Nina Matthews. Committee will be Mary Kniss, chairman, assisted by Jeanne White, Iva Jean Fullerton, and Doris Knott.

Sunday, May 16 the Sixth District Convention will be held in Springfield. Those wishing to attend may contact President Geraldine Klink.

Home Economics Study Groups Calendar

- May 17—Whitmore Lake, Mrs. Ruby Ross, Barker Rd., Whitmore Lake.
- May 18—Fosdick, Mrs. Charles Doub, 6465 Moon Rd., Saline.
- May 18—York Extension, Louin Posserk, 335 Phillips, Milan.
- May 18—Rogers Corners, dinner out.
- May 19—Town and Country, Mrs. N. Aurand, 320 Marion Ct., Saline.
- May 19—North Lake, Mrs. Dale Lindemann, 11790 Island Lake Rd., Dexter.
- May 19—Delhi, Mrs. William Reule, 5216 Pratt Rd., Ann Arbor.



ENGAGED: Mr. and Mrs. James Gaken, 310 Pierce St., announce the engagement of their daughter, Mary Kay, to John Perry, son of Mr. and Mrs. John Perry, 500 W. Middle St. The bride-elect will graduate from Chelsea High school in June. She is presently employed at Groves Store. Her fiancé is a 1970 Chelsea High school graduate, and is attending Washburn Community College, studying electronics. He also is employed by Groves Store. No wedding date has been set yet.

Mother-Daughter Banquet Held By Legion Auxiliary

American Legion Home at Canvaugh Lake was the setting for the Mother-Daughter Banquet of the Legion Auxiliary held Tuesday, May 4. Thirty-one members and guests were present.

Artificial flowers decorated the tables, with sewing notions tucked in among the flowers. The sewing notions were presented to Mrs. Velma Door, oldest mother present. Mrs. Betsy Hackworth, youngest mother present, Mrs. Sandy Weber, mother with most daughters present, and Mrs. Therese Doll, the youngest grandmother present.

The group gathered for a potluck supper, followed by entertainment by Robert Geer and his two children, from Dexter. The Geers presented a skit about clowns and Snoopy the dog.

Regular meeting was held at 8 p.m., for 16 members and four guests.

Plans were discussed for the Poppy sale to be held on May 28. All members are asked to donate an hour or more to their time to sell the poppies.

Discussion was held on the Coffee Hour to be held at the Veterans Administration Hospital in Ann Arbor on June 12, and also for the party at the Ypsilanti State Hospital on June 8.

District President, Mrs. Dorothy Hill, was present. She addressed the group briefly, and was then presented with a gift from the Auxiliary. Mrs. Ruth Christwell, district treasurer, who was also present, was also given a gift by the Auxiliary.

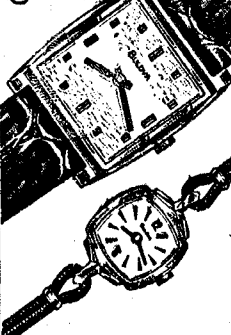
Next meeting will be June 1, at the Legion Home, at 8:30 p.m. This will be a Dues Luncheon.

SPRINGTIME IS CUPBOARD CLEAN-OUT TIME

Spring's a good time for cupboard cleanout and reorganization. Give front space to those cans and packages that have been there longest. Use up the old to make way for new supplies. A pound or two of ground beef, browned, will make a dinner in combination with many canned and packaged foods.



BULOVA
...the well-timed Graduation gift



We have a choice collection of modestly priced Bulova watches, timed for Graduation.

Illustrated: Two new 17 jewel models, only \$35.

WINANS JEWELRY

Club and Social Activities

MODERN MOTHERS

Modern Mothers Child Study Club met Tuesday evening, May 11, at the home of Mrs. Richard Harvey. Mrs. Walter Brown was co-hostess for the evening.

Election and installation of new officers were held. Officers for the coming year are Mrs. Paul Weber, president; Mrs. Vern Otto, first vice-president; Mrs. Max Plank, second vice-president; Mrs. Tom Dunlap, secretary; Mrs. Robert Riemenschneider, treasurer; and Mrs. Warren Porath, auditor-parliamentarian.

An installation dinner for husbands and wives will be held Tuesday, May 25 at Bill Cones in Jackson.

KINDER KLUB

Kinder Klub Child Study Club met Tuesday, May 11 at the home of Mrs. Ron Eder. Following the regular business meeting, the annual reports were given. Also, the several members who attended the Spring Planning Meeting in St. Clair Shores on April 24 presented their report.

The evening was concluded with the installation of officers for the coming 1971-72 year. Past president, Mrs. Fred Hoffman, was installing officer. New officers are Mrs. Justice Marshall, president; Mrs. Duane Downer, first vice-president; Mrs. Edson Whitaker, second vice-president; Mrs. James Krichbaum, secretary; Mrs. Tony Bowen, treasurer; Mrs. Dan Ewald, auditor-parliamentarian; and Mrs. Donald Proctor, historian.

Refreshments were served by Mrs. Donald Proctor. Plans were completed for the spring dinner, which has been changed to Thursday, May 27. It will be held at Bill Cones Restaurant in Jackson. Other plans include an outing to the Kellogg factory in Battle Creek for members and their children on June 16.

Senior Citizen Activities

Eighteen members of the Chelsea Senior Citizens gathered at the Korner House for a social evening of cards Sunday, May 6. Refreshments were served by Leona Evans and her committee for the evening.

May 13, at 2:30 p.m. the Senior Citizens have been invited to South School where they will be entertained by the fourth graders. All Senior Citizens are urged to attend this event.

Monthly birthday potluck supper will be held May 20, at 6:30 p.m. at the Korner House. All members whose birthdays occur during May are urged to attend. Chairman for the dinner is Mrs. Gladys Klump, Mrs. Velma Dorr and committee.

Nomination and election of officers for the coming year will be held at the May 25 regular business meeting.



CHARTER MEMBERS of the Woman's Club of Chelsea, who celebrated the Club's 40th anniversary Tuesday evening, May 11, at Schuler's restaurant in Jackson are, from left, Mrs. Sidney Schenk, Mrs. A. W. Wilkinson, Mrs. Charles Me-

Woman's Club Observes 40th Anniversary of Serving Chelsea

Chelsea Woman's Club celebrated their 40th anniversary at their final meeting of the year, Tuesday evening, May 13. The Ruby Anniversary celebration was held at Schuler's Jackson restaurant, with 50 members and guests in attendance.

Tables decorated in red and white, with flower centerpieces, were in keeping with the "ruby" theme, while club programs for the coming year, which were given to each member, were bound in red also.

Special music of old and well-loved themes by the members of the club, was played during the event.

Five charter members still belonging to the Woman's Club, Mrs. Matilda Hinderer, Mrs. Alma Meserv, Mrs. Ruth Schenk, Mrs. Rena Walworth, and Mrs. Ruth Wilkinson, were each presented with a red flower upon arrival.

Following the dinner, there was a program which was introduced by Mrs. Jean Eaton, who gave a brief review of the Club's beginnings. She reminded members that although they had started as a child study club in 1931, changing to the Woman's Club of Chelsea in 1948, they had never changed their object, which was to study for the betterment of home and community.

Among the long list of the many accomplishments of the club over the years are: the establishment of the public library in Chelsea in February 1932, and their financial assistance to the library ever since; their interest in helping the poor, which in 1951 became formalized in the Chelsea Social Service; their interest in recreation, which prompted them

to start the Girl Scout program in Chelsea, and to work for summer recreation programs for boys and girls; their war work, when they baked and shipped 27,666 cookies to Percy Jones and other military hospitals, in a time when sugar was rationed; their assistance in starting two other Child Study Clubs; their success in finally organizing a Chelsea Community Chest; and their contributions of money to many endeavors of other organizations.

Following this brief review of some of the society's activities of the past, a citation for her contributions to the club was read and presented to each of the charter members, with a gift commemorating the 40th anniversary.

Hazel Spaulding called the roll of the 27 living past presidents of the club, 18 of whom were present, inviting them to say a few words.

Many responded with reminiscences of past work or fun and some messages were read from those unable to attend.

Concluding remarks were made by Mrs. Ruby Strieter, newest past president, who handed the gavel over to newly-elected president, Mrs. Carolyn Williams.

Mrs. Leah Smith distributed copies of the history of the club's first 40 years to all active and associate members. All arrangements and decorations for the Anniversary Party were made by dinner committee members Marjorie Travis, Dorothy Soule, and Sylvia Ferguson. Fortieth Anniversary committee members, who planned and carried out the evening's program were Jean Eaton, Edith Hoffman, Leah Smith and Hazel Spaulding.

SCHOOL LUNCH MENU

Week of May 17-21

Monday, May 17—Poor boy sandwich, on hot dog buns, bowl of chili, fruit Jell-O, coffee cake, and milk.

Tuesday, May 18—Barbecue on buns, pickles, buttered corn, shoe-string potatoes, dessert, and milk.

Wednesday, May 19—Beef fricassée over noodles, buttered beans, bread and butter, pear delight, and milk.

Thursday, May 20—Submarine sandwich on hot dog buns, sauce, cole slaw, chips, dessert and milk.

Friday, May 21—Smoky links, potato salad, buttered peas, bread and butter, apple crisp, and milk.

There's a difference between water repellent finishes and waterproof ones. Water repellency means the fabric has been treated to make it resistant to wetting. But the fabric still allows air and body heat to pass through. Waterproof fabrics are completely sealed so that neither heat nor air can pass through. This makes them more uncomfortable to wear, but they are truly waterproof.

Magic Mirror Beauty Salon

Open Monday thru Friday

9 a.m. to 9 p.m.

Saturday, 8 a.m. to 3 p.m.

PHONE 665-0816

VILLAGE BEAUTY SALON

LORETTA PANNONE, Owner-Operator
CINDY - EULA - JANICE - SARA

PHONE 475-5421

OPEN MONDAY THRU SATURDAY

Evenings, Wednesday and Thursday



INVITATIONS or ANNOUNCEMENTS...

Let us provide you with the very finest printed or engraved invitations and announcements. Make certain that your wedding stationery is of top quality and conforms to correct social requirements. We can advise you on these important details.

THE CHELSEA STANDARD

Commercial Printing Department

GERANIUMS

35¢ ea.

3 for \$1.00



75¢ ea.

or \$8.00 doz.

POTTED PLANTS

Hardy Mums 50c ea.
Tuberous Begonias 75c, \$8.00 doz.

FLOWERING PLANTS

Flowering Plants 25c pak, 50c doz., \$3.00 flat

- ★ Petunias
- ★ Zinnias
- ★ Asters
- ★ Marigolds
- ★ Moss Rose
- ★ Phlox
- ★ Pansies
- ★ Salvia
- ★ Snapdragons
- ★ Carnations
- ★ Alyssum
- ★ Delphinium
- ★ Ageratum
- ★ Dwarf Dahlias

Patio Pots filled with your favorite selection of plants, \$10 up

Redwood Combination Boxes \$3.00

Cemetery Urns filled \$7.50 up

VEGETABLE PLANTS

Vegetable Plants 25c ea., 50c doz., \$3.00 flat

- ★ Tomatoes (Most popular varieties)
- ★ Peppers
- ★ Cabbage
- ★ Brussel Sprouts
- ★ Broccoli
- ★ Sweet Onions
- ★ Egg Plant
- ★ Sweet Potatoes
- ★ Cauliflower

Canadian Peat Moss, 6 cu. ft. \$5.50

Combination Pots Geraniums \$3.50 and up

OPEN EVERY DAY
from 8 a.m.

Free Local Delivery every day on all items except Annuals.

CHELSEA GREENHOUSE

MEMBER FTD — WE TELEGRAPH FLOWERS ANYWHERE

7010 LINGANE ROAD, CHELSEA

PHONE GR 9-6071

Community Calendar



Chelsea Rod and Gun Club tree planting at the club, Sunday, 7 a.m. Breakfast following.

Camera Club, May 13, 7:30 p.m., town hall. Mildred McFadden, "Sightseeing Through Canada." Members to bring flower pictures. Guests welcome.

Card Party at the Masonic Hall, on W. Middle, Saturday, May 15, 8 p.m.

Rogers Corners Farm Bureau, Friday, May 14, 8:30 p.m. at the home of Mr. and Mrs. Earl Huehl, 4100 Fletcher Rd.

Never Rest Farm Bureau, May 21, 8:30 p.m., Freedom Town Hall, guest speaker on drugs.

Inquiries regarding the Chelsea blood bank may be directed to Harold Jones in the event that Mrs. Dudley Holmes is unavailable, or to Mrs. Pauline McKenna, American Red Cross in Ann Arbor, 971-5300.

Chelsea High School Student Council sponsored Nickel Carnival, May 15, 12 to 5 p.m. in High school gym. Admission free. Dance follows.

VFW Auxiliary No. 4076 installation of officers will be 8 p.m. Monday, May 17 in Rebekah Hall.

Sunday, May 16, Sixth District Convention of VFW at Springport.

Rummage Sale, Spaulding for Children Auxiliary, Sylvan Township Hall, Friday, May 21, 9 a.m. to 9 p.m. Hall open Thursday, May 20, from 9 a.m. to 5 p.m. to receive rummage. For more information call 475-2781, or 475-4866.

South Dakota Club of Michigan, annual reunion picnic at Riverside Park Division of Plymouth Park, Plymouth, June 20, Gun-solly Mill Rd., Edward Haines Dr. All former residents are urged to attend. Phone 668-1710 or 476-4524 for further information.

Any boy or girl 14 years or older wishing to join M-Teens, to volunteer help at the Chelsea Medical Center, call Mrs. Betty Koch, or Mrs. Mary Turcot, 475-6761.

Action Group Yard Sale, Saturday, May 15, 316 McKinley, Chelsea. Phone 475-8466 or 475-8012 for pick-up.

Ladies Auxiliary of the VFW have been given permission to use Korner House for headquarters of Buddy Poppy sales, May 28, from 9 a.m. to 7 p.m.

Sewing every Tuesday afternoon at Korner House.

Esther Chapter of the Congregational church, Thursday, May 20, 8 p.m. Silent auction. Hostesses: Mrs. Lydia Penhallegon, and Miss Grace Penhallegon.

God's Willing Workers, Monday, May 24, 7 p.m., Chelsea Baptist church.

Young Homemakers, Thursday, May 27, 8 p.m., at the home of Beverly Beutler. Bring your "Secret Pal" gift. Election of officers will be held.

Rogers Corners Extension Study Group May 18. Leave promptly at 6:25 from the home of Marian Bristle for Tom's Grill in Jackson.

Special meeting of 4-H leaders and teen leaders, 8 p.m. Tuesday, May 11, at the Activities Center, Saline-Ann Arbor Rd. Purpose is to discuss the purchase of 20 acres of land adjacent to the present Activities Center.

Older Adult Group of the Methodist church, Saturday, May 15, 12:30 p.m. in the church social center. Bring own table service and dish to pass.

Chelsea Community Farm Bureau monthly meeting, May 13 at Sylvan Town Hall, at 8 p.m. Hosts are Mr. and Mrs. Emerson Lesser and Mr. and Mrs. Dorr Whitaker.

TOPS Club at library, Wednesday afternoon group, 12:30 p.m. For information call 426-4549. Tuesday evening group, 8 p.m. For information call 475-8952.

American Legion and Auxiliary hospital equipment available by contacting Loren Keezer at 475-2786 or 475-3431.

Deadline for teams interested in playing Slow Pitch Baseball this summer, May 14. Deadline for Fast Pitch League, May 7. Contact Oren Wireman, 475-2924. Final meeting for league organization May 20, 7:30 p.m., Chelsea High school.

Local Glass Collection Barrels Are Removed

Glass collection barrels at the Congregational church have been removed, Mrs. Daniel Kellin announced this past week. Members of the Junior Pilgrim Fellowship, who have sponsored the glass collection program in Chelsea this past winter, urge Chelsea residents to continue saving their bottles, in the interest of ecology, and take them, along with their old newspapers, to the recycling center located at Arborland in Ann Arbor.



DONALD BALDWIN

Don Baldwin Seeking School Board Position

Donald E. Baldwin, 1023 Freer Rd., has decided to seek election to fill the one-year term vacancy on the Chelsea School Board in the coming school board elections.

Married, and the father of one son in the fourth grade, Baldwin is assistant plant manager at the Mechanical Spring Plant of North American Rockwell, where he has been employed for the past 20 years.

A 1948 graduate of Chelsea High school, he attended Eastern Michigan University, and took special courses from LaSalle Extension University in accounting, and from the University of Michigan in business management.

Longtime active in local affairs, Baldwin was president of the Chelsea Chamber of Commerce in 1964, president of the Chelsea Community Chest in 1963, and treasurer from 1959 through 1961. Member of the Kiwanis Club, Board of Directors in 1962, he served as Chelsea's village president from 1966 through 1968, and on the Village Council in 1962 and 1963.

A worshipful master in the Masons, Baldwin is currently Committee Chairman for Cub Scout Pack 465. He was institutional representative in 1964.

Baldwin was the recipient of the Jaycees Distinguished Service Award in 1960.

Other organizations to which he has belonged include the American Society of Personnel Administrators, Ann Arbor Manufacturers Association, National Association of Cost Accountants, Washington County Commission for Retarded Children, and Governor Romney's Sub-Committee on Area Development. He is currently on the Board of Directors for the Michigan Spring Manufacturers.

Mrs. Baldwin is a former teacher in the Jackson and Chelsea school system. She is currently a volunteer library helper at South Elementary school.

Both Charles Powers, and E. Jay Hopkins have announced that they will not be running for reelection in the up-coming annual election.

Deadline for returning one's petition for candidacy for the elections is Monday afternoon, May 17. The election will be held June 14.



ROBERT N. SCHAFER

Robert Schafer Seeks School Board Post

Robert N. Schafer, 1575 Pierce Rd., has announced his candidacy for the one-year term vacancy on the Chelsea Board of Education. Schafer is married and has six children, four of whom attend Chelsea High school, Robert, Kathryn, Karen, and Bill, while John attends Beach Middle school, and Susan, North Elementary school.

Schafer has been a resident of the school district for more than 10 years. Prior to that time he lived in Ypsilanti and Ann Arbor, where he worked at the Institute for Fisheries Research, which was then with the Conservation Department.

With the reorganization of the Conservation Department in 1964, and the consolidation of all statewide department research activities into a new research and development division, he was transferred to Lansing. He is presently supervisor of research, administration and facilities.

Schafer has long been active in the area Army National Guard, and Reserve affairs. He was commander of Company "K", 125th MNG, in Ann Arbor from 1966 until 1969, a staff officer of the 107th Signal BN, Ypsilanti, and commanding officer of the 838th Radio Relay (VHF) Company (Army) and communications officer of the 4-20 Artillery Battalion (8 inch How.), Lansing.

Since 1967 he has been an instructor of the Army Command and General Staff College on the staff of the 5033 USAR School, of Lansing, and currently conducts classes in Ann Arbor, Lansing, and during the summer at Camp McCoy in Wisconsin.

Schafer attended the Detroit Institute of Technology, Universities of Nebraska and Michigan, and various military schools, including Advanced Infantry School, Ft. Benning, Ga., Advanced Signal School, Ft. Monmouth, as well as having taken the Instructor Training Course, Ft. Benjamin Harrison. He is a 1966 graduate of the Army Command and General Staff College, Ft. Leavenworth, Ka.

Among the various associations with whom he has been affiliated are the Citizens for Quality Education, Michigan Association of Conservation Ecologists, Michigan

DEATHS

Eugene G. Martin Dies Sunday at Hospital Following Long Illness

Eugene G. Martin, 17603 Old US-12, died May 9, at St. Joseph Mercy Hospital, in Ann Arbor, at the age of 82.

He was born April 7, 1919 at Howell, the son of George and Flossie Smith Martin. He married Mary Toth June 26, 1950 at St. Thomas Catholic church in Ann Arbor. She survives.

A graduate of Chelsea High school, he was employed by the Goodyear Tire and Rubber Co., in Jackson, for 24 years, until his retirement in November, 1970, due to ill health. He was a veteran of World War II, serving in both Germany and the South Pacific. He was a past Commander of the American Legion, Herbert McKune Post, No. 31, and a member of the executive board of Local 185 of the Goodyear Tire and Rubber Co. He was also a member of St. Mary Catholic church of Chelsea, the Ushers Club of the church, and a member of the Chelsea Council of the Knights of Columbus.

In addition to his widow, he is survived by one brother, Clyde Martin, of Chelsea, an uncle, George P. Smith of Ann Arbor, and a niece, Anita Lynne Martin of Chelsea.

Funeral services were Wednesday, May 12, at 10 a.m. at St. Mary Catholic church, with the Rev. Fr. Francis Wahowiak officiating. Burial was in Mt. Olivet Cemetery, with military services under the auspices of the American Legion, Herbert J. McKune Post, No. 31. Rosary was recited Tuesday evening, 8 p.m. at the Staffan Funeral home.

Blaine Minix

Chelsea Man's Father Dies at U-M Hospital

Blaine Minix, Stockbridge, died Wednesday morning, May 6, in the University of Michigan Hospital, at the age of 77.

A veteran of World War II, survivors include his widow, Lizzie, two daughters, Mrs. James McFarland of Ann Arbor, and Mrs. Eugene Williams of Stockbridge; six sons, Jeff of Shandon, O., Herbert of Lebanon, O., Edwin of Stockbridge, Skid of Pleasant Plain, O., Charles of Chelsea, and Frank of Ann Arbor; 15 grandchildren, and one great-granddaughter.

Funeral services were held Saturday, May 8, at 1 p.m. at the Praeger-Dunn Funeral Home in Silverville, Ky. Arrangements were by Caskey Funeral Home, Stockbridge.

BIRTHS

A son, Scott Duane, Friday, April 23, to Mr. and Mrs. Duane Satterthwaite, Rochester. Paternal grandparents are Mr. and Mrs. Leroy Satterthwaite, maternal grandparents are Mr. and Mrs. A. D. Krugler of Wayne. Maternal great-grandfather is A. M. Lewis, Wayne.

Academy of Arts and Science, American Fisheries Society, Wildlife Society, the Reserve Officers Association, and until 1960, the Central Ann Arbor Kiwanis.

French Class Students Enjoy Tour of Quebec

Fifteen students from the third and fourth year high school French classes spent a very enjoyable week in the French-Canadian city of Quebec. During the year, students earned the money for the trip from candy sales.

Chaperoned by Mrs. Sylvia Gilbert and Mrs. Jane Cummings were Jeanne and Jane Haselschwardt, Kit and Karen Schafer, Cindy Reynolds, Eileen Evans, John Sacher, Mike Rossbach, Mike Hergert, Dana Check, Joan Platt, Sue Dirlam, Laurel Prinzing, Pam Parnell, and Pat Eisele.

The group enjoyed numerous activities such as riding in a buggy (caleche); around Quebec, while guides recounted many historic facts. They visited the Rue du Tresor, where the artists displayed and sold their art, and chatted with the tourists, and crossed the St. Lawrence Seaway on the ferry from Quebec to the town of Levis.

Many of the students particularly liked the movie "Love Story" in French.

The students visited the Place Laurier, a large indoor shopping center which contained two floors of very modern, small and medium sized stores; Sainte-Anne de Beaupre, a shrine which contains chapels with architectural relics from the past; Dufferin Terrace, a wide boardwalk in front of the Frontenac Hotel which provides a beautiful view of the St. Lawrence Seaway; the grassy Plains of Abraham, where Wolfe and Montcalm fought; and the Citadel, which is still used by the Canadian armed forces. They also visited the old section of Quebec, with its winding, narrow streets and little shops, which seemed very European.

The hotel where the group stayed was pleasant, but across the street workmen were blasting a pit to enlarge the city hall. Until midnight they could hear three sirens, and then a blast which would shake the hotel.

During their last evening in Quebec the students splurged and dined at Chateau Frontenac, a large, elegant hotel overlooking the St. Lawrence River.

On the trip back to Chelsea,

they stopped in Montreal and rode the modern and clean subway, which had underground shopping centers at some of the stops. They picnicked at the top of the tall mountain, Mount Royal, which overlooks the city of Montreal.

The train trip home, which lasted about 16 hours, was very tiring, and the group was pleased to find their friendly bus driver, Mr. Hill, waiting in Detroit for them when the train arrived.

All who participated reported they enjoyed the trip, and the juniors are hoping to make the trip again next year.

The chaperones commended the students for being a mature and responsible group, which contributed to the enjoyment of the trip.

Mr. and Mrs. Herbert Hinz, 262 Harrison St., visited Sarasota Jungle Gardens, April 16, on a trip to Florida's lower west coast.

Lima Employs Professional Appraisal Firm

Meierson Appraisal Co. has been employed by Lima township to appraise all real estate in the township for tax assessment purposes. Bill Meierson, general manager of the company, informed the township at their May 3 meeting that the work would start immediately.

Field personnel will begin contacting residents of the township beginning May 20. Completion of the project is scheduled for Dec. 31, at which time public hearings will be scheduled to begin soon thereafter. Property owners will be able to discuss their assessments with a Meierson representative at the public hearings.

Meierson has been quite active in this area. They appraised the city of Milan and York township last year, and are presently in the process of appraising Saline township.

FLARES
\$9 to \$12



PERMANENT PRESS

- Also -

LEVI'S BELLS

In Blue Denim and White Twill

\$8.00

STRIETER'S MEN'S WEAR

"The Place To Go For Brands You Know"

50%

DISCOUNT

On Many of Our

MOE and THOMAS LIGHT FIXTURES

We're extending the cut-off date on this special sale.

Come in soon for

BIG VALUE BUYS

in

QUALITY LIGHTING

CHELSEA LUMBER CO.

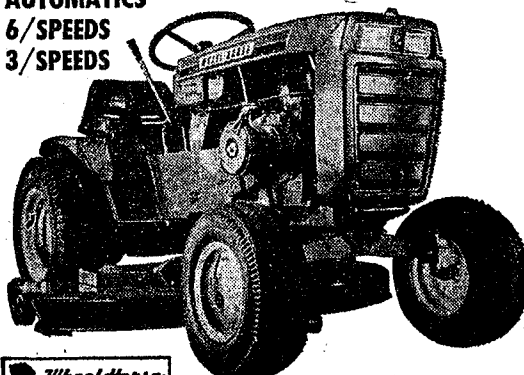
DIAL GR 5-3391

WHEEL HORSE WHEEL & DEAL DAYS

Your Choice of 9 All New 1971 Models

8 to 14 H.P.

- AUTOMATICS
- 6/SPEEDS
- 3/SPEEDS



A HORSE OF A TRACTOR

With 9 models to fit every need and budget—with 42 optional attachments to do every job — 365 days a year.

SAVE UP TO \$295.00 DURING OUR SPRING EARLY BIRD DEAL DAYS

Sold and Serviced at



110 N. MAIN ST. PHONE 475-7472
WE TAKE TRADES

GAMBLES ANNIVERSARY SALE!

POWER MASTER 5-HP ROTARY TILLER with Power Reverse



\$169.95

Shop Now and Save!



Easy fingertip Controls

Briggs & Stratton Engine

Unbreakable Bolo Tines

Powerful! Grinds up a swath 0 to 8" deep, 26" wide (40" with optional extensions). Reverse is power takeoff-belt operated. Transmission protected by 4 adjustable Timken® bearings. 10" wheels. Self-sharpening tines.

8 H.P. ROTO TILLER, Extra Power \$219.95

5 H.P. ROTO TILLER, Heavy Duty \$179.95

Complete Line of Lawn & Garden Supplies

The Supermarket That's Just a Little Bit Better

Stop & Shop

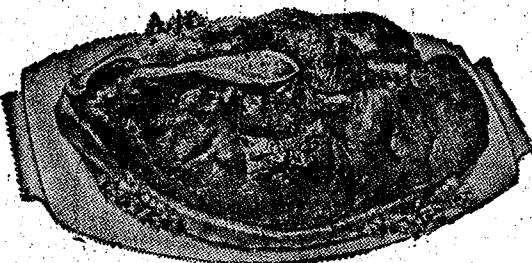
14901 Old U.S.-12
Corner at M-52
Chelsea



Prices effective Thursday, May 13, 1971
through Wednesday, May 19, 1971.

Our Reputation is "at Steak"

"Trimmed Rite" Tender, Juicy, Delicious
U.S.D.A. CHOICE BEEF



SIRLOIN STEAKS 99¢ lb.

Beef Up Your Budget!

Tender!
T-Bone Steaks ... \$1²⁹ lb.

Delicious!
Porterhouse Steaks ... \$1³⁹ lb.

Beef
Cube Steaks ... \$1²⁹ lb.

Lean!
Delmonico Steaks \$1⁹⁹ lb.

Tender! Beef
Rib Steaks ... \$1⁹⁹ lb.

Fresh Quartered
Pork Loin ... 49¢ lb.

Fresh
Spare Ribs ... 69¢ lb.

Rath's Breakfast
Beef Bacon ... 89¢

Peschke's Pickle, Olive, Liver, Plain
Dutch, Dinner, Cooked Salami, Spiced
Luncheon Meats ... 69¢

Hickory Smoked, Sugar Cured, Circle A.
Thick-Sliced
Bacon ... 99¢

With MINI-PRICING you still buy Quality - PLUS you get our Double
your Money Back Guarantee if not completely satisfied.

CHASE & SANBORN

COFFEE 1-Lb. Can 59¢

McDonald Low Fat or Homo

MILK 1 Gal. Crtn. 79¢

Sweet Milk or Buttermilk
MEL-O-CRUST
BISCUITS 8-Oz. Tube 7¢

VAN CAMP'S
PORK & BEANS 1-Lb., 15-Oz. Can 22¢

DELICIOUS, OUR FAVORITE
CUT GREEN BEANS 15 1/2-Oz. Can 10¢

ALL FLAVORS
JELL-O GELATIN DESSERTS 3-Oz. Pkg. 10¢

FRESH LAND-O-LAKES
BUTTER 1-Lb. Pkg. In Quarters 79¢

EASY MONDAY PINK LIQUID
DISH DETERGENT 1/2 Gal. 64 Oz. 49¢

SCOTTIES ASSORTED
FACIAL TISSUES 200-Count Box 22¢

CLEAN-UP TIME!
GLAD TRASH BAGS 10-Count Pkg. 59¢

REFRESHING
V-8 COCKTAIL VEGETABLE JUICE 1-Qt. 14-Oz. Can 39¢

McDonald's Assorted Flavors
TWIN POPS 12-Pack Pkg. 39¢

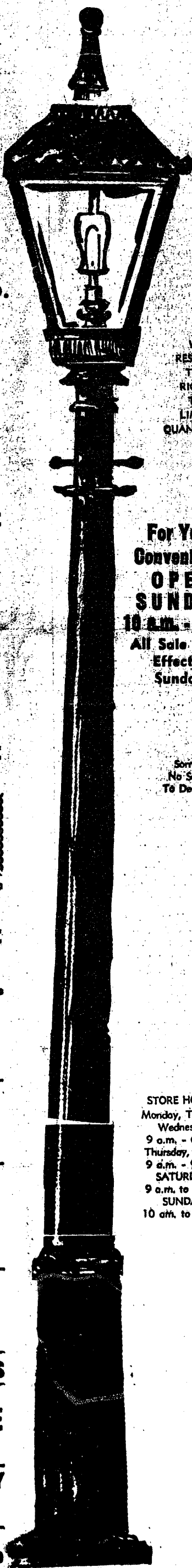
HEALTH & BEAUTY AIDS
FAMILY SIZE
CREST TOOTHPASTE 6 3/4-Oz. Tube 79¢

PROTEIN 21 HAIR SPRAY 13-Oz. Aerosol \$1⁴⁹

SPECIAL LABEL
Head & Shoulders Shampoo Family Size 6.5 Oz. Bottle \$1¹⁹

Farm Fresh Produce
SALAD TIME

NEW CABBAGE ... Lb. 24¢
RED RADISHES ... Cello Bag 12¢
GREEN ONIONS ... Bunch 12¢
SOUTHERN GROWN
CUCUMBERS ... 2 for 29¢



WE RESERVE THE RIGHT TO LIMIT QUANTITIES

For Your Convenience
OPEN SUNDAY
10 a.m. - 4 p.m.
All Sale Prices Effective Sundays

Sorry, No Sales To Dealers

STORE HOURS:
Monday, Tuesday, Wednesday
9 a.m. - 6 p.m.
Thursday, Friday
9 a.m. - 9 p.m.
SATURDAY
9 a.m. to 6 p.m.
SUNDAY
10 a.m. to 4 p.m.

Second Section

The Chelsea Standard

Pages 9-14

CHELSEA, MICHIGAN, THURSDAY, MAY 13, 1971



BUSY SEAMSTRESS: Putting the final touches on yet another hospital gown for use by the Chelsea Methodist Home is Mrs. Fannie Ballard. A resident of the Home for more than eight years, Mrs. Ballard has made more than 600 hospital gowns for use in the nursing area of the Home.

'Only 92 Years Old' She Sews 612 Hospital Gowns

Mrs. Fannie Ballard, a resident of the Chelsea Methodist Home, has no problems finding things to occupy her time. The spry little lady, who claims to be "only 92-years-old," has been a resident of the Home for more than eight years.

Since her coming to the Home, Mrs. Ballard has not been lazy. She has sewn more than 600 hospital gowns for the Home, for use in the nursing area. Fashioned out of discarded men's white shirts, the gowns feature the standard tape ties

of regular hospital gowns. With the fine fabrics which are currently used in men's shirts, they are much softer than the standard gown.

Mrs. Ballard began making this type of gown before coming to the Home, when she lived in Detroit. Working through her church group, she made 100 gowns for the Cancer Society, and 132 gowns, which her group sent to Palestine. She remembers receiving a letter of thanks from the people in Palestine, who expressed great appreciation for her gift, as material of that quality was not available there.

Her present total is 612, finished gowns for the Home, although three more are complete, with the exception of adding the tape ties in the back. Mrs. Ballard would appreciate any donations of used men's white shirts for use in her work from any of the local citizens.

Raised on a farm in Crosswell, which is near Port Huron, Mrs. Ballard has one son, and daughter, and five grandchildren.

Blue Cross, Blue Shield Rates Will Increase Starting July 1

Lansing — The Michigan Commerce Department's Insurance Bureau has authorized Michigan Blue Cross and Michigan Blue Shield to increase their rates on July 1.

Blue Cross, which pays hospital costs for its subscribers, received approval to increase its rates an average of 8.7 percent on regular subscriber contracts.

Blue Shield, which pays doctors and other health care fees, was granted a rate increase averaging 6.3 percent.

The amount of increase will vary greatly, however, depending upon the type of contract, the group's rating, and riders on the contracts.

Blue Shield rates for the majority of senior citizens carrying

supplemental Medicare coverage will increase 31 cents per month.

State Insurance Commissioner Russell E. Van Hooser said the new rates will be firm for one year. Previously, both Blue Cross and Blue Shield filed new rates every three months under provisions of the Merit Rating Plan put into effect in 1965.

Under the new procedure, Van Hooser said, Blue Cross and Blue Shield will be allowed to file for a rate change only once a year.

"Blue Cross and Blue Shield now know what their income will be for a year and will have to live within that amount," he said.

Parents Needed To Chaperone At Band Camp

Parents of members of the Chelsea High school band have been asked to contribute a week's time to accompany the band when it goes to Band Camp this coming August. Camp will be held Aug. 15 through 21, at which time the band students will work on band material for the coming year.

At this time, three couples are still needed to assist with the chaperone duties at camp. Any interested parents are urged to contact Don Pearson at 475-8750.

Pearson claims that band camp is necessary to maintain the high quality of band which Chelsea has had in past years. "Unfortunately," he claims, "we cannot just send the band to camp unchaperoned and accomplish the established goals."

The Upper Michigan Copper Country is the largest commercial deposit of native copper in the world. It has yielded over 11 billion pounds in the past century.

MID-STATE FINANCE CORP.
\$25 to \$1,000
For Any Worthwhile Purpose

See or Call
FRANK HILL
at 475-8631

111 PARK STREET
CHELSEA, MICH.

SPECIAL
thru Wednesday, May 19, 1971

COLORFUL TASTY PARFAIT

48¢

Home of fine Brazier foods

Dairy Queen
brazier.

901 S. MAIN ST., CHELSEA PHONE 475-2677

WORKING ON THE RESEARCH PLAN

in Liber 1840, on page 771 Washtenaw County Records, Michigan, on which page there is claimed to be due at the death of the sum of Eighteen thousand eighty-one and 75/100 Dollars (\$18,081.75) including interest at 8 1/4% per annum. Under the power of sale contained in said mortgage and the statute in that behalf made and provided, notice is hereby given that the said sum of Eighteen thousand eighty-one and 75/100 Dollars (\$18,081.75) including interest at 8 1/4% per annum is due and payable to the said

as provided by Statute and Court Rule.
 Dated: April 29, 1971.
 s/ Rodney M. Hutchinson
 Judge of Probate.
 A true copy.
 J. R. Cooper
 Register of Probate.
 Keusch & Flintoft
 Attorneys for Estate
 121 S. Main St.
 Chelsea, Michigan.
 May 6-1980

rovided by State and Court Rule.
 ted: May 8, 1911.
 ue copy of Rodney E. Hutchinson
 Cooper, Judge of Probate.
 aster of Probate.
 nior and Esq.
 George W. Kelsey
 ney for Estate
 Huron, Ypsilanti. May 6-18-20

UNDERGARTEN—

ie copy.
ard H. Young, Attorney
red By:
ard H. Young
ney for Plaintiff
N. Main Street
Arbor, Michigan 48108
phone 682-0721 April 29-May 6-13-2

Chelsea Village P
ROBERT RUI

Planning Commission

Puzzle No. 2076

CHELSEA VILLAGE COUNCIL PROCEEDINGS

VILLAGE OF CHELSEA

Richard Harvey, Clerk

May 24 and 25, Beach school will hold an Art Fair, from 6 to 8 p.m. each evening. This is sponsored by the Art Department at the school.

Planning Commission

A public hearing will be held on Thursday, May 13, 1971 at 7:30 p.m. in the Village Council Room concerning the request of Rose Merkel and the estate of Henry Merkel, Sr., deceased, Martin Merkel, executor, for rezoning of property described below from Agricultural to Residential R-1.

Chelsea Village Planning Commission
ROBERT RUDD, CHAIRMAN

The Village Council will meet at 8:00 p.m., Tuesday, May 18, 1971 to consider objections to the construction of curb and gutter in the area hereinafter listed, one-half of the cost thereof to be defrayed by special assessment, pro-rated according to abutting frontage. The estimate of the cost is on file in the Village Clerk's office, 104 E. Middle Street.

existing curb and gutter.
West side from Meadowlane, south 100 feet.

Richard Harvey, Clerk

1995, 1996, 1997, 1998, 1999, 2000, 2001, 2002, 2003, 2004, 2005, 2006, 2007, 2008, 2009, 2010, 2011, 2012, 2013, 2014, 2015, 2016, 2017, 2018, 2019, 2020, 2021, 2022, 2023, 2024, 2025, 2026, 2027, 2028, 2029, 2030, 2031, 2032, 2033, 2034, 2035, 2036, 2037, 2038, 2039, 2040, 2041, 2042, 2043, 2044, 2045, 2046, 2047, 2048, 2049, 2050, 2051, 2052, 2053, 2054, 2055, 2056, 2057, 2058, 2059, 2060, 2061, 2062, 2063, 2064, 2065, 2066, 2067, 2068, 2069, 2070, 2071, 2072, 2073, 2074, 2075, 2076, 2077, 2078, 2079, 2080, 2081, 2082, 2083, 2084, 2085, 2086, 2087, 2088, 2089, 2090, 2091, 2092, 2093, 2094, 2095, 2096, 2097, 2098, 2099, 2100, 2101, 2102, 2103, 2104, 2105, 2106, 2107, 2108, 2109, 2110, 2111, 2112, 2113, 2114, 2115, 2116, 2117, 2118, 2119, 2120, 2121, 2122, 2123, 2124, 2125, 2126, 2127, 2128, 2129, 2130, 2131, 2132, 2133, 2134, 2135, 2136, 2137, 2138, 2139, 2140, 2141, 2142, 2143, 2144, 2145, 2146, 2147, 2148, 2149, 2150, 2151, 2152, 2153, 2154, 2155, 2156, 2157, 2158, 2159, 2160, 2161, 2162, 2163, 2164, 2165, 2166, 2167, 2168, 2169, 2170, 2171, 2172, 2173, 2174, 2175, 2176, 2177, 2178, 2179, 2180, 2181, 2182, 2183, 2184, 2185, 2186, 2187, 2188, 2189, 2190, 2191, 2192, 2193, 2194, 2195, 2196, 2197, 2198, 2199, 2200, 2201, 2202, 2203, 2204, 2205, 2206, 2207, 2208, 2209, 2210, 2211, 2212, 2213, 2214, 2215, 2216, 2217, 2218, 2219, 2220, 2221, 2222, 2223, 2224, 2225, 2226, 2227, 2228, 2229, 2230, 2231, 2232, 2233, 2234, 2235, 2236, 2237, 2238, 2239, 2240, 2241, 2242, 2243, 2244, 2245, 2246, 2247, 2248, 2249, 2250, 2251, 2252, 2253, 2254, 2255, 2256, 2257, 2258, 2259, 2260, 2261, 2262, 2263, 2264, 2265, 2266, 2267, 2268, 2269, 2270, 2271, 2272, 2273, 2274, 2275, 2276, 2277, 2278, 2279, 2280, 2281, 2282, 2283, 2284, 2285, 2286, 2287, 2288, 2289, 2290, 2291, 2292, 2293, 2294, 2295, 2296, 2297, 2298, 2299, 2300, 2301, 2302, 2303, 2304, 2305, 2306, 2307, 2308, 2309, 2310, 2311, 2312, 2313, 2314, 2315, 2316, 2317, 2318, 2319, 2320, 2321, 2322, 2323, 2324, 2325, 2326, 2327, 2328, 2329, 2330, 2331, 2332, 2333, 2334, 2335, 2336, 2337, 2338, 2339, 2340, 2341, 2342, 2343, 2344, 2345, 2346, 2347, 2348, 2349, 2350, 2351, 2352, 2353, 2354, 2355, 2356, 2357, 2358, 2359, 2360, 2361, 2362, 2363, 2364, 2365, 2366, 2367, 2368, 2369, 2370, 2371, 2372, 2373, 2374, 2375, 2376, 2377, 2378, 2379, 2380, 2381, 2382, 2383, 2384, 2385, 2386, 2387, 2388, 2389, 2390, 2391, 2392, 2393, 2394, 2395, 2396, 2397, 2398, 2399, 2400, 2401, 2402, 2403, 2404, 2405, 2406, 2407, 2408, 2409, 2410, 2411, 2412, 2413, 2414, 2415, 2416, 2417, 2418, 2419, 2420, 2421, 2422, 2423, 2424, 2425, 2426, 2427, 2428, 2429, 2430, 2431, 2432, 2433, 2434, 2435, 2436, 2437, 2438, 2439, 2440, 2441, 2442, 2443, 2444, 2445, 2446, 2447, 2448, 2449, 2450, 2451, 2452, 2453, 2454, 2455, 2456, 2457, 2458, 2459, 2460, 2461, 2462, 2463, 2464, 2465, 2466, 2467, 2468, 2469, 2470, 2471, 2472, 2473, 2474, 2475, 2476, 2477, 2478, 2479, 2480, 2481, 2482, 2483, 2484, 2485, 2486, 2487, 2488, 2489, 2490, 2491, 2492, 2493, 2494, 2495, 2496, 2497, 2498, 2499, 2500, 2501, 2502, 2503, 2504, 2505, 2506, 2507, 2508, 2509, 2510, 2511, 2512, 2513, 2514, 2515, 2516, 2517, 2518, 2519, 2520, 2521, 2522, 2523, 2524, 2525, 2526, 2527, 2528, 2529, 2530, 2531, 2532, 2533, 2534, 2535, 2536, 2537, 2538, 2539, 2540, 2541, 2542, 2543, 2544, 2545, 2546, 2547, 2548, 2549, 2550, 2551, 2552, 2553, 2554, 2555, 2556, 2557, 2558, 2559, 2560, 2561, 2562, 2563, 2564, 2565, 2566, 2567, 2568, 2569, 2570, 2571, 2572, 2573, 2574, 2575, 2576, 2577, 2578, 2579, 2580, 2581, 2582, 2583, 2584, 2585, 2586, 2587, 2588, 2589, 2590, 2591, 2592, 2593, 2594, 2595, 2596, 2597, 2598, 2599, 2600, 2601, 2602, 2603, 2604, 2605, 2606, 2607, 2608, 2609, 2610, 2611, 2612, 2613, 2614, 2615, 2616, 2617, 2618, 2619, 2620, 2621, 2622, 2623, 2624, 2625, 2626, 2627, 2628, 2629, 2630, 2631, 2632, 2633, 2634, 2635, 2636, 2637, 2638, 2639, 2640, 2641, 2642, 2643, 2644, 2645, 2646, 2647, 2648, 2649, 2650, 2651, 2652, 2653, 2654, 2655, 2656, 2657, 2658, 2659, 2660, 2661, 2662, 2663, 2664, 2665, 2666, 2667, 2668, 2669, 2670, 2671, 2672, 2673, 2674, 2675, 2676, 26

BOWLING NEWS

Chelsea Lanes Mixed Final Standings

	W	L
Chelsea Lanes	92	138
H. & H.	138	93
Fitzsimmons Exc.	128	103
Gephart & Barkley	125	108
Turner & Johnson	120	111
Sindlinger & Pierce	119	112
Ann Arbor Centerless	119	112
Rabbis & Priests	118	113
Wolverine No. 2	108	123
Devine & Coppertoll	101	130
Heim & Arrington	95	136
Bollinger's Sanitation	76	155

Women's 150 and over: J. Rabbitt, 160; 180, 220; P. Gephart, 183, 206, 168; R. Johnson, 172, 162, 193; A. Turner, 163, 180; N. Collins, 178, 179; K. Arrington, 178, 153; E. Harmon, 187; H. Morgan, 155, 166, 155; L. Alexander, 154, 161, 151; J. Priest, 157; L. Gilmore, 152.

Women's 450 and over: J. Rabbitt, 560; P. Gephart, 557; R. Johnson, 527; A. Turner, 490; N. Collins, 488; H. Morgan, 476; L. Alexander, 466.

Men's 175 and over: R. Morgan, 212, 189; R. Gilmore, 204; G. Arrington, 202; M. Poertner, 188, 194; E. Keezer, 191; O. Johnson, 191; D. Alexander, 180, 190; L. Gephart, 189, 186; P. Barkley, 189; D. Coppertoll, 187; D. Ellenwood, 183, 180; M. Rabbitt, 178; D. Longworth, 177.

Men's 475 and over: R. Morgan, 661; M. Poertner, 550; D. Alexander, 541; L. Gephart, 540; O. Johnson, 529; D. Coppertoll, 527; J. Collins, 504; G. Arrington, 501; F. Barkley, 493; E. Keezer, 490; D. Longworth, 489; R. Gilmore, 483.

Inverness Golf League

	Pts.
Chelsea Milling	6½
Chelsea Lumber	6½
Lardas & Ahlstrom	6½
A. D. Mayer Ins.	6½
Chelsea Lanes	6
L. P. S.	5½
Meabon's	5½
The Pub	5½
G. A. Sales	5½
Schumm's	4½
Inverness Inn	5
J & S Tool Co.	5
Seitz's Tavern	4½
The Keglers	4
Dana Corp.	4
Fitzsimmons Exc.	3
Central Fibre	3
Dancers	2½

CHS JV Baseball

May 13—Milan	H
May 18—Lincoln	A
May 20—South Lyon	H
May 25—Saline	A
May 27—Dexter	H

YES

WE ARE MAKING
LONG TERM FARM
REAL ESTATE
LOANS

SEE US

**Federal
LAND BANK
Association**

P. O. Box 1006
Ph. 769-2411 3645 Jackson Rd.
Ann Arbor, Mich. 48103

Junior House League Final Standings, May 6

	W	L
Chelsea Drug	154	77
J & S Tool	152	79
The Pub	136	95
Smith's AAA Service	132	99
Boyer Automotive	121	110
Inverness Inn	119	112
3-D Sales & Service	111	120
Jiffy Mix	104	127
Gambles	103	128
Palmer T-Birds	91	140
Wolverine No. 2	90	141
Wolverine No. 1	73	168

Over 200 games: S. Policht, 214; O. Johnson, 215; B. Johnson, 200; A. Fleischmann, 223; A. Fletcher, 206, 215; T. Dittmar, 208; L. Fahrner, 200, 222; D. Scott, 220; J. Hughes, 209; L. Hughes, 235; D. Toma, 221; K. Norris, 203, 224; R. Ringe, 200; J. Popovich, 209; N. Fahrner, 214.

Over 600 series: A. Fletcher, 606; S. Policht, 555; O. Johnson, 538; B. Johnson, 570; J. Forner, 528; A. Fleischmann, 517; F. Dickinson, 500; P. Boham, 511; B. Bee-man, 536; T. Dittmar, 530; A. Sannes, 535; J. Harmon, 517; J. Harok, 540; L. Fahrner, 586; S. Hopkins, 514; D. Scott, 527; J. Hughes, 505; L. Hughes, 530; D. Buku, 540; E. Buku, 501; H. Burnett, 510; D. Coppertoll, 522; K. Toma, 533; R. Ringe, 504; J. Popovich, 578.

Guys and Gals Mixed League Final Standings

	W	L
Pub No. 1	102	80
Wolverine Bar	89	43
Pleasant Lake resort	74	58
Pub No. 2	73½	63½
Chelsea Lanes	65½	67½
Team No. 4	64½	67½
Steele Heat & Cool	64	68
Tea's Standard Service	60½	71½
Four D's	58½	73½
Norris Electric	52	80
Grass Lake	47½	84½
Sandbaggers	41	91

Team high game: Pub No. 1, 1,762.

Women's high game: N. Packard, 208.

Women's high series: B. Fritz, 558.

Women's 150 or over games: M. H. Degener, 153; N. Packard, 208; N. Collins, 175, 176, 180; D. Eder, 161; E. Koengter, 170; C. Timmerman, 158; D. Cozzens, 154; B. Smith, 170, 157; P. Elliott, 160, 167; P. Hyton, 165; B. Fritz, 184, 191, 178.

Women's 450 or over series: B. Fritz, 553; B. Smith, 461; P. Elliott, 468; E. Koengter, 465; N. Packard, 485; N. Collins, 531.

Men's high games: A. Sannes, 210.

Men's high series: A. Sannes, 582.

Men's 175 or over games: A. Sannes, 189, 210; J. Eder, 207, 180; T. Steele, 204; J. Norris, 182; J. Elliott, 194, 179; D. Fritz, 185.

Men's 500 or over series: D. Fritz, 523; J. Elliott, 540; T. Steele, 542; J. Eder, 548; A. Sannes, 562.

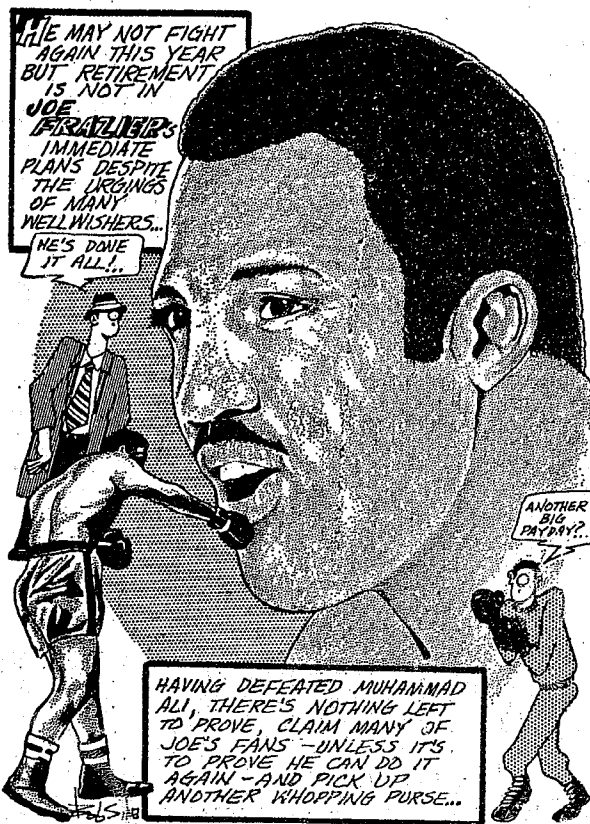
1971 Bulldog

Varsity Track Schedule
May 15—Regional—Mich. Center
May 20—Conference—South Lyon
May 22—State—Michigan Center
May 24—Jackson Honor Roll
Meet

CHS Golf Schedule

May 14—Regional meet.
May 17—League meet.

SPORTS CORNER



TV Panel Discussion Slated On Public Views on Vietnam

East Lansing — What do the American people believe about the war in Vietnam and how much confidence do they have in reports on the war by the Nixon Administration and the national news media? These questions form the basis for a one-hour special report, Homefront '71: The President, the Press and the Pub-lic, at 4:30 p.m. Sunday, May 16, on WMSB (Channel 10), Michigan State University television.

Administration spokesmen, including Herbert Klein, director of communications, and editors from "Newsroom" programs of public television stations across the country will discuss the public's attitudes towards the administration, the press and the "credibility gap" between the two sources.

The views of the newsmen and the administration officials will be supplemented on the program by the release of a recent Gallup poll on the war. The poll was specially commissioned by NET for use on the program.

The questions asked in the poll deal with what the public feels about the credibility of administration and press statements on the war. It also examines opinions on what date is most preferred for withdrawal.

A special segment will examine the drastic changes in the sentiments of the Madison, Wis., populace on the war. A referendum favoring an immediate withdrawal was defeated a year ago but was overwhelmingly adopted by the Madison voters when it was offered again this year.

Other WMSB highlights include:

BEETHOVEN
NET Playhouse Biography recounts the most turbulent years in the life of composer Ludwig Van Beethoven in a historical dramatization at 11 p.m. Sunday, May 16.

With Shakespearean actor Michael Jayston playing the master composer, the drama centers on Beethoven as a young man of 22 having just received his first public acclaim. At this point in his life, Beethoven finds himself con-fronted with his own impending deafness and his gradual disillusionment with Napoleon and "The Age of Enlightenment."

FANFARE
Fanfare studies the birth and

rise of a new rock group, "Silver Bird," a Navajo family of seven, in a music filled documentary at 3 p.m. Sunday, May 16.

The program will mark the first national exposure for the Ortiz family appearing as the rock group, "Silver Bird," though members of the family have been performing musically for the past 20 years.

Three of the seven Ortiz family members in "Silver Bird" are adults who previously played the Catskill resort circuit as "The Coronados." The remaining four are teenagers who introduced the rock sound which now promises to make it a nationally known group.

The music performed by the group ranges from rock to Indian protest songs.

GENETICS

The history of genetics and a look at the question of whether man will someday be able to select or reject biological traits comprise "The Riddle of Heredity" on The World We Live In at 4 p.m. Sunday, May 16.

The film traces genetic discoveries from Leeuwenhoek's observation of micro-organisms and Mendel's experiments with mathematical factors of heredity to the 20th century discovery of the DNA molecule.

Questions examined during the program concern the possibility of test tube babies and the ability of man to eliminate unwanted traits.

The World We Live In will be rebroadcast at 11:30 a.m. Thursday, May 20.

ASSIGNMENT 10

Assignment 10 correspondents take a look at some of the problems encountered by the Chicano in Lansing at 10 p.m. Sunday, May 16. In other segments, reporters investigate changes in the sorority-fraternity system and the clean-up of Lake Lansing.

MUSIC FROM MICHIGAN STATE

Pianist David Neumeier, winner of the 1971 Grinnell Award, plays compositions by Brahms, Cage and Copland at 7 p.m. Wednesday, May 19.

Neumeier is a native of Bay City, has studied at Interlochen and has been a soloist with the University Orchestra and the MSU Chamber Orchestra.

District Court Proceedings

In the 14th District Court this past week, Kearney Alston, Ypsilanti, was examined on a charge of breaking and entering. He was bound over to Circuit Court.

Kenneth Herrst, 780 Freer Rd., Chelsea, was sentenced for careless driving. He was fined \$50 fine and costs, and was placed on six months probation.

Anthony Meifer, Ferndale, pled guilty to being a minor in possession of intoxicants. He paid \$25 fine and costs.

Alden F. Schneider, Pinckney, pled guilty to speeding 60 mph in a 50 mph zone. He paid \$21 fine and costs.

Ludie Lewis, Inkster, entered a plea of nolo contendere for a charge of driving across a median. He paid \$21 fine and costs.

Glenn E. Merryfield, Ypsilanti, was found guilty of careless driving. He paid \$35 fine and costs.

Kimberly Labay, Saline, pled guilty to improper passing on a marked hill. He paid \$15 fine and costs.

Jack Leonard, Saline, pled guilty to a charge of speeding 50 mph in a 25 mph zone. He paid \$40 fine and costs.

Emil J. Ambrite, Detroit, pled guilty to a charge of improper overtaking. He paid \$10 fine and costs.

Glenn Wilkerson, Saline, pled guilty to a charge of reckless driving. He paid \$75 fine and costs.

Charles G. Ricketts, Kokomo, Ind., pled guilty to a charge of assault and battery. He paid \$50 fine and costs.

Peter J. Roseburg, Ann Arbor, was found guilty of driving 30 mph in a 25 mph zone. He paid \$21 fine and costs.

Dennis E. Boos, Pinckney, was found guilty of passing on a shoulder. He paid \$10 fine and costs.

Theodore Blatsford, Clinton, was found guilty of a charge of contributing to a delinquency of a minor. He was referred to probation. Sentencing will be May 19 in Chelsea.

James Herrst, Dexter, was found guilty of making an improper U-turn. He paid \$10 fine and costs.

Richard Grant Lee, Whitmore Lake, pled guilty to a charge of being drunk and disorderly. He paid \$35 fine and costs, on penalty of spending three days in jail.

Robert Charles Lostutter, Detroit, pled guilty to a charge of being a disorderly person. He paid \$35 or spend five days in jail.

Basil Campbell pled guilty to having no operator's license, and for failing to transfer license plates. He paid \$10 for each offense.

Byron E. Donahoe, Ann Arbor, pled guilty to four charges. He paid \$16 fine and costs on a charge of having defective turn signals, \$54 fine and costs for having no Michigan operator's license, \$21 for speeding 55 mph in a 45 mph zone, and a second fine of \$16 for having no Michigan operator's license.

Donald Hallas, Dearborn, pled guilty to driving on a revoked license. He will be sentenced at a later date. He was referred to the PSI, and probation departments.

Roy Bishop, Ypsilanti, pled guilty to driving under the influence of alcohol. He will be sentenced June 14 in Chelsea. He was referred to the No Alcohol program.

David M. Tokarski, Pinckney, was found guilty of a charge of driving on a revoked license. He was referred to probation. Sentencing will be June 14 in Chelsea.

Steven D. Benko, Whitmore Lake, was sentenced. He was fined \$25 on penalty of spending five days in jail.

Grady Ray, Pontiac, pled guilty to a charge of driving under the influence of alcohol. He paid \$125 on penalty of spending 10 days in jail.

Norman E. Kelley, Manchester, entered a plea of nolo contendere to a charge of fleeing a police signal. Sentencing will be June 7.

Bonnie Honecut pled guilty to having no operator's license. She paid \$50 fine and costs.

Mike Clobberly, Chelsea, pled guilty to breaking a window in a school. Sentencing was sent for June 7 in Chelsea.



BOY SCOUT NEWS

TROOP 425—

Boys of Boy Scout Troop 425 opened their meeting with every one signing up for the Spring Camporee.

Announcements were made of the June Canoe trip.

Jim Boyer presented a flag signaling demonstration. Mike Check organized a first aid game.

Board of Review met for Scouts Joe Branham and Jerry Milliken. Jerry Milliken, scribe.

your week ahead

BY DR. A.W. DAMIS

Astrological Forecast Period: May 16 - May 23 inclusive

ARIES Mar. 21 - Apr. 19	Look out! Especially, in your immediate surroundings. Changes of a secret order are underway.
TAURUS Apr. 20 - May 20	Social activities or group functions, not necessarily to your liking, are indicated in your chart.
GEMINI May 21 - June 20	Apparently, you will become overconcerned about your relationship with your mate or similar alliance.
MOONCHILD June 21 - July 22	This week, many Moonchildren will seek to rid themselves of someone "who makes life miserable."
LEO July 23 - Aug. 22	Any attempt now, to resolve a domestic problem, could trigger a mental explosion. Proceed cautiously!
VIRGO Aug. 23 - Sept. 22	You will tamper with the thought of venturing into new places, and, seeing new faces.
LIBRA Sept. 23 - Oct. 22	You are prone to joining groups. The vanguard, for social opportunities is heading your way.
SCORPIO Oct. 23 - Nov. 21	Across the whole of your chart spreads: Playing "cat and mouse" with the opposite sex.
SAGITTARIUS Nov. 22 - Dec. 21	A standard warning; now essential: Examine documents on a legal theme, carefully, before signing.
CAPRICORN Dec. 22 - Jan. 19	It's time to regroup and consolidate your gains. So, placate and admit your shortcomings.
AQUARIUS Jan. 20 - Feb. 18	"Hoe in hand", you will weed out the deadwood in your task, job or mission.
PISCES Feb. 19 - Mar. 20	Systemized self deceit concerning the opposite sex will be your problem, this week.



CUB SCOUT NEWS

DEN 1, PACK 415—

Den 1, Pack 415 met May 11 at the home of their den mother, Mrs. Atkinson. Scouts went to the Chelsea Greenhouse and all received flowers. Mrs. Atkinson furnished treats.

John Dreiman, scribe.

Bulldog Varsity Baseball Schedule

May 13—Milan	Away
May 18—Lincoln	Home
May 19—Novi	Home
May 20—South Lyon	Away
May 25—Saline	Home
May 27—Dexter	Away

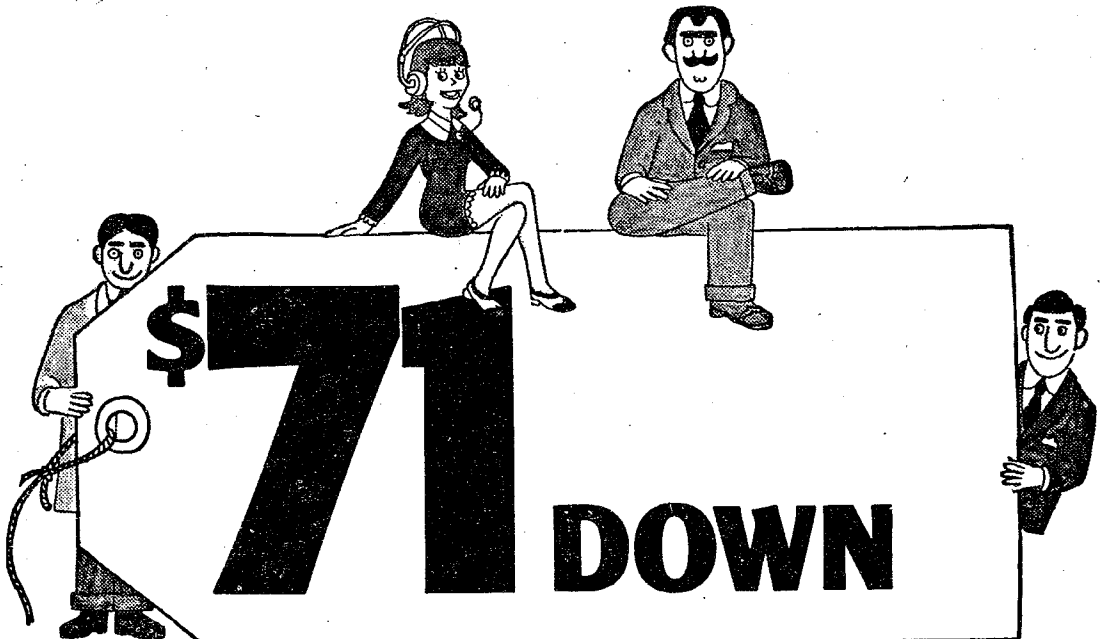
Big Mac, arching five miles over the Straits of Mackinac to connect the Upper and Lower Peninsulas, is one of the world's great bridges.

WANTED CEMENT & BLOCKWORK

All types—Poured walls, floors, drives and foundations.

CECIL CAUDILL

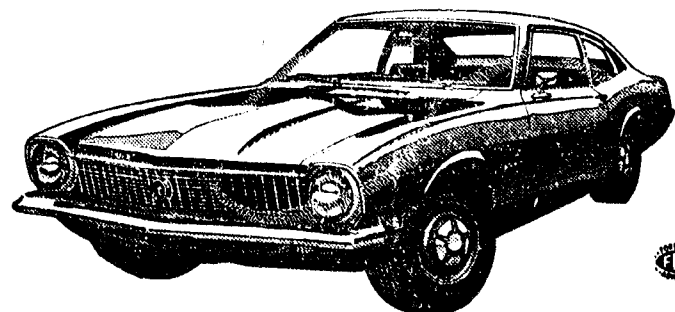
(517) 851-3847



(and \$71 a month for 36 months*)

NEW FORD MAVERICK

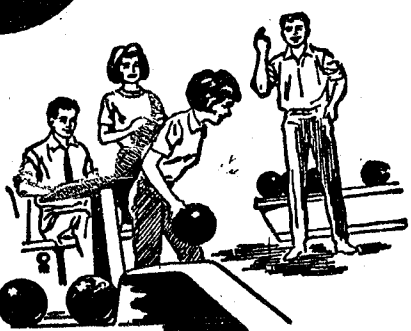
*Payment plan is based on a cash price of \$2220, a total deferred payment of \$2556 on approved credit. The ANNUAL PERCENTAGE RATE is 11.08%. State and local taxes, dealer preparation charges, if any, are extra.



NOBODY BEATS THE FORD TEAM
PALMER MOTOR SALES, INC.
CHELSEA, MICHIGAN

BOWL

for the
fun of it...



Having Fun Lately?
Bowling Is a Ball!

Put some fun in your life... Bowl for laughter and health at our modern, well-equipped lanes with rarely a wait. Bring the gang down!

CHELSEA LANES
1180 M-52 Phone GR 5-8141

FOR PROFIT

Profit-Producing Feeds For Livestock, Poultry

In our complete line of Fortified Feeds, you'll find the right feeds to keep livestock and poultry growing, gaining and producing.

Farmers' Supply Co.
Phone GR 5-5511

+ Services in Our Churches +

FIRST UNITED METHODIST CHURCH
The Rev. Olive Dickens, Pastor
Saturday, May 15—
8:00 a.m. to 3:00 p.m.—Action Group Yard Sale at 316 McKinley St.
Sunday, May 16—
9:00 a.m.—Church school (Nursery - Adult).
10:00 a.m.—Church school (Nursery - 2nd grade).
10:00 a.m.—Worship service.
Recognition of Church School teachers.
11:15 a.m.—Board of Trustees meeting.
11:15 a.m.—Intermediate Choir rehearsal.
Tuesday, May 18—
7:30 p.m.—Wesleyan Service Guild at home of Mrs. Glenn Erskine.
Wednesday, May 19—
9:00 a.m.—Sarah Circle at the home of Mrs. Arthur Schmunk.
1:00 p.m.—Phoebe Circle in Educational Unit.
4:00 p.m.—Ruth Circle in Social Center.

OUR SAVIOR LUTHERAN CHURCH
Rebekah Hall, 1194 M-52
The Rev. William H. Keller, Pastor
Sunday, May 16—
9:15 a.m.—Sunday school and Youth Bible Class.
10:30 a.m.—Worship Service.
Every Thursday—
6:30 p.m.—Youth Confirmation Class.

CHURCH OF CHRIST
13661 Old US-12, East
R. D. Parnell, Minister
Every Sunday—
10:00 a.m.—Church school.
11:00 a.m.—Worship service.
6:00 p.m.—Worship service.
Every Wednesday—
7:30 p.m.—Bible Study.

FIRST UNITED METHODIST CHURCH OF WATERLOO
Parks and Territorial Rds.
Mrs. Altha Barnes, Pastor
Every Sunday—
9:15 a.m.—Morning worship.
10:15 a.m.—Sunday school.

ST. JOHN'S EVANGELICAL AND REFORMED CHURCH
(United Church of Christ)
Francisco
The Rev. Robert Townley
Every Sunday—
10:00 a.m.—Worship service.
10:20 a.m.—Sunday school.

FIRST ASSEMBLY OF GOD CHURCH
The Rev. Thode B. Thodeson, Pastor
Every Sunday—
9:45 a.m.—Sunday school.
11:00 a.m.—Worship service.
7:00 p.m.—Evangelistic service.
Every Wednesday—
7:00 p.m.—Midweek services.

VILLAGE UNITED METHODIST CHURCH OF WATERLOO
8117 Washington St.
Mrs. Altha Barnes, pastor
Every Sunday—
10:00 a.m.—Sunday school.
11:15 a.m.—Morning worship.

ST. JOHN'S EVANGELICAL AND REFORMED CHURCH
(United Church of Christ)
Rogers Corners
The Rev. David J. Kleis
Every Sunday—
9:30 a.m.—Sunday school.
10:30 a.m.—Morning worship.

NORTH SHARON COMMUNITY BIBLE CHURCH
Sylvan and Washburn Rds.
The Rev. William Ensen, Pastor
Every Sunday—
10:00 a.m.—Sunday school.
11:00 a.m.—Worship service.
6:30 p.m.—Young People's service.
Every Wednesday—
7:30 p.m.—Prayer meeting.

ST. PAUL UNITED CHURCH OF CHRIST
The Rev. Warner Siebert, Pastor
Thursday, May 13—
9:00 a.m.—Koinonia Study Group.
3:30 p.m.—Ann Arbor Jackson Association Executive Board.
Saturday, May 15—
9:00 a.m. to 2:00 p.m.—Junior High field trip.
Sunday, May 16—
9:15 a.m.—Church school.
10:30 a.m.—Worship service.
Sermon title: "Can You Be A Christian Without Going to Church?"
4:00 p.m.—High School Madrigal Choir concert.
Monday, May 17—
7:30 p.m.—Teacher's meeting.
Tuesday, May 18—
1:00 p.m.—Needle & Thread.
7:30 p.m.—Council.
Wednesday, May 19—
11:00 p.m.—World Wide.
7:15 p.m.—High School Choir.
8:15 p.m.—Chancel Choir.
Thursday, May 20—
7:30 p.m.—Long Range Planning Committee.

ST. BARNABAS EPISCOPAL CHURCH
20500 Old US-12
The Rev. C. Walton Fitch, Vicar
Telephone 426-8815
Every Sunday—
9:15 a.m.—Holy Communion, first, third, and fifth Sundays.
9:15 a.m.—Morning Prayer, second and fourth Sundays.

Evangelist Shuler Will Speak at Immanuel Church

Dr. Phil Shuler will conduct an eight-day revival campaign at Immanuel Bible church, 145 E. Summit St., beginning Sunday evening at 7 o'clock. Dr. Shuler is considered one of the nation's finest ministers of this type, and has worked in this field for more than 20 years.
The son of Dr. Bob Shuler of Los Angeles, Calif., pastor of one of the largest Methodist churches on the West Coast, Dr. Shuler has three brothers, who are also in the ministry.
Dr. Shuler has written and published more than 500 songs which are featured nightly in the services. Some songs, which were written one year ago, on his last visit to Chelsea, Dr. Shuler will sing at this year's series of meetings.
Week night services will start at 7:30 p.m. There will be special music and singing at all the services.

Religious Census Will Be Taken By North Sharon Church

A community religious census will be conducted by the North Sharon Bible church Sunday afternoon, May 16. Members of the church plan to inquire at the homes of those living in an area between Chelsea, Grass Lake, and Manchester.
Brief questions concerning the family's religious affiliation will be asked.

MAKE IT FUN

Make exercise fun by doing two things at once, suggests the Family Fitness Council. For example, watch television while going nowhere on a stationary bicycle or indoor jogger. Even talk on the telephone while improving circulation by "resting" with feet higher than head on a slant board.

Milk is our biggest single source of farm income, bringing Michigan farmers more than \$245 million in 1969.

ZION LUTHERAN CHURCH
Corner of Fletcher, Waters Rds.
(Rogers Corners)
The Rev. John R. Morris, Pastor
Saturday, May 15—
9:00 a.m. to 12:00 p.m.—Youth Instruction Classes.
Sunday, May 16—
10:15 a.m.—Worship service.
9:00 a.m.—Sunday school.
Monday, May 17—
7:15 p.m.—Junior Choir.
8:00 p.m.—Senior Choir.
Wednesday, May 19—
8:00 p.m.—Planning Committee.

CONGREGATIONAL CHURCH
(United Church of Christ)
The Rev. Daniel Kellin, Pastor
Every Sunday—
10:00 a.m.—Church school.
10:00 a.m.—Morning worship.
ST. MARY CATHOLIC CHURCH
The Rev. F. Francis Wahowiak
Every Saturday—
7:30 p.m.—Mass.
Every Sunday—
Masses at 6:30 a.m., 8:00 a.m., 10:00 a.m., and 11:30 a.m.

ST. THOMAS EVANGELICAL LUTHERAN
The Rev. Daniel L. Mattson, Pastor
Every Sunday—
10:00 a.m.—Worship service.
11:00 a.m.—Sunday school and bible study.

CHELSEA BAPTIST CHURCH
337 Wilkinson
The Rev. James Stacey, Pastor
Every Sunday—
10:00 a.m.—Sunday school.
11:00 a.m.—Worship service.
Nursery care available during all services.
6:00 p.m.—Junior and Senior Baptist Youth Fellowship.
7:00 p.m.—Evening worship.
Every Wednesday—
7:30 p.m.—Bible study and prayer meeting.

BETHEL EVANGELICAL AND REFORMED CHURCH
(United Church of Christ)
Freedom Township
The Rev. Roman A. Reineck
Every Sunday—
10:00 a.m.—Worship.
10:00 a.m.—Sunday school.

GREGORY BAPTIST CHURCH
The Rev. Grant Lapham, Pastor
Every Sunday—
10:00 a.m.—Worship service.
11:15 a.m.—Church school.
6:30 p.m.—Baptist Youth Fellowship.
7:30 p.m.—Evening worship service.

FIRST UNITED PRESBYTERIAN CHURCH
Unadilla
The Rev. T. H. Liang
Every Sunday—
9:45 a.m.—Sunday school.
11:00 a.m.—Worship service.
Every Tuesday—
8:00 p.m.—Choir practice.

CHELSEA MEDICAL CENTER
Every Wednesday—
11:30 p.m.—Worship service.

FIRST CHURCH OF CHRIST, SCIENTIST
1883 Washtenaw Ave., Ann Arbor
Sunday, May 16—
10:30 a.m.—Sunday school.
10:30 a.m.—Morning service.
Lesson sermon: "Mortals and Immortals."

ST. JACOB EVANGELICAL LUTHERAN CHURCH
12501 Riethmiller Rd., Grass Lake
The Rev. Andrew Bloom, Pastor
Every Sunday—
9:00 a.m.—Sunday school.
10:15 a.m.—Divine services.

NORTH LAKE UNITED METHODIST CHURCH
Every Sunday—
9:30 a.m.—Worship service.
10:30 a.m.—Sunday school.

IMMANUEL BIBLE CHURCH
145 E. Summit St.
The Rev. Frank C. Frinkle
Every Sunday—
9:45 a.m.—Sunday school, nursery provided.
11:00 a.m.—Morning worship, nursery provided.
7:00 p.m.—Evening service.
Every Wednesday—
Family hour, prayer meeting and Bible study.

METHODIST HOME CHAPEL
The Rev. R. L. Clemans, Chaplain
Every Sunday—
8:45 a.m.—Worship service.

SALEM GROVE UNITED METHODIST CHURCH
Every Sunday—
10:00 a.m.—Sunday school.
11:00 a.m.—Worship service.

Michigan's Upper Peninsula is as big as Connecticut, Delaware, Massachusetts and Rhode Island combined.

HAV-A-ELECTRIC
LICENSED ELECTRICAL CONTRACTOR
Re-Wiring and New Work
Farm Wiring

BUILDERS: We Need Work.
Call 475-7357



RICHARD EGELER

JA Officer Given Expense Paid Trip To National Meet

Richard Egeler, a junior at Chelsea High school, has been awarded an all-expense paid trip to attend the National annual Junior Achievement Conference at the University of Indiana, Aug. 15 through 20. The award was presented by Chrysler Corp., in recognition of his accomplishment as vice-president of manufacturing for "Demaco," a Chelsea Junior Achievement group sponsored by Chrysler.

Richard was presented with his award Tuesday, May 4, at the final meeting of the year of his Junior Achievement group. W. W. Griffith, and J. R. Van Orsdol, who acted as advisors for the group, made the presentation.

LIVING- AS YOU LIKE IT

...and get more from the GOOD YEARS



A Southerner who says his group isn't officially organized, and doesn't want publicity, suggests there might be merit in a general "swap" club for the retired. He's talking about the swapping of talent, services and advice among hobbyists.

The group, he says, has frequent meetings at the local coffee shop. Someone building a barbecue pit, or patching a concrete wall for example can receive advice, on - the - job - supervision, and sometimes a little help, merely by presenting his plans to the "board."

Included in the group of retirees are such varied occupations as bricklayers, carpenters, architect, plumber, painter, etc., as well as a smattering of allied occupations. Someone with an idea may find someone else has a complete set of plans or has had experience with a similar project. One person may be familiar with the type of materials needed for such a job and know where such may be acquired. If more than one type of skill is needed for the job, there is sometimes a swapping of services—"you help me with yours."

Many plans and ideas, of course, never get past the talking stage. "But," writes our correspondent, "there is often as much enjoyment talking about how a job could be done, or should be done, as there is in the actual doing. When someone says, 'I

have an idea to present to the Board," we all perk up our ears. You can be real sure his idea is going to get a thorough going over before someone is able to change the subject."

We must agree, the mutual aid program sounds like a good thing. We're also pretty sure only good times are had at the coffee "board" sessions.

Instruction Slated for Prospective Methodist Home Teen Volunteers

Chelsea Methodist Home is once more starting a summer volunteer program for youths of the community who are 14 years old, or older. Volunteers at the Home will read, play games, and visit with the residents, and take them for many walks.

A one-day school for prospective volunteers will be held in Ann Arbor on May 22, which is sponsored by the American Red Cross.

More than 40 young people worked as volunteers at the Methodist Home last year, aiding the residents. Those who wish to volunteer to work this year are urged to phone Mrs. Ruth Blecha, 475-7637, or Mrs. Evelyn Pannone, 475-8633.

Michigan has a greater variety of minerals—metallic and non-metallic—than any area of comparable size in the world.

SUNDAY'S SERMON

★ If You Doubt

If you doubt God, go off to your self, sit and do nothing. Search the sky for something to believe in. Ponder the blue, the cloud patterns, the first shining star that appears in view.

If you doubt God, smell the magic of springtime in the air. See the buds and the new-green leaves, the wonder of now-growing things.

Consider the animals of the forest and the birds of the sky, the streams, rivers and the seas.

Measure the height to which you may reach and compare it to the circumference of the earth. Think of the distance from the earth to the moon—and to the galaxies beyond.

With the magnitude of the universe fixed strongly in your mind, relate. You are but one small speck upon the face of a relatively small planet. But size is not the important thing. What counts is that you are blessed with humanity, you have the power of reason, you have conscience, you have a soul.

Ask yourself from whence these blessings came.

Two thousand Michigan firms engage in world trade.

MEET EVANGELIST

PHIL SHULER

at
IMMANUEL BIBLE CHURCH

145 E. Summit St.
Chelsea

MAY 16-23

Beginning
Sunday Night, 7 p.m.
Weeknights, 7:30 p.m.

PLEASING MUSIC - POWERFUL MESSAGES



What makes our Fury automatic transmission better than any other automatic transmission?

It's free.

Buy any specially-equipped Plymouth Fury V-8 and we can offer you the automatic transmission free.

Chrysler-Plymouth puts a lot of care into the building and engineering of their cars. And when you've got a good product, you go out of your way to get people to buy it.

They're doing that by not charging us for automatic transmissions on specially-equipped Furies. So we can now offer you an automatic transmission free.

Specially equipped? That means ordering your Fury V-8 with the optional equipment you'd probably order anyway:

Power steering, power disc brakes, Chrysler Airtemp air conditioning, AM radio, vinyl roof, white sidealls and other specified items.

It's like shaving \$216.40* off the price.

When you can cut the equivalent of \$216.40 off the sticker price of a sleek, roomy Fury V-8, you've got a great deal going for you.

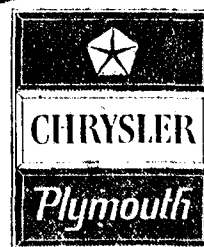
Act now. See us.

*Based on manufacturer's suggested Retail Price for TorqueFlite automatic transmission with standard V-8 engine.

AUTHORIZED DEALERS  CHRYSLER MOTORS CORPORATION

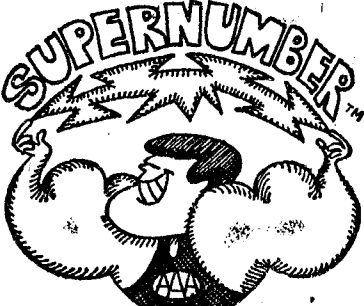


Fury Gran Coupe



Coming Through with more car, and more kinds of cars, within your price.

GOSH!
GET A ROOM IN
A FLASH!
FREE! FROM



800-336-0336

*In Virginia call: 800-552-0388

SUPERNUMBER to the rescue. Make toll-free room reservations in one fell swoop. Pick a hotel-motel with the symbol from your trusty AAA Tour Book. Then call SUPERNUMBER and say you're a faithful AAA member. And ZAPI! The nice person on the other end will make your reservations anywhere in the U.S.

 RESERVATIONS

RAY JOHNSTON

Phone 769-5000

1200 S. Main St.

Ann Arbor, Mich.

G. A. SALES & SERVICE • 1185 Manchester Road

WASHTENAW COUNTY PARK RULES

The Chelsea Standard, Thursday, May 13, 1971 13

County Planning Commission Tables Action on Park Plans

Members of the Mill Creek Research Council turned out in large numbers Wednesday evening for the meeting of the Washtenaw County Planning Commission. Approximately 30 persons attended the session, at which time it had been thought the Commission would come to some kind of decision regarding the proposed Huron-Clinton Metropolitan Authority park on Mill Creek, in Lima and parts of Freedom townships.

Following a brief presentation by Dave Bacon, chairman of the Research Council, however, it was moved by Jay Bradbury, and seconded by David R. Byrd, that the Planning Commission table making any recommendation concerning the proposed park until more questions concerning its effect are answered.

In his address to the Planning Commission, Bacon presented a statement which the MCRC adopted at their annual meeting in March of this year. That statement asserted that the greatest need for parks is in Wayne county, and that parks in Wayne county or close to the county must therefore be emphasized by HCMA in their planning. Washtenaw county needs smaller, more local parks, he maintained, within bike riding range of the cities and towns. If and when a large park is needed, it should be built on state owned public land in Pinckney or Waterloo Recreation Areas.

Bacon further added that he MCRC proposed that Washtenaw county support Senate Bill No. 4269, which provides for a millage increase for the Huron-Clinton Metropolitan Authority. He added that this should be done provided that a referendum to determine on a county-by-county basis to remain under Huron-Clinton Metropolitan Authority be required before the millage is approved. The Council further felt that if a millage increase were approved by the voters, the increased revenue should be used exclusively for Belle Isle Park Development.

He concluded his remarks by adding that the Research Council suggested the Planning Commission make no recommendation on the park until the Brater study of the effect of the impoundment on upstream drainage is complete, and the effect of the impoundment and park on downstream quality and water quantity is evaluated, along with the effect of flat topography on the impoundment itself. He felt that a planning study should be done to determine the

Fluoride Program Has Openings for More Children

Chelsea's Fluoride Program will be held at the high school cafeteria from June 14 through 24, Mrs. Gary Albrecht announced this week. There are still openings available, and parents who wish to enroll their children may contact Mrs. Albrecht at 475-7465. Pre-schoolers, kindergartners, 2nd and 5th graders who have not been drinking fluoridated water for the past three years and all 8th graders are eligible for this program. Eighth grade students are particularly encouraged to enroll, as this may possibly be the last opportunity for their teeth to benefit from the effects of fluoride.

To stimulate interest in fluoridation and good dental care, a poster contest is taking place, under the direction of George Parker, art teacher at the Junior High school. The contest is open to all 8th graders. First- and second-place winners will receive awards from the Chelsea Kiwanis Club, who are sponsors of the fluoride program. Ten of the best posters will be displayed in store windows throughout town.

LAST DAY OF REGISTRATION School Election

Notice of the Last Day of Registration
of the Qualified Electors of

Chelsea School District

WASHTENAW and JACKSON COUNTIES, MICHIGAN

TO THE QUALIFIED ELECTORS
OF SAID SCHOOL DISTRICT:

Please Take Notice that the Annual Election of said School District will be held on

Monday, June 14, 1971

The last day on which persons may register with the appropriate Township Clerks, in order to be eligible to vote at the Annual School Election called to be held on Monday, June 14, 1971, is

FRIDAY, MAY 14, 1971

Persons registering after 5:00 o'clock p.m., on the said Friday, May 14, 1971, are not eligible to vote at said said Annual School Election.

Persons planning to register with the respective township clerks must ascertain the days and hours on which the clerks' offices are open for registration.

The proposed Twenty-Sixth Constitutional Amendment to the United States Constitution reads in part as follows:

"Section 1. The right of citizens of the United States, who are 18 years of age or older, to vote shall not be denied or abridged by the United States or by any state on account of age."

Upon ratification of the proposed Constitutional Amendment by the 38th State, all residents of the school district who are registered with their respective city or township clerks and are 18 years of age or older shall be afforded the right to vote.

This Notice is given by order of the Board of Education.

HERMAN L. KOENN
Secretary, Board of Education.

Dated: May 3, 1971.

Pursuant to Act 261 of the Public Acts of the State of Michigan of 1965, as amended, the Board of County Park Trustees of Washtenaw County herewith promulgates and publishes the following rules for the use, protection, regulation and control of all of its services, facilities and park, recreation, conservation, education, historic, and scenic areas and preserves and parkways.

SECTION I—DEFINITIONS

- "Board" shall mean the Board of County Park Trustees of Washtenaw County or its chairman.
- "Board's property" shall mean all lands, waters and property administered by or under the jurisdiction of the Board of Park Trustees of Washtenaw County.
- "Person" or "persons" shall mean individuals, male or female, singular or plural; firms, corporations or any group or gathering of individuals.
- "Camping" means the overnight lodging or sleeping of persons on the ground or in any other manner, or in any sleeping bag, tent, trailer-tent, trailer coach, vehicle camper, motor vehicle, boat or in any other conveyance erected, parked or placed on the premises or waters within any park or recreation area administered by the Board of Park Trustees of Washtenaw County.
- "Rules" shall mean the rules adopted by the Board of Park Trustees of Washtenaw County applicable to all property administered by or under the jurisdiction of the said Board and all amendments thereto.

SECTION II—HOURS

No person shall remain upon property administered by or under the jurisdiction of the Board between 10:00 p.m. and 5:00 a.m. Provided, however, that upon application to the Board or its authorized agent said hours may be extended. It shall be unlawful for any person to enter upon any portion of parklands or waters which have been designated as closed to public use or entry.

SECTION III—DESTRUCTION OF BUILDINGS, MARKERS, MOUNMENTS AND OTHER PROPERTIES

No person shall, upon the property of the Board:

- Willfully destroy, deface, alter, change or remove any monument, stone marker, bench mark, stake, post or blaze, marking or designating any boundary line, survey line, or reference point.
- Cut, break, mark upon or otherwise injure any building, equipment, bridge, drain, wall, fountain, lamp post, fence, gate, hedge or other structure.
- Deface, destroy, or remove any placard, notice or sign, whether permanent or temporary, posted or exhibited within or upon park property.
- Appropriate, excavate, injure or destroy any historical or pre-historical ruin or any object of antiquity, without permission of the Board.

SECTION IV—DESTRUCTION OF PLANT LIFE AND NATURAL SURROUNDINGS

No person shall, upon the property of the Board:

- Cut, remove, or destroy any tree, sapling, seedling, bush or shrub, whether alive or dead, or chip, blaze, box, girdle, trim or otherwise deface or injure any tree or shrub, or break or remove any branch, foliage, flower or any tree or shrub, or pick, gather, uproot, remove or destroy any flower, plant or grass.
- Remove or cause to be removed any sod, earth, humus, peat, boulders, gravel or sand, without written permission of the Board.

SECTION V—FIRES

- No person shall willfully set or cause to be set on fire any tree, woodland, brushland, grassland or meadow within or upon the property of the Board.
- No person shall build any fire upon Board property except within the fireplaces, receptacles or picnic areas approved and designated by the Board for such purpose.
- No person shall drop, throw, or otherwise scatter lighted matches, burning cigars, cigarettes, tobacco paper or other inflammable material within or upon any property of the Board.

SECTION VI—ANIMALS AND BIRDS

No person shall hunt, trap, catch, wound or kill or treat cruelly, attempt to trap, catch, wound or kill any bird or animal, molest or rob any nest of any bird or any lair, den or burrow of any animal in or upon any land or waters administered by or under the jurisdiction of the Board. Provided, however, fishing will be permitted within or upon Board property in accordance with the laws of the State of Michigan and the rules of the Department of Natural Resources of the State of Michigan in such areas designated for such purposes.

SECTION VII—CONTRABAND

All game animals, fowl, birds, fish and other aquatic life, hunted, killed, taken or destroyed, bought, sold, bartered or had in possession, contrary to any of the provisions hereof, shall be and the same are declared to be contraband and the same shall be subject to seizure and confiscation and shall be turned over to the Michigan Department of Natural Resources for disposal. Provided further, that any weapon or object carried or used by any person in violation of these rules, shall be subject to seizure by the Board or its agents and disposed of according to law.

SECTION VIII—SWIMMING, BATHING AND WADING

No person shall:

- Swim, bathe, or wade in any of the watercourses, lakes, ponds or sloughs located within or upon the properties administered by or under the jurisdiction of the Board except at such times and places as may be provided or designated for such purpose.
- Carry or consume any food or beverage of any kind, nor have in their possession any glass or metal container on any beach or in the water adjacent thereto.

SECTION IX—BOATING

No person shall bring into, use or navigate any boat, yacht, canoe, raft or other watercraft upon any watercourse, lagoon, lake, pond or slough located within or upon the properties administered by or under the jurisdiction of the Board, except at such time or places as may be provided or designated for such purpose. All watercraft shall comply with and be used in compliance with Public Act 303 of the Public Acts of the State of Michigan, of 1967 as amended and such regulations as may be adopted under the authority of the act.

SECTION X—CAMPING

There shall be no camping in any parks or other property under the management, supervision or control of the Board.

SECTION XI—PARKING IN PROHIBITED AREAS

Standing for loading or unloading in certain places:

- It shall be unlawful for the operator of a vehicle to stop, stand or park said vehicle in any place marked as a passenger or loading zone, other than for the expeditious loading or unloading of passengers, or for the unloading and delivery or pick up and loading of materials.
- It shall be unlawful for the operator of a vehicle to stop, stand or park such vehicle upon any roadway or in any parking area in such manner as to form an obstruction to traffic thereon.

SECTION XII—HORSES

- It shall be unlawful for any person to ride, lead or cause or suffer a horse to be upon any property administered by or under the jurisdiction of the Board.

SECTION XIII—MOTOR-DRIVEN VEHICLES

It shall be unlawful for any person to:

- Operate a motor-driven vehicle of any kind or nature except on roads or designated parking areas.
- Operate a motor-driven vehicle on any park road at a speed exceeding 15 miles per hour or at any speed greater than that posted.
- Operate any motor-driven sled, toboggan or snowmobile, or any other motor-driven sport vehicle on any property under the management, supervision or control of the Board, except where permitted by posted notice.

SECTION XIV—OPERATION OF BICYCLES

- Bicycles shall be operated as closely to the right-hand curb or right-hand side of the path, trail or roadway as conditions will permit and not more than two bicycles shall be operated abreast.
- It shall be unlawful for the operator of any bicycle upon any path, trail or roadway to carry any person upon the handlebar or frame of any bicycle, or for any person to so ride upon such bicycle.
- Bicycles may be operated upon such paths, trails, or roadways as may be posted allowing such use; provided, however, no such use shall be allowed between sunset and sunrise.

SECTION XV—LIVESTOCK

No person shall drive or cause to be driven any horses, cattle, sheep, goats, swine, or other livestock upon or across any property administered by or under the jurisdiction of the Board without the written permission of the Board.

SECTION XVI—PEDDLING AND SOLICITING

It shall be unlawful for any person to peddle or solicit business of any nature whatever, or to distribute handbills, or other advertising matter to post unauthorized signs on any lands, waters, structures, or property administered by or under the jurisdiction of the Board, or to use such lands, waters, structures or property unless first authorized in writing by the Board or its authorized agent.

SECTION XVII—UNLAWFUL OBSTRUCTION

No person, firm or corporation shall by force, threats, intimidations, unlawful fencing, enclosing, or by any other means, prevent or obstruct any person from entering, leaving or making full use of any property administered by or under the jurisdiction of the Board.

SECTION XVIII—HINDERING EMPLOYEES

No person shall interfere with, or in any manner hinder any employee or agent of the Board while performing his official duties.

SECTION XIX—RESISTING PARK EMPLOYEES

No person shall interfere with any park employee in the discharge of his duties; or fail or refuse to obey any lawful command of any park employee.

SECTION XX—PERSONAL CONDUCT

- It shall be unlawful for any person to be under the influence of intoxicants, or to engage in any violent, abusive, loud, boisterous, vulgar, lewd, wanton, obscene or otherwise disorderly conduct tending to create a breach of the peace, or to disturb or annoy others, while in or on any property administered by or under the jurisdiction of the Board.
- It shall be unlawful to conduct or to participate in any form of gambling lottery or game of chance upon park property.

SECTION XXI—USE OF LOUDSPEAKER

It shall be unlawful to use a loudspeaker, public address system or amplifier within or upon Board property without a written permit issued by the Board.

SECTION XXII—FIREWORKS

No person shall fire, discharge or have in his or her possession any rocket, firecracker, torpedo, squib, or other fireworks or any substance of an explosive nature within or upon the property of the Board.

SECTION XXIII—FIREARMS

No person shall at any time bring into or upon the properties of the Board, nor have in their possession, nor discharge, or set off anywhere upon said properties, a revolver, pistol, shotgun, rifle, air rifle, air gun, water gun or any gun, rifle, firearm or bow or other weapon that discharges projectiles either by air, explosive substance or any other force. Provided, however, that this section shall not apply to any deputy sheriff, police officer, peace officer, or other duly appointed law enforcement officer while carrying out the duties and responsibilities of their position.

SECTION XXIV—LITTERING AND POLLUTION OF WATERS

It shall be unlawful:

- To discard, to deposit refuse of any kind or nature in or upon the property of the Board except by placing said refuse in containers provided for such purpose.
- No refuse, garbage, or other noxious materials from areas outside of park areas will be placed in refuse containers provided for park use.
- To throw, cast, lay, drop or discharge into or leave in waters administered by or under the jurisdiction of the Board, any substance, matter or thing, liquid or solid, which may or shall result in the pollution of said waters.

SECTION XXV—SKATING AND COASTING

- No person shall skate, sled, walk or go upon any ice, or snowshoe, or ski except at such times and upon such places as may be designated or maintained therefore.
- No person shall within or upon Board property coast with hand sleds, bobs, carts, or other vehicles on wheels or runners except at such times and upon such places as may be designated or maintained therefore.

SECTION XXVI—BALLOONS, AEROPLANES AND PARACHUTES

No person shall exhibit any machine or show, or any animal, or indulge in any acrobatic exhibitions in or upon any property of the Board nor shall any person carry on any performance or do anything whatsoever, which shall cause persons to congregate so as to interfere with the proper use of such property by the general public or to obstruct the passage of vehicles or persons, without first having obtained written permission from the Board.

SECTION XXVII—ANIMALS AND BIRDS

It shall be unlawful for any persons while on Board property to:

- Cause any animal or fowl to run at large;
- Bring, drive, lead or carry any dog or other animal or pet which is unleashed, or upon a leash more than six feet in length, under immediate control of a competent person;
- Suffer his dog or pet to enter any public building or to be upon any designated beach, except a trained and working leader dog;
- Cause or permit any horse or other animal to stand on any Board property unless securely hitched or in charge of some competent person;
- Torture, ill-treat or neglect any animal or fowl.

SECTION XXIX—SPECIAL PERMITS

- No erection, construction or maintenance shall be made above or below ground, across or beneath the property of the Board by any person, firm or corporation without first having obtained written permission from the Board authorizing such installation or construction and a permit specifying in detail the work to be done and the conditions to be fulfilled pursuant to the terms of such approval.
- Notwithstanding any of the provisions hereof, the Board or its agents may, upon written application grant specific use permits for special uses when in the opinion of the Board or its agents special consideration is warranted.

SECTION XXX—EMERGENCY POWERS

Nothing in these rules shall:

- Prohibit or hinder any duly authorized agents of the Board or any peace officers from performing their official duties.
- Prohibit the Board, director, or park manager from establishing emergency rules required to protect the health, welfare and safety of park visitors and to protect park property, and to maintain order.

SECTION XXXI—FINES AND IMPRISONMENT

Any person violating any provision of the foregoing rules shall be deemed guilty of a misdemeanor and upon conviction thereof shall be fined not more than \$100.00 and costs of prosecution, or imprisoned in the county jail for a period not exceeding 90 days or both, for each offense.

APPROVED BY
WASHTENAW COUNTY BOARD OF COMMISSIONERS
APRIL 29, 1971

APPROVED BY
WASHTENAW COUNTY PARK TRUSTEES
MAY 4, 1971



UP, UP AND OVER: Bulldog Tim Lancaster was first-place winner in the pole vaulting event at Tuesday evening's track meet against Dexter. Lancaster took top honors with a leap of 11' 6". Chelsea won the meet, 72-46, to take first-place standings in the dual meet portion of the conference title race.

FFA Banquet Set for May 14

Future Farmers of America will hold their annual banquet Friday, May 14. Officers for the coming 1971-72 year will be installed. They are: Marty Straub, president; Ted Hinderer, vice-president; Dan Gaunt, secretary; Neil Bollinger, treasurer; Stephen Straub, reporter; and Ken Schiller, sentinel.

Honorary Chapter Farmer Degree will be given to Don McCormick, who was temporary agriculture teacher for Chelsea this past year.

Awards earned by members will also be presented at the banquet. Morley Durston, partner of Lake & Howell Asphalt Paving will narrate films of his recent African safari.

Members, parents and associates of the FFA will attend the banquet which begins at 7:45 p.m.

Baseball Team Wins

Chelsea's varsity baseball team defeated Novi Tuesday afternoon, at home field, by a score of 6-2. Details of the game were not available at press time.

Michigan labor is highly productive, ranking first in value added in manufacturing per employee and second in value added in manufacturing per production worker.

Good Pitching Helps Bulldogs Down Dundee

Strong pitching by Tim Van Slambrouck, and the timely hitting of Wayne Welton helped Chelsea baseball players defeat Dundee, 6-2, Thursday afternoon, May 6, at the home field.

After Dundee opened the scoring in the first inning with one run, Chelsea came back in the bottom of the second inning, and scored on a single by Wayne Welton, a sacrifice by Joe Aspranti, and a single by Dave Lukasiak to tie the ballgame, 1-1.

Dundee scored again in the third inning on two hits, and Chelsea again tied the game in the third inning as Joe Aspranti singled home Wayne Welton, who had tripled earlier.

Chelsea put the game away in the fifth inning when Randy Brier's single scored John Mann. After a fielder's choice by Todd Sprague, and a single by Ron Sweeny, Wayne Welton unloaded his second triple, scoring both Sprague and Sweeny. Score was then 5 to 2.

Final run came in the sixth inning following an error, a single and a sacrifice.

Pitcher for Dundee was Jeff Toburen, and catcher was Mike Price. Tim Van Slambrouck pitched for Chelsea, and Randy Brier was catcher. All of Dundee's hitting was by the first four men in their batting order, with the first, third and fourth batters tallying two hits each.

Jr. High Track Team Roars By Tecumseh

Chelsea's Junior High track team came from behind on record smashing performances Thursday afternoon May 6 to down Tecumseh 59-50.

After a slow start, the Bulldogs came from behind training 23-13 after the field events to take the winning position in the meet.

Howard Salyer won the high hurdles with a time of :9.5 followed by Don Bollinger in third place.

In the 60-yard dash event Ishmael Picklesimer placed second tying a school record of :6.9 seconds while Ron Collins placed third.

Winner of the 75-yard dash was Karl Gauss as he took first place in a school record time of :8.4 seconds. Robin Boyer followed Gauss in third place.

In the 440-yard run Mike Agopian made up for a short lay-off by ripping off a :58.6 quarter to set another school record.

Most dramatic race of the day proved to be the 100-yard dash where Picklesimer avenged his earlier defeat in the 60 by winning in a time of :11.0 seconds.

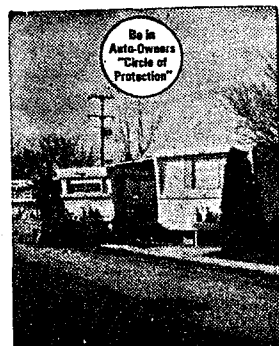
Karl Gauss set a second school mark in the 220-yard dash winning in :24.5 followed in third place by teammate Dan Schaefer.

Final two relays of the day determined the meet results for Chelsea as the team took first place in the 880-yard relay and the 440-yard relay. Winning 880 team-mates were Mike Piatt, Paul Wood, Robin Boyer, and Dave Murphy, while the 440-yard runners were Curt Winans, Ron Collins, Howard Salyer and Don Bollinger.

Don Pierson's vault of 9' 9" was the one bright spot for Chelsea in the field events. Don Bollinger was in third place with a vault of 8'.

Other field event results were: Picklesimer second in the shot put, Collins second in the long jump and Rick Sweeny third in the high jump.

Michigan was the first state to establish roadside picnic tables.



If something happens to your Mobile Home you'll be protected with

Auto-Owners Mobile Home Insurance
See Your A-O Man

A. D. MAYER AGENCY, INC.

"Your Protection Is Our Business"
115 Park St. Chelsea
Phone 479-5061

Auto-Owners Insurance
Life • Casualty • Fire • Auto

Scouts Collect Waste Paper In Annual Drive

Boy Scout Troop 475 and Cub Scout Pack 455 held their annual paper and magazine drive Wednesday May 5 through Saturday, May 8. Boys from Troop 475 who helped were Tom Hepburn, Robert Heydlauff, Donald Oesterle, Robert Burgess, Robert Liebeck, Donald Hall, Larry Hafner, Tony Hafner, Mike Stoner, Roger Policht, Mike Schanz, Steve Schanz, Steve Worden, Dennis Cosgrove, Bill Kalmbach, Dore Kalmbach and Lee Hafner.

Cubs from Pack 455 who participated included Jon Oesterle, Dave Hall, Dave Baldwin, Billy Burgess, Leon Wheeler, Dave Wal-dyke, Mike Wadyke, Pat Murphy, Bill Maynard, Dean Schneider, Jeff Boyer, Perry Fletcher, Steve Dresch, Steve Blaess, and Brian Lewis.

Adults who assisted from the troop were Charles Stoner, William Hafner, Lloyd Hafner, Charles Hafner, Vern Hilt, Richard Kalmbach, Robert Roy, Mary El-

len Stoner, Elaine Hafner, and Jean Heydlauff. Adults from Cub Scout Pack 455 were May Ann Burgess, Otis Titus, Duane Hall, Don Baldwin, Mike Steele, and Bob Steele, Jr. Summer Oesterle, Ralph Fletcher, and Robert Daniels contributed the use of their trucks for the boys on the drive.

Michigan has more than 11,000 inland lakes and more than 36,000 miles of streams.

Youth Abducted in Robbery

A 19-year-old Webster township boy was kidnapped from the service station he was attending in Ann Arbor early Monday morning, and forced to accompany three men who later released him unharmed on a Detroit expressway. Michael Litzinger of 6465 W. Territorial Rd., was robbed at the Lawhorn Service on S. State Rd. near I-94 in Pittsfield township and taken by the robbers to Detroit.

About \$200 in cash was taken from the station by the bandits, and during Litzinger's absence \$1.18 in gasoline and three women's wigs were stolen from the station office. Sheriff's officers theorized the bandits decided to take Litzinger with them to prevent a prompt report of the robbery. Deputies said about three hours elapsed from the time of the robbery until Litzinger was released.

Magnavox 60th ANNIVERSARY CELEBRATION

See many Stereo Custom Component Systems and Portables, Radios, Tape Recorders, Monochrome TV... and magnificent Color TV—now anniversary priced!

A. 11" diagonal measure COLOR PORTABLE—model 6104 will bring you vivid 59 sq. in. pictures with such extra quality Magnavox features as Automatic Color Purifier and the exclusive Bonded Circuitry chassis with Keyed AGC for superior reception and lasting reliability. Perfect on tables, shelves or bookcases—anywhere!

Anniversary Priced NOW ONLY **\$229**

C. 18" diagonal measure COLOR PORTABLE—model 6272 makes an ideal second set! It offers Ultra-Bright 180 sq. in. pictures with fabulous realism—plus built-in Magnavox quality, performance and lasting reliability. Recessed carrying handle permits easy carrying or enjoy it on an optional cart for room-to-room mobility.

Anniversary Priced NOW ONLY **\$329**

B. 14" diagonal measure COLOR PORTABLE—with Automatic Fine Tuning! Model 6228 will bring you perfectly tuned brilliant color 102 sq. in. pictures—on every channel, every time! Its other advanced features include Chromatone for added picture depth and richer colors, Quick-On, plus many more for superior viewing enjoyment.

Anniversary Priced NOW ONLY **\$279**

D. 19" diagonal measure MOBILE COLOR TV—with Automatic Fine Tuning! Model 6280 will always remember to give you perfectly tuned Ultra-Rectangular, Ultra-Bright 185 sq. in. pictures instantly and automatically. It also has Chromatone for depth and richer colors, Quick-On, plus many more extra quality features. Its convenient cart affords wonderful mobility.

Anniversary Priced NOW ONLY **\$379**

Simulated TV Pictures

25" SCREEN

(diagonal measure)

TAC TOTAL AUTOMATIC COLOR TV

Now—Color TV with a built-in memory! TAC keeps flesh tones natural—pictures sharp—automatically! No jumping up to adjust controls—no green or purple faces! Switch channels... let the scene change—TAC always remembers to give you perfect pictures with the right colors! Contemporary model 7120 also offers you today's biggest picture—a huge 315 sq. in. And—its new Ultra-Rectangular, Ultra-Bright tube gives you more viewing area with clearer pictures and less glare... plus fabulous life-like realism! Chromatone for depth and richer colors plus Quick-On pictures and sound add to your enjoyment.

Anniversary Priced NOW ONLY **\$499**

HEYDLAUFF'S

113 North Main St., Chelsea (Formerly Frigid Products) Phone GR 9-6651

Metal Cabinets ON SALE



UTILITY CABINETS

20", 4-shelf Utility Cabinet. Reg. \$21.50	SALE \$18.98
24", 5-shelf Utility Cabinet. Reg. \$26.95	SALE \$24.50
30", 5-shelf Utility Cabinet. Reg. \$32.95	SALE \$29.50

WARDROBES

22", double door, walnut finish. Reg. \$21.50	SALE \$19.35
30", double door, walnut finish. Reg. \$28.50	SALE \$25.60
38", double door, walnut finish. Reg. \$35.00	SALE \$31.50
40", double door, walnut finish. Reg. \$39.50	SALE \$35.50

KITCHEN CABINET BASES

18", single drawer, single door. Reg. \$21.50	SALE \$19.35
24", single drawer, double door. Reg. \$29.50	SALE \$26.55
30", single drawer, double door. Reg. \$35.00	SALE \$31.50

MERKEL BROS.

Open Mon. & Fri. Until 9 Phone Chelsea 475-8621